



INSTALLATION INSTRUCTIONS

A diagram sheet has been provided to you at the time of installation. It gives you an aerial view of your building and the location of your openings as it exists on the various sides. Panels are numbered, and are referred to as such on your diagram.

PLEASE treat this diagram sheet as valuable property because you will need to refer back to it in time of emergency.

PREPARATORY STEPS

WARNING

Panel edges are sharp; **HEAVY DUTY GLOVES** must be used when handling panels.

Tools required are Phillip screwdriver or a (#3) tip driver with a battery operated drill (**Remember, do not use an electrically operated drill during periods of rain or if ground is wet, also by using it you may strip the head of the screw**).

Step 1. Remove panels from stack and place proper numbered panels at the correct opening as per your diagram sheet.

Step 2. Back out screws of opening until screws are approximately $\frac{1}{2}$ " - $\frac{3}{4}$ " out of wall.

Step 3. If diagram indicates angles and brake metal - install them first.

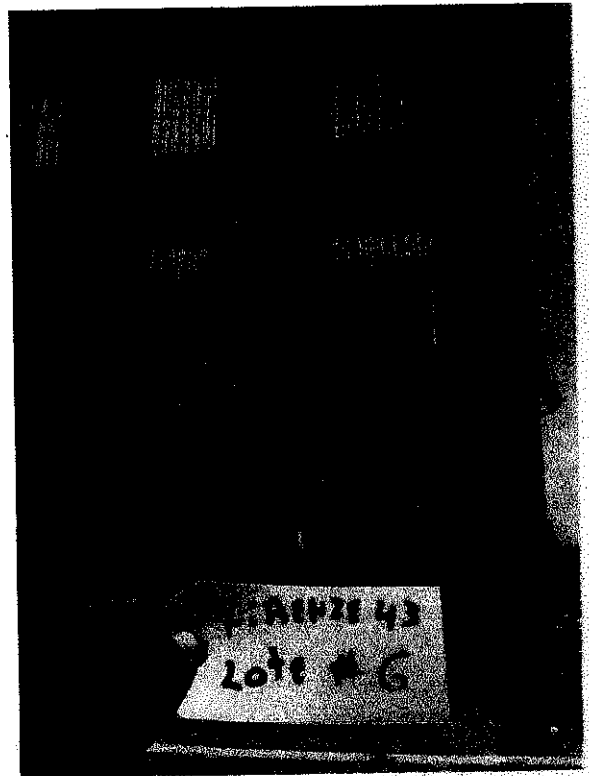
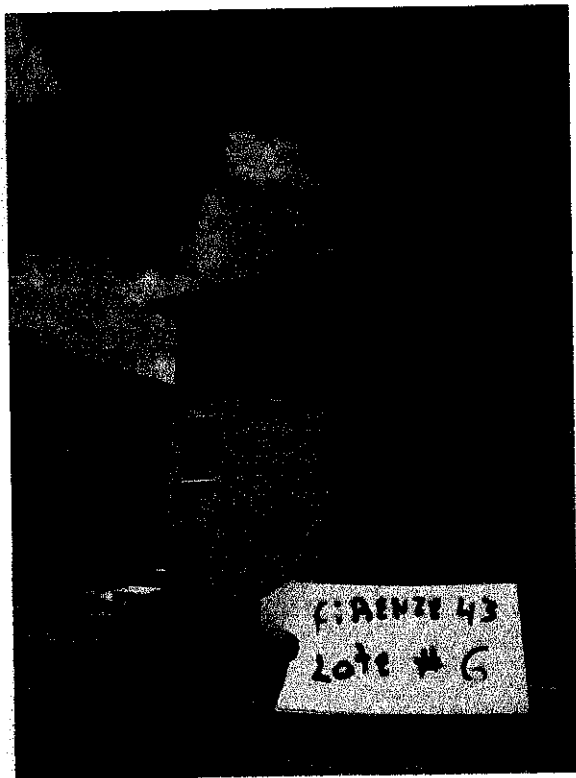
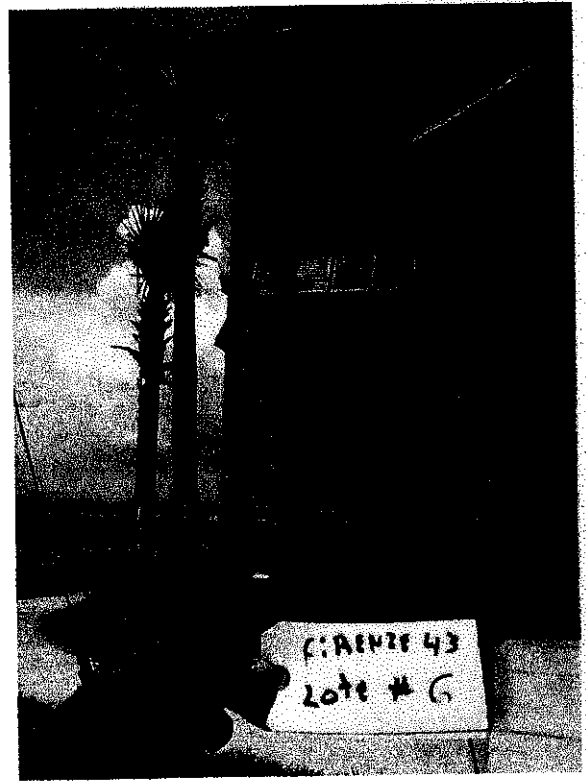
Step 4. Hook the panels on the bolts and run the bolts back in.

Step 5. Tighten all screws securely to prevent vibration from working them loose.

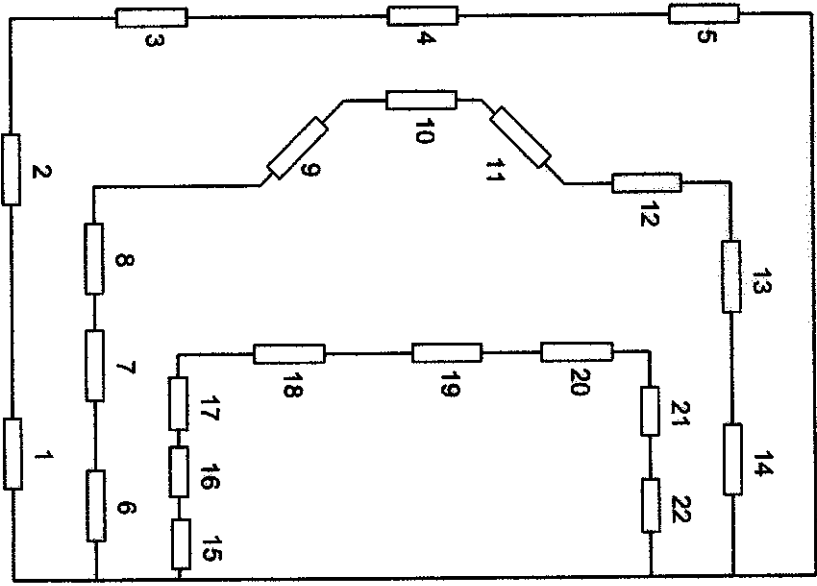
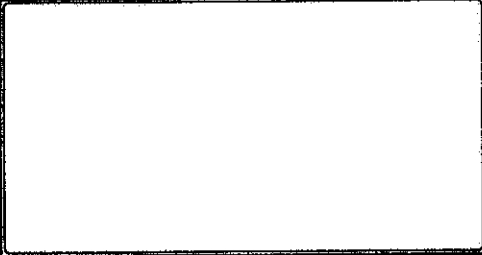
Step 6. Repeat the process until all openings are complete.



FIRENZE
BLDG 43 UNIT # 6



Shutter Type
(by opening)



Date
Sep 12, 2007
Document ID
FIREN 43-6
Page 1 of 1

KHovnanian
FIRENZE
BLDG 43 UNIT # 6
Boynton Beach, FL, 33

BLDG 43 Unit # 6 (1310)
Installation Drawing

Impact Hurricane Shutters
1700 Latham Rd, Ste 3
West Palm Beach, FL 33409
Phone: (561) 640-0151
Fax: (561) 471-5078





Builder: TOWN AND COUNTRY
 Community/Lot # FIRENZE LOT. 43

UNIT.	Opening #	# of Panels	Shutter Length	Direction	UNIT.	Opening #	# of Panels	Shutter Length	Direction	
UNIT 1	1	3.00	84	V	UNIT 4	7	IMPACT GLASS			
	2	3.00	84	V		8	5	69	V	
	3	3.00	84	V		9	5	69	V	
	4	2.50	59	V		UNIT 5	1	5	84	V
	5	3.00	84	V			2	5	84	V
	6	IMPACT GLASS					3	5	84	V
	7	3.00	69	V			4	3	57	V
	8	3.00	69	V			5	5	69	V
	9	3.00	69	V			6	IMPACT GLASS		
	10	3.00	69	V	7		5	89	V	
	11	3.00	69	V	8		5	69	V	
	12	3.00	69	V	9		5	69	V	
	13	4.50	69	V	UNIT 6	1	3	84	V	
	14	3.00	57	V		2	3	84	V	
	15	IMPACT GLASS				3	3	84	V	
	16	3.00	69	V		4	3	59	V	
	17	3.00	69	V		5	3	84	V	
	18	3.00	57	V		6	IMPACT GLASS			
	19	3.00	57	V		7	3	69	V	
	20	3.00	69	V		8	3	69	V	
	21	4.50	69	V		9	3	69	V	
	22	3.00	69	V		10	3	69	V	
UNIT 2	1	4.50	84	V		11	3	69	V	
	2	4.50	69	V		12	3	69	V	
	3	IMPACT GLASS				13	5	69	V	
	4	3.00	57	V		14	3	57	V	
	5	4.50	69	V		15	3	57	V	
	6	4.50	69	V		16	IMPACT GLASS			
	7	IMPACT GLASS				17	3	69	V	
	8	3.00	69	V		18	3	57	V	
	9	4.50	69	V		19	3	57	V	
UNIT 3	1	4.50	84	V		20	3	69	V	
	2	IMPACT GLASS				21	5	69	V	
	3	4.50	69	V		22	3	57	V	
	4	3.00	57	V						
	5	4.50	69	V						
	6	IMPACT GLASS								
	7	4.50	69	V						
	8	3.00	69	V						
	9	4.50	69	V						
UNIT 4	1	4.50	84	V						
	2	4.50	69	V						
	3	IMPACT GLASS								
	4	3.00	57	V						
	5	4.50	69	V						
	6	4.50	69	V						