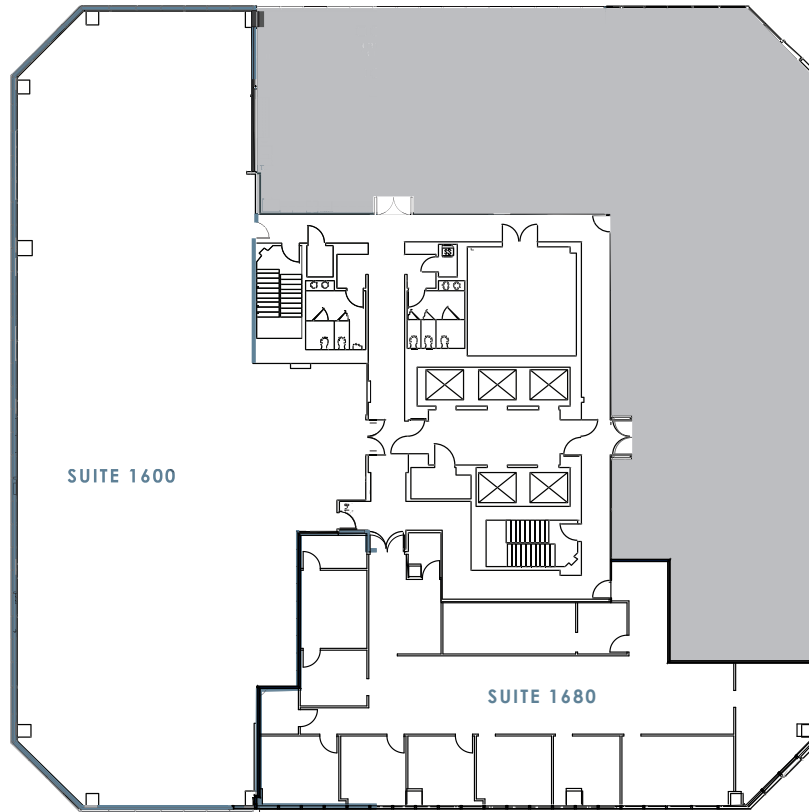


1 COLUMBIA PLACE

SUITES 1600 + 1680

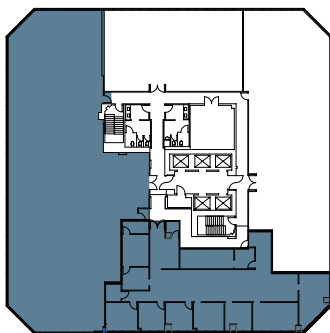
401 WEST A STREET SAN DIEGO CA 92101
 LANDMARK DOWNTOWN
 CLASS A OFFICE BUILDING
 27 STORIES TOTALING 556,750 SF

*Contiguous Potential



N

W



E

SUITE	1600	1680
RSF	8,354	4,459
STATUS	Vacant	Vacant
DESCRIPTION	Whitebox Condition + Bay Views *Contiguous Potential	Large Interior Storage + 6 Private Offices + Bay Views *Contiguous Potential

S

For additional information:

STEVEN M. BRUCE
 858.875.3605
 steve.bruce@ngkf.com
 CA RE Lic. #01455744

CHRISTOPHER P. HIGH
 858.875.3604
 chris.high@ngkf.com
 CA RE Lic. # 01734544

CONOR EVANS
 858.875.3607
 conor.evans@ngkf.com
 CA RE Lic. # 01963596

Owned & professionally managed by:

