

Interim Update Task Force Working Groups

July 2, 2020

Working Groups Recommend Stage 1-B

We will remain in stage 1-A until at least July 15th.

Stage Two

No in-person worship indoors until numbers have flattened or declined for two weeks in North Carolina.

Pastoral exceptions for baptisms, weddings and funerals with permission from the bishop.

Buildings and Supplies - Stage 1-A

- Evaluate the potential effectiveness of mechanical filtration (HEPA filters) and ultraviolet germicidal irradiation (UVGI) in HVAC systems to determine potential effective strategies for reducing the risk of dissemination of infectious aerosols in our buildings.

Note the Diocese will not be ordering supplies on behalf of parishes and will provide information on how to do so.

Direct Service - Stage 1-A

- Continue with a distribution model, collaborating with local businesses and nonprofits to provide essential outreach to the community.
- For volunteers and clients on-site, follow CDC recommended safety procedures, with outdoor options strongly preferred.

When we enter Stage 1-B:

- Use this time to prepare space and documentation for a limited return to the building as described in Stage 2.
- Put necessary documentation in place: Signage in the building, contact tracing measures such as sign in sheets, and update all necessary contact information for clients and volunteers.

Newcomers - Stage 1-A

- Develop concrete ways for churches to connect newcomers who begin online. The person may or may not live in the same community, state or even country.
- Discern how best to connect them in a more meaningful way with other members of the church. Is it through Bible Study or a virtual coffee hour? Are there continuing church or outreach ministries to which they can be invited to participate?
- Use community maps to and understand where members are located and their proximity to one another.
- Are there new areas that the church might see as missional opportunities now and in the future?
- The use of biblical stories to talk about welcoming the stranger, being a stranger and/or finding connection when one is isolated.
- Explore new and creative ways to engage people to connect with the church and to share their gifts in ministry.

PPEP - Stage 1-A

- Make sure you apply hand-sanitizer before and after removing your mask to receive communion if you are part of the recording team.
- If a preacher or soloist preaches or sings without a mask as the last segment of a service in the church (either pre-recorded or live streamed), no one else should be in the space except the camera person, who should have a mask on and be more than 20 feet away. No one should enter the space after this segment is recorded for six hours or more.
- The PPEP would like to add **fatigue, diarrhea, congestion or runny nose, and nausea or vomiting** to the symptom screening list. Also, based on the WHO study, we would recommend asking parishioners (and worship team) to take their temperature before leaving the house and staying home with ANY elevation in their normal temperature (average norm 98.6 but can vary slightly among individuals). We are NOT recommending that churches are the ones to temperature screen but they certainly may choose to do so.

Pastoral Care - Stage 1-A

- Pastoral care conversations via telephone, video call are also encouraged. All guidelines concerning confidentiality apply to these conversations as they would to in-person conversations.
- As many of these involve visiting the elderly who are at increased risk (and many are in assisted living centers or nursing homes where visiting is still prohibited and are, in many instances, prone to having COVID-19 cases), outdoor visits, with masks and appropriate distance, are preferable. Possibly visits conducted at an open window would be an option for visits at home or at a closed window where the clergy and the person being visited could see each other and actually talk by phone. If the person is COVID positive, the visits should be by phone only. The concern always regards asymptomatic spread to at-risk people.

- End-of-life care in hospitals, hospices, etc. can be offered as those institutions allow. The clergy person must wear proper PPE and follow the guidelines below for offering unction or baptism.
- All pastoral visits assume that neither the visitor nor the clergy person has any symptoms of COVID-19 (realizing many may be presymptomatic and/or asymptomatic).
- The Pastoral Care Task Force also recommends that the existing Pastoral Resources page on the diocesan website remain available, with the following modification to the guidelines on Ministration of Last Rites (see italicized portions in bold below. We have substituted the language of “minister of the congregation” for “priest” both in keeping with the Prayer Book’s language, and to be sure that deacons, as well as priests, are included.) BCP 462.

Schools - Stages 1-A

- Preliminary Recommendations will be presented at a stakeholder meeting July 8.
- Presenters will share free online resources for Fall Christian Formation.
- After receiving feedback and more work by the Task Force, final recommendation will be made to Bishop Sam.

Small and Rural Congregations - Questions being addressed for Stage 1-B and beyond

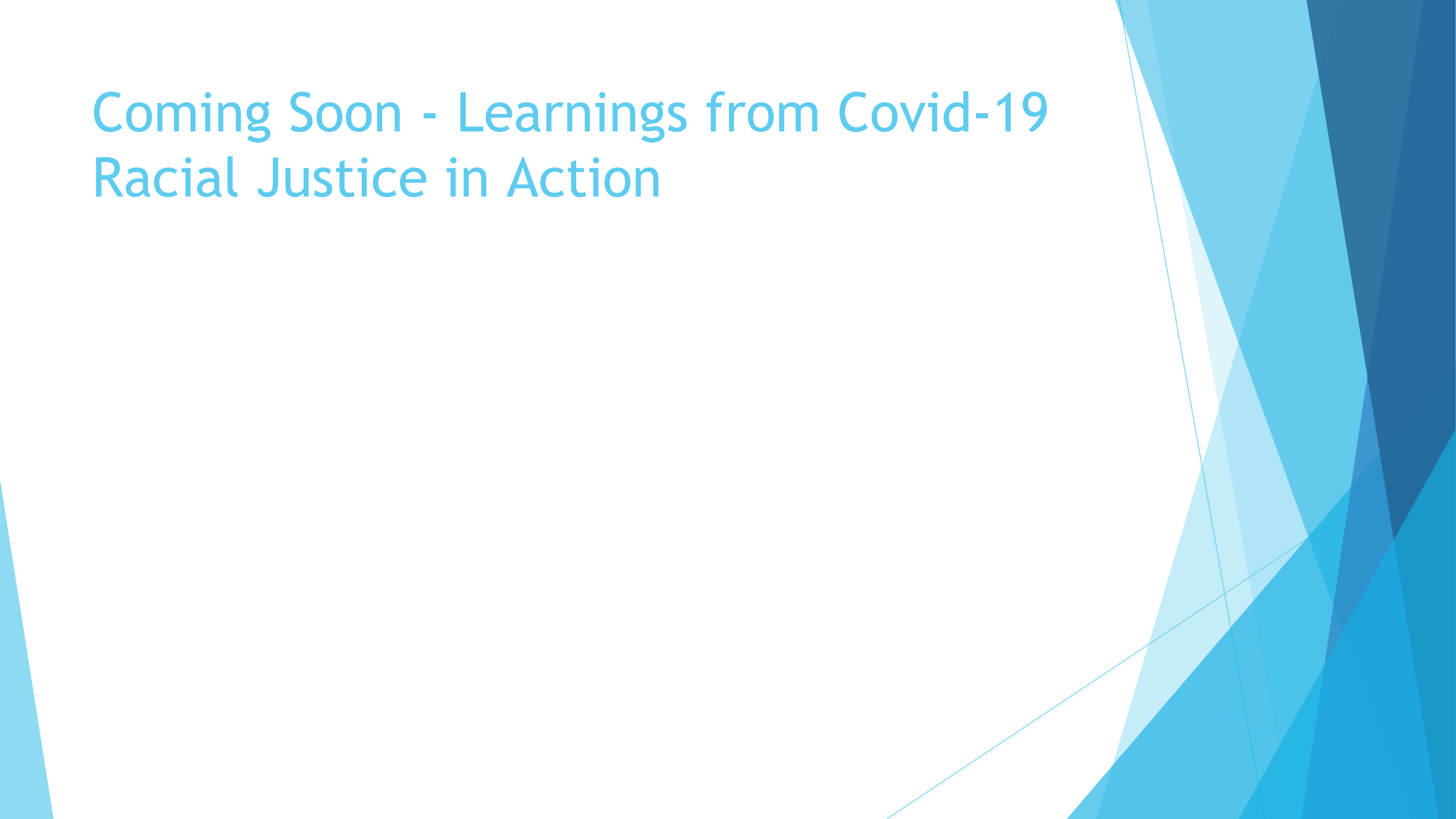
- How can we provide pastoral support for vulnerable congregations that are in crisis due to attrition and loss?
- Could consideration be given for a full-time paid regional clergy coordinator?
- Empowering new lay leadership to give rest to overburdened core laity.
- How could large congregations with multiple clergy staff render assistance to small or otherwise vulnerable congregations?

Worship - Stage 1-A

- Soloist may sing without a mask at the end of recorded or livestream service with only the camera person present, masked and at least 20 feet away. No one should re-enter the space afterward for six hours or more.
- In Stage 1-B we will allow outdoors services of up to 25 people wearing masks and socially distanced 6 feet or more between households.
- Indoor services of weddings, baptisms and funerals are allowed only with the permission of the bishop and only up to 25 people.
- Singing outdoors by soloists will be allowed without masks if they are 20 feet away from all others.
- Vestments should **NOT** be shared. Bring your own.

Coming Soon - Learnings from Covid-19

Racial Justice in Action



Working Group Co-Chairs

- ▶ Buildings & Supplies - Peter Macon; Chuck Collier
- ▶ Children and Family Ministries (including schools) - Caroline Stephenson; the Rev. Lauren Villemuer-Drenth
- ▶ COVID-19 Learnings - the Rev. Nathan Kirkpatrick; the Rev. Dixon Kinser
- ▶ Direct Services - Joy Shillingsburg; the Rev. Nancy Vaders
- ▶ Newcomer Ministry - the Rev. Jamie Pahl; Phyllis Pickett
- ▶ Pastoral Care - the Rev. Sarah Ball-Damberg; the Rev. Velinda Hardy
- ▶ Protection, Prevention and Equipment Practices - the Rev. Scott Balderson; Lisa D'Amico
- ▶ Small and Rural Congregations - the Rev. Dan Mannen; the Rev. Jamie Edwards
- ▶ Worship - the Rev. Lisa Fischbeck; the Rev. Joe Mitchell