

THE PERFECT MISFIT

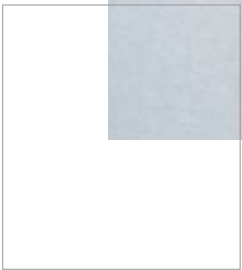
In a world of absolutes, in a world of 'perfections', there comes a need to truly find joy in what the imperfections bring to the table. The hands of an artisan have a certain rhythm, a certain melody in the movement.

DE'ANMA





MT-E-8



IMPERFECT PERFECTION

Hold yourself to a standard of grace, not perfection.
Be imperfect, be yourself.





MT-E-9

PARADOX

Let's make a beautiful paradox together,
not a boring counter statement.



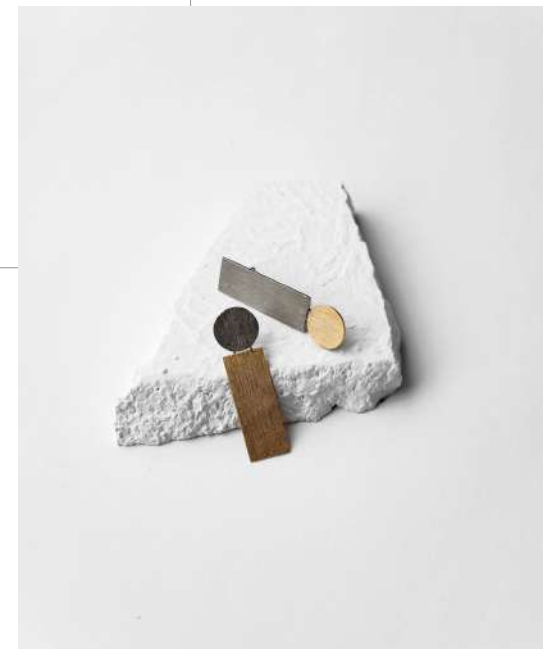
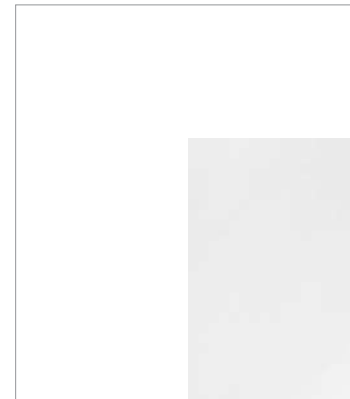


MT-E-10



OPPOSITES ATTRACT

Why do men like intelligent women?
Because opposites attract.





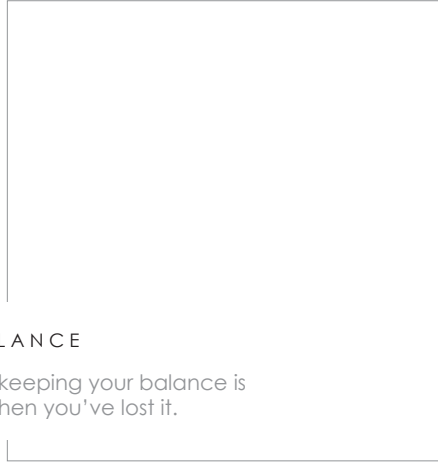
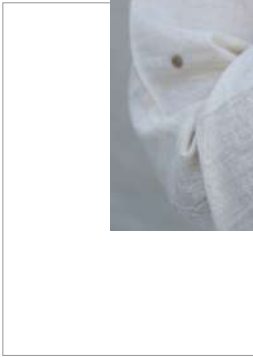
SIBLING

Siblings are as close as hands and feet. So enjoy the mutuality of parentage with yours.





MT-E-12



OFF BALANCE

The key to keeping your balance is knowing when you've lost it.



VICE VERSA

When you feel good, you look good
and vice versa.





MT-E-14



TRINITY

Just like divided realms stand united, protect yourself against all odds using three lines of defence.





MT-E-15



SQUARE TRINITY

Falling down is life. Getting back up is living if right from square one.



MT-E-16

YIN YANG

In this conflict of unity and duality, be as dynamic as the whole offers you to be, that is, an indivisible whole.





ANTIPOLE

Take two opposites, connect the dots.
You have a straight line and lead the lot.



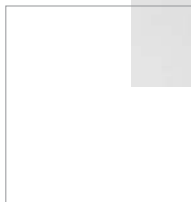


MT-E-19

UPSIDE DOWN

Turn your frowns upside down and stay picture perfect.





BUTTON UP

Get up, button up and show up.
Look Impeccable.





TWINNING TOWER

Fortify your strengths, guard your dreams, combine the twin capacities and ascend to be among niche!



TWINNING MOON

Add your dualities, pair your polarities, twinning is in trend,
get your drift across the seas.

MT-N-03



ABACUS

Nothing shapes your life more than the commitments you choose to make. Count them accordingly.





MT-R-01



YIN

If her strength intimidates you,
realise it's your weakness.

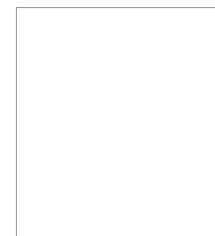




OBLIQUE

An oblique compliment or a straight truth,
women prefer unflattering content.





DOMAIN

Faced with a choice, do both.
Create your own domain.



MT-R-05



QUAD RULE

Pay attention to distractions.
Quads rule over lines.



DE'ANMA