



draft • design • build

# The multi purpose workstation and collaborative solution





Two functions for one room. Our most advanced multifunctional workspace solution provides immediate access to hidden computer screens and keyboards. The design can work with any type of computer, including Apple Macs, and thanks to the unique interlocking design it can offer a seamless expandable work space for everyone no matter what size your area is . At the touch of a button the central section lowers to provide a flat workspace for collaborative purposes and can even take a fixed stand for AV and interactive screens to enhance sharing of communication. Optional matching storage and ventilated PC cabinets for high spec computers can be added to complete the look.

#### IDEAL APPLICATIONS:

- ICT suites in primary and secondary schools
- Colleges
- Universities
- Call centres
- Sales offices
- Open plan spaces
- Expanding workplaces with our jigsaw interlocking design

#### PRODUCT FEATURES

- **Safe & secure** – IT locked away.
- **Flexible** – easily maintained and configured thanks to the jigsaw design.
- **Invisible cable management** – no trailing cables to trip over or pull out.
- **Efficient** - multiple desks can be powered from 1 socket.
- **Expandable** – linkable units available as 2 and 3 seats (row), 4 and 6 seats (b2b).
- **Robust** – long-lasting and solid construction with our 25-year guarantee.
- **Choice** – huge range of finishes, colours and options available.
- **Guaranteed** – worktop 25 years, mechanism 3 years.
- **Central control** – all i-rise's can be controlled from one central point.
- **Value** – low total cost of ownership.



USB CHARGING\*



HEAT CONTROL\*



POWER MODULE\*



WIRELESS CHARGER\*



RISE CONTROL



INTERLOCKING



INTEGRATED IT\*



PC HOLDER\*



MULTIFUNCTIONAL



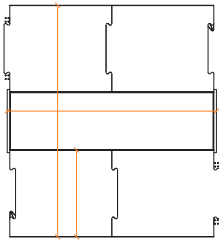
VENTILATED PC'S CABINET\*



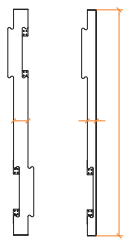
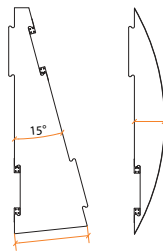
AV FIXING\*

\* OPTIONAL

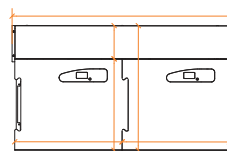
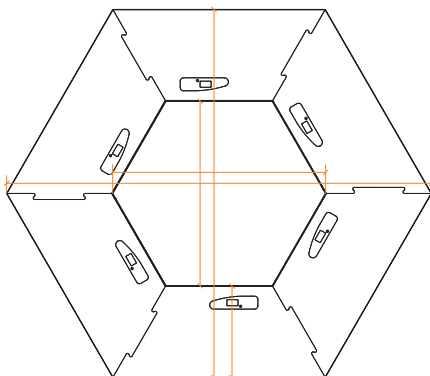
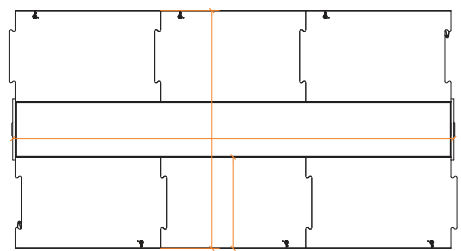
B2B



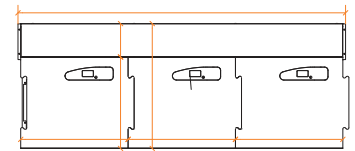
Hex



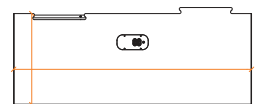
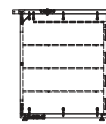
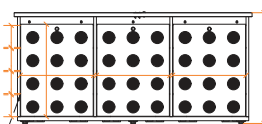
Row



Ventilated Cabinet



Removable Shelves



OPTIONS AND FINISHES

OPTIONS	I-Rise B2b	I-Rise Hex	I-Rise Row
LAMINATED MDF 26.5MM WORKTOP	✓	✓	✓
I-HEAT WORKTOP	✓	✓	✓
NATURAL ACRYLIC SURFACE WORKTOP	✓	✓	✓
LAMINATED PLYWOOD WORKTOP	✓	✓	✓
KYDEX MDF WORKTOP	✓	✓	✓
TRESPA WORKTOP (TOPLAB BASE OR PLUS)	✓	✓	✓
0 FIRE RATED LAMINATED MDF WORKTOP	✓	✓	✓
LINKABLE (JIGSAW DESIGN)	✓	✗	✓
MOBILE UNIT (CASTORS)	✓	✗	✗
I-DESK CASSETTE (SLIM PC)	✓	✓	✓
USFF & SFF (PC)	✓	✓	✓
STANDARD & LARGE PC	✓	✗	✗
ALL-IN-ONE SCREEN	✓	✓	✓
FANLESS MINI-PC	✓	✓	✓
APPLE IMAC	✓	✓	✓
FIXED MONITOR ARM with USB/AUDIO SOCKETS	✓	✓	✓
INTEGRATED AV FIXING	✓	✓	✓
USB CHARGING	✓	✓	✓
POWER MODULE	✓	✓	✓
Qi WIRELESS CHARGER	✓	✓	✓

Laminated MDF Finishes\*\*\*



Natural Acrylic Surface Finishes



Kydex Range Finishes



Bespoke finishes are available upon request but are subject to modified lead times.

\*\*\* laminate range subject to change

DIMENSIONS

B2B	Row
Length 4 Seats: 1420mm	Length 2 desks: 1420mm
Length 6 Seats: 2130mm	Length 3 desks: 2130mm
Depth: 1580mm	Depth: 820mm
Hex	Min. height: 740mm
Length: 2400mm	Max. height: 1210mm
Depth: 2700mm	Max. load: 100kg

All our products are designed in-house and are constantly improved.

For more information about Pinnacle complete office solutions and the ddb range, please check out [www.pinnaclecos.co.uk](http://www.pinnaclecos.co.uk)

Alternatively call 02920 365 222 to book a workplace consultation with an Pinnacle specialist



AUTHORISED DEALER



Maxon House, Hogwood Lane, Finchampstead, Berkshire RG40 4QW



Made in Britain ISO9001:2015 certified ISO14001:2015 certified

TEST CERTIFICATE

Compliance with a Harmonised European Standard also gives the presumption of compliance with the Principal Elements of the Safety

TEST REPORT

EN 60335-2-30: Particular requirements for room heaters & BS6396: Electrical Systems in Once Furniture AVAILABLE ON REQUEST