

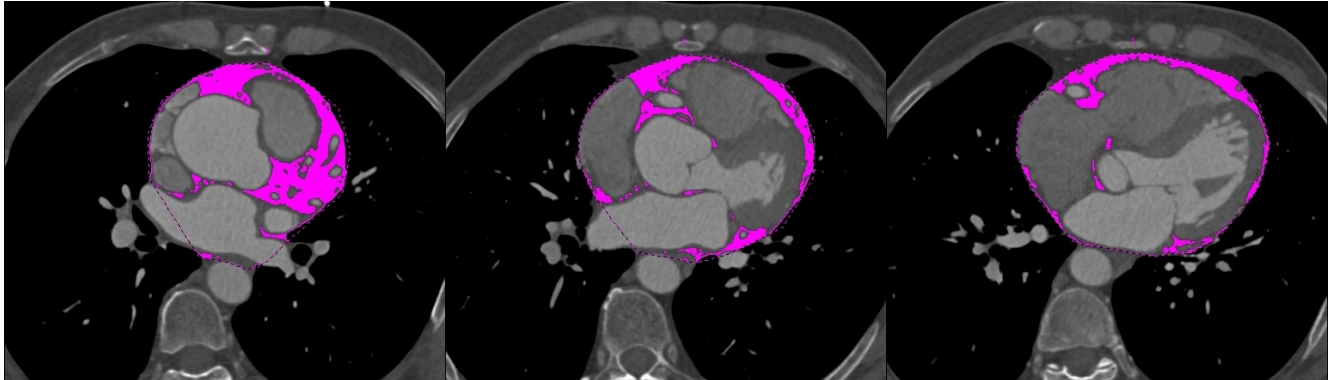
Journal of

# *Clinical and Analytical Medicine*

Vol: 8 No: 2 March 2017

## The Relationship Between Epicardial Adipose Tissue Volume and Coronary Plaque Structure in Diabetics

Aksan G, Sığircı S, Çetinkal G, Ayhan BM, Yıldız SS,  
Soylu AI, Başak M, Kılıçkesmez KO



### Contents;

- *Peripheral Facial Nerve Paralysis Secondary to Acute Otitis Media*
- *The role of Histopathology, Endometrium Thickness and Obstetric History in Abnormal Uterine Bleeding*
- *Evaluation of Erythrocyte and Thrombocyte Parameters in Pediatric Patients with Diabetes Mellitus*
- *Evaluation of Renal Function in Children by Tc-99m DTPA Scintigraphy*
- *The Levels of Serum B12, Folic Acid and Homocysteine in the Thromboembolic Diseases*
- *Neutrophil: Lymphocyte Ratio and Mean Platelet Volume in Patients with Gout*
- *Does Obesity Impact Assisted Reproductive Outcomes in Patients with Endometriosis?*
- *The Comparative Analysis of Biochemical Parameters in Patients with Pleural Effusions: A Prospective Study*
- *The Relationship Between Postpartum Depression and Intimate Partner Violence*
- *Complications of Spinal Cord Injuries: Two Case Reports and a Review of the Literature*
- *Patient Preparation for Oncological FDG-PET/CT Imaging*