



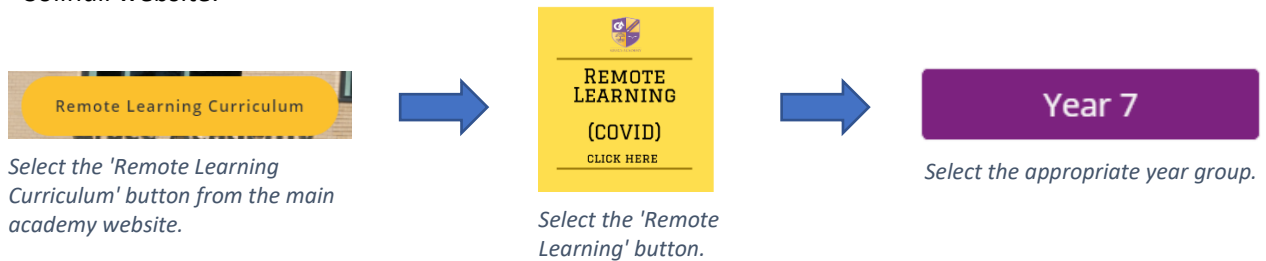
# REMOTE CURRICULUM – PARENTAL GUIDE

To enable parents/carers to effectively support their children in engaging with the remote learning curriculum, we have created this reference guide to the remote learning digital platform supported by G-Suite for Education.

It is our intention that through remote learning we are able to teach a planned and well sequenced curriculum so that knowledge and skills build incrementally and that students can progress through the school's curriculum.

## How does my child log on?

Each student's remote learning schedule can be found in three easy clicks from the Grace Academy Solihull website:



## What is the daily provision for my child?

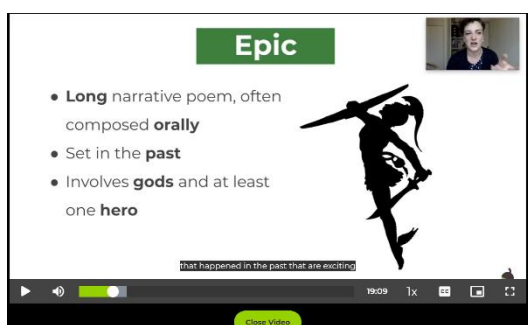
Each day your child will follow a schedule of remote learning activities that closely mirrors the timetable they would follow if they were in the academy. This provides students in all year groups with at least **five hours of high-quality remote learning resources per day**. Live lessons form the foundation of a student's remote learning curriculum and allow all students to receive immediate feedback from subject experts based in specialised studios set up in the academy. The remainder of a student's schedule is delivered via carefully selected non-live resources, in the form of both the government-recommended Oak National Academy lessons and bespoke resources recorded and created by Grace Academy teachers.

Monday 11/01	Tuesday 12/01	Wednesday 13/01	Thursday 14/01	Friday 15/01 <i>Assembly</i>
Session 1 09:00 - 09:50 <i>Geography Live Lesson</i>	Session 1 09:00 - 09:50 <i>History Live Lesson</i>	Session 1 09:00 - 09:50 <i>Geography Live Lesson</i>	Session 1 09:00 - 09:50 <i>History Live Lesson</i>	Session 1 09:00 - 09:50 <i>French</i>
Session 2 10:00 - 10:50 <i>PE</i>	Session 2 10:00 - 10:50 <i>PSHE</i>	Session 2 10:00 - 10:50 <i>Performing Arts</i>	Session 2 10:00 - 10:50 <i>Art</i>	Session 2 10:00 - 10:50 <i>Technology</i>
Session 3 11:00 - 11:50 <i>Maths Live Lesson</i>	Session 3 11:00 - 11:50 <i>Maths Live Lesson</i>	Session 3 11:00 - 11:50 <i>Maths Live Lesson</i>	Session 3 11:00 - 11:50 <i>Maths Live Lesson</i>	Session 3 11:00 - 11:50 <i>Maths Live Lesson</i>
Session 4 12:00 - 12:50 <i>English Live Lesson</i>	Session 4 12:00 - 12:50 <i>English Live Lesson</i>	Session 4 12:00 - 12:50 <i>English Live Lesson</i>	Session 4 12:00 - 12:50 <i>English Live Lesson</i>	Session 4 12:00 - 12:50 <i>English Live Lesson</i>
Session 5 13:00 - 13:40 <i>Science Live Lesson</i>	Session 5 13:00 - 13:40 <i>Science Live Lesson</i>	Session 5 13:00 - 13:40 <i>Science Live Lesson</i>	Session 5 13:00 - 13:40 <i>Science Live Lesson</i>	Session 5 13:00 - 13:40 <i>Science Live Lesson</i>
Lunch 13:40 - 14:20	Lunch 13:40 - 14:20	Lunch 13:40 - 14:20	Lunch 13:40 - 14:20	Lunch 13:40 - 14:20
<i>Learning review</i> Please complete each day.	<i>Learning review</i> Please complete each day.	<i>Learning review</i> Please complete each day.	<i>Learning review</i> Please complete each day.	<i>Learning review</i> Please complete each day.

An example of a student's daily remote learning schedule.



Delivering live lessons from one of our studios in the academy.



A video lesson from the government-recommended Oak National Academy.

**Expand and simplify:**

<ol style="list-style-type: none"> <li><math>(x+1)(x+2)</math></li> <li><math>(x+2)(x+3)</math></li> <li><math>(x+1)(x+6)</math></li> <li><math>(x+3)(x+4)</math></li> <li><math>(x+3)(x+7)</math></li> <li><math>(x+5)(x+5)</math></li> <li><math>(x+6)(x+8)</math></li> <li><math>(x+18)(x+1)</math></li> </ol>	<ol style="list-style-type: none"> <li><math>(x+3)(x-6)</math></li> <li><math>(x-5)(x+2)</math></li> <li><math>(x+4)(x-2)</math></li> <li><math>(x-1)(x+5)</math></li> <li><math>(x+7)(x-3)</math></li> <li><math>(x-5)(x+4)</math></li> <li><math>(x+2)(x-3)</math></li> <li><math>(x-3)(x+4)</math></li> </ol>	<ol style="list-style-type: none"> <li><math>(x-1)(x-1)</math></li> <li><math>(x-3)(x-2)</math></li> <li><math>(x-4)(x-2)</math></li> <li><math>(x-5)(x-1)</math></li> <li><math>(x-6)(x-4)</math></li> <li><math>(x-3)(x-6)</math></li> <li><math>(x-7)(x-8)</math></li> <li><math>(x-12)(x-2)</math></li> </ol>	<ol style="list-style-type: none"> <li><math>(2x+2)(x-1)</math></li> <li><math>(3x+1)(x+2)</math></li> <li><math>(5x+7)(2x+4)</math></li> <li><math>(4x+10)(4x-10)</math></li> <li><math>(2x-9)(2x-9)</math></li> <li><math>(7x+12)(2x-12)</math></li> <li><math>(6x-6)(5x-6)</math></li> <li><math>(2x+5)(4x+5)</math></li> </ol>
---	--	---	--

To ask questions please email: [gaslivemaths@graceacademy.org.uk](mailto:gaslivemaths@graceacademy.org.uk)

A bespoke live lesson delivered from Grace Academy.



## REMOTE CURRICULUM – PARENTAL GUIDE

### How will my child receive feedback and support?

- **Live lesson feedback** – During every live lesson, students are able to communicate directly with the teacher who can respond to questions, adjust the pace of the lesson and gauge students' progress through the curriculum in real-time.
- **Learning reviews** – Students complete daily learning reviews reflecting on what they have learnt and identifying any areas in which they would like more support from their subject teachers. Grace Academy teachers review students' responses each day to provide individualised feedback to support students' progress.

Year 10 Learning Review

Which areas of work would you like more support from your teachers? \*

Your answer

Do you have any questions for your teachers? Please include the subject, your usual classroom teachers name, and your question. \*

Your answer

Submit

**Learning review**  
Please complete each day.

*The learning review to be completed each day.*

*An example of a learning review prompting pupils to reflect on what they have learnt and identify areas in which they need support.*

- **Direct communication with teachers** – Your child can directly email their subject teachers at any point throughout the week and receive personalised feedback and support tailored to their needs. Students are encouraged to send any completed work that they would like to receive feedback on to their subject teachers. A list of teachers' e-mail addresses is provided on each student's remote curriculum page.

#### Teacher Email Addresses

*A link to teachers' email addresses can be found on each student's remote curriculum page.*

- **Progress checks** – Following the completion of a series of lessons students will complete progress checks in key subjects which will be marked by Grace Academy teachers and students will receive targeted feedback. These will form part of a student's weekly timetable and can be accessed from their remote learning schedule.

Year 9 Human Biology Science progress check

This assessment will test your knowledge on the work you have been completing in half term 3.

This form is automatically collecting email addresses for GRADE ACADEMY users. [Change settings](#)

This question is about the structure of the eye. What is the function of the retina? \*

Tough outer layer of eye which refracts light.

Light sensitive cells found at the back of the eye.

Focuses light on the retina.

Carries impulse to the brain.

This question is about the structure of the eye. What is the function of the cornea? \*

Tough outer layer of eye which refracts light.

Light sensitive cells found at the back of the eye.

Focuses light on the retina.

Carries impulse to the brain.

*Students will receive targeted feedback on progress checks in key subjects.*



## REMOTE CURRICULUM – PARENTAL GUIDE

### How is the provision enriched?

To support students' wider development, students access weekly PSHE lessons, assemblies recorded and broadcast from the academy, and have full access to our broad and balanced curriculum. Well-being support and resources are available to all students, alongside weekly pastoral phone-calls.



Sometimes we can ask ourselves the question "How am I feeling?" and sometimes the answer is "Not too good. I feel low, I lack energy, I'm anxious, I'm worrying about different things, I can't sleep, I can't concentrate, I have no motivation, I'm not eating healthily..."

**YOUNG**MINDS

*The Student Support page of the academy website.*

Click here if you need support!



*A bespoke assembly delivered by the Grace Academy ethos team.*

### How can I support my child with their learning from home?

Where possible, discuss your child's learning with them each day and ask if there was anything they found difficult to understand or would like further support with. Encourage your child to seek support with their learning by e-mailing/contacting their teachers or asking questions during live lessons, discussing the feedback they receive with them.

In addition to the wealth of curriculum resources provided by the academy, students can be directed to a range of useful and engaging online resources linked from the academy webpage.



### What if my child doesn't have ICT access?

If you do not have an internet connection or your child does not have access to a suitable device that can access the internet, please contact the academy using the contact details provided at the end of this guide, or complete the 'Am I equipped...?' form on the remote learning webpage.



*Laptops to support online learning.*



## REMOTE CURRICULUM – PARENTAL GUIDE

### What if my child doesn't have the equipment they need?

Should you need the academy to provide equipment for your child to engage with the remote learning curriculum, such as paper and pens/pencils, then please contact your child's Head of Year using the useful contacts at the end of this guide.

### What if my child would like to do more than five hours each day?

If pupils have completed their five hours of live lessons and non-live resources for the day, links to both bespoke additional learning resources produced by Grace Academy teachers and government-recommended Oak National Academy lessons are provided for pupils below their normal weekly timetable.

#### Additional work to complete if you have finished the above:

If you finish the below resources additional archived work can be found [here](#).

Day 1	Day 2	Day 3	Day 4	English
<a href="#">History or Geography</a>	P.E. <a href="#">Cardio And Abs Workout</a>	English <a href="#">The Man He Killed (Part 1)</a>	<a href="#">History or Geography</a>	English <a href="#">Poppies (Part 1)</a>
<a href="#">Maths Foundation Higher</a>	English <a href="#">To Autumn (Part 2)</a>	Option A Subjects <a href="#">Click here</a>	English <a href="#">The Man He Killed (Part 2)</a>	Science <a href="#">Combined Science Triple</a>
English <a href="#">To Autumn (Part 1)</a>	Maths <a href="#">Foundation Higher</a>	Science <a href="#">Combined Science Triple</a>	Science <a href="#">Combined Science Triple</a>	Maths <a href="#">Foundation Higher</a>
Option B Subject <a href="#">Click here</a>	Option A Subjects <a href="#">Click here</a>	Option B Subject <a href="#">Click here</a>	Maths <a href="#">Foundation Higher</a>	<a href="#">History or Geography</a>
Science <a href="#">Combined Science Triple</a>	Science <a href="#">Combined Science Triple</a>	Enrichment <a href="#">Documentaries: Planet Earth</a>	Option A Subjects <a href="#">Click here</a>	Option B Subject <a href="#">Click here</a>

*Access to additional learning resources for pupils that wish to complete more than five hours per day.*

### How will the school keep in contact with me?

The academy will conduct frequent, at least weekly, phone calls with parents/carers and all students to offer both academic and pastoral support, and to ensure that pupils are able to access the remote curriculum. You can of course contact anyone at the academy at any point throughout the week using the list of useful contacts at the end of this guide.

### What if my child has special educational needs?

The school will work collaboratively with parents/carers, putting in place reasonable adjustments as necessary, so that students with SEND can successfully access remote education alongside their peers. If you require any additional support please contact the SEND team on [gas-dvc@graceacademy.org.uk](mailto:gas-dvc@graceacademy.org.uk).



## REMOTE CURRICULUM – PARENTAL GUIDE

### Useful contacts:

If your child cannot remember their e-mail address and/or school account password, please e-mail the ICT support team at [help@gas-ict.on.spiceworks.com](mailto:help@gas-ict.on.spiceworks.com).

If your child has any subject specific questions about the work that they are completing from home, or completed work that they would like to receive feedback on, they can e-mail their subject teachers directly. A list of **teacher e-mail addresses** is provided on the remote learning webpage.

#### Teacher Email Addresses

For any other concerns, including support with equipment, resources or ICT access, e-mail addresses for **Heads of Year (HOY)** and **Assistant Heads of Year (AHOY)** are provided below:

**Year 7 – HOY** - Ms Holmes: [rosieholmes@graceacademy.org.uk](mailto:rosieholmes@graceacademy.org.uk)

**AHOY** - Ms Blake: [gemmablake@graceacademy.org.uk](mailto:gemmablake@graceacademy.org.uk)

**Year 8 – HOY** - Mr Sudbury: [joshuasudbury@graceacademy.org.uk](mailto:joshuasudbury@graceacademy.org.uk)

**AHOY** - Ms Perks: [leanneperks@graceacademy.org.uk](mailto:leanneperks@graceacademy.org.uk)

**Year 9 – HOY** - Ms Ellis: [rubymaiellis@graceacademy.org.uk](mailto:rubymaiellis@graceacademy.org.uk)

**AHOY** – Mr Shand: [phillipshand@graceacademy.org.uk](mailto:phillipshand@graceacademy.org.uk)

**Year 10 – HOY(s)** - Mrs Boyle and Mrs Fisher: [anne-marieboyle@graceacademy.org.uk](mailto:anne-marieboyle@graceacademy.org.uk) /

[sarahfisher@graceacademy.org.uk](mailto:sarahfisher@graceacademy.org.uk)

**AHOY**- Ms Whillock: [patriciawhillock@graceacademy.org.uk](mailto:patriciawhillock@graceacademy.org.uk)

**Year 11 – HOY** - Ms Knight: [louiseknight@graceacademy.org.uk](mailto:louiseknight@graceacademy.org.uk)

**AHOY** – Ms Reeves: [michellereeves@graceacademy.org.uk](mailto:michellereeves@graceacademy.org.uk)

**SEND Team:** [gas-dvc@graceacademy.org.uk](mailto:gas-dvc@graceacademy.org.uk)

You can also telephone the academy reception: 0121 329 4600



For support with well-being or mental health, access the well-being section of the remote learning website and a member of staff will be in contact.

If you have any further queries or general enquiries the senior leader with overarching responsibility for the quality and delivery of remote education is Mr Donald: [shaundonald@graceacademy.org.uk](mailto:shaundonald@graceacademy.org.uk).