

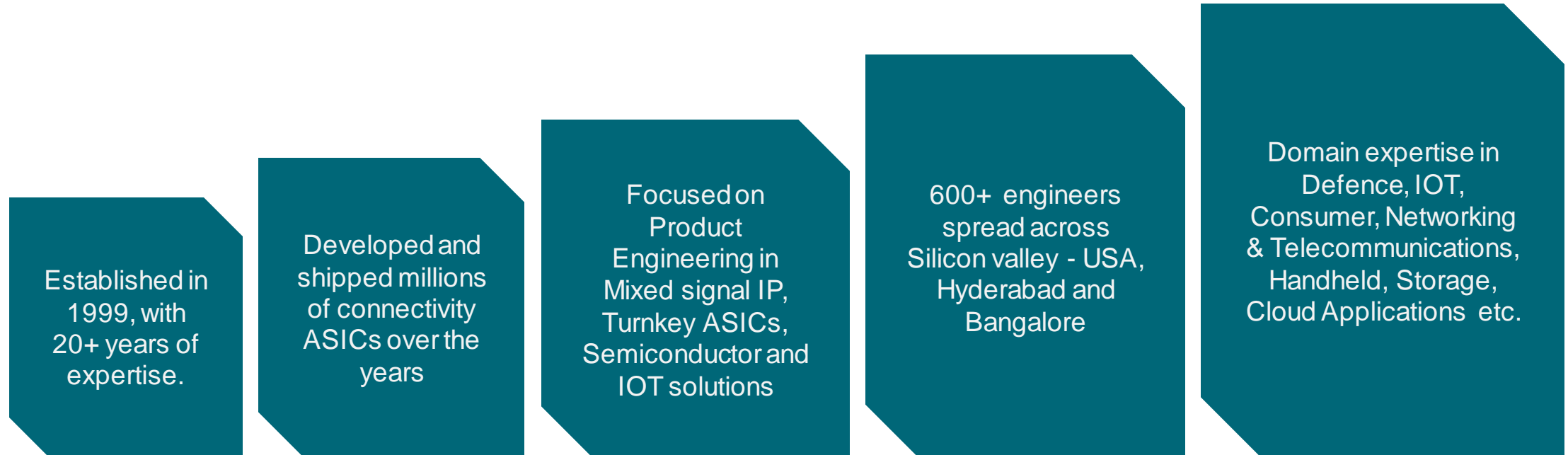
# CONNECTING THE WORLD

Silicon | Systems | IoT

**India's first publicly traded fabless semiconductor  
company & that's not all.**

**India's first publicly traded fabless semiconductor  
company & that's not all.**



# Overview



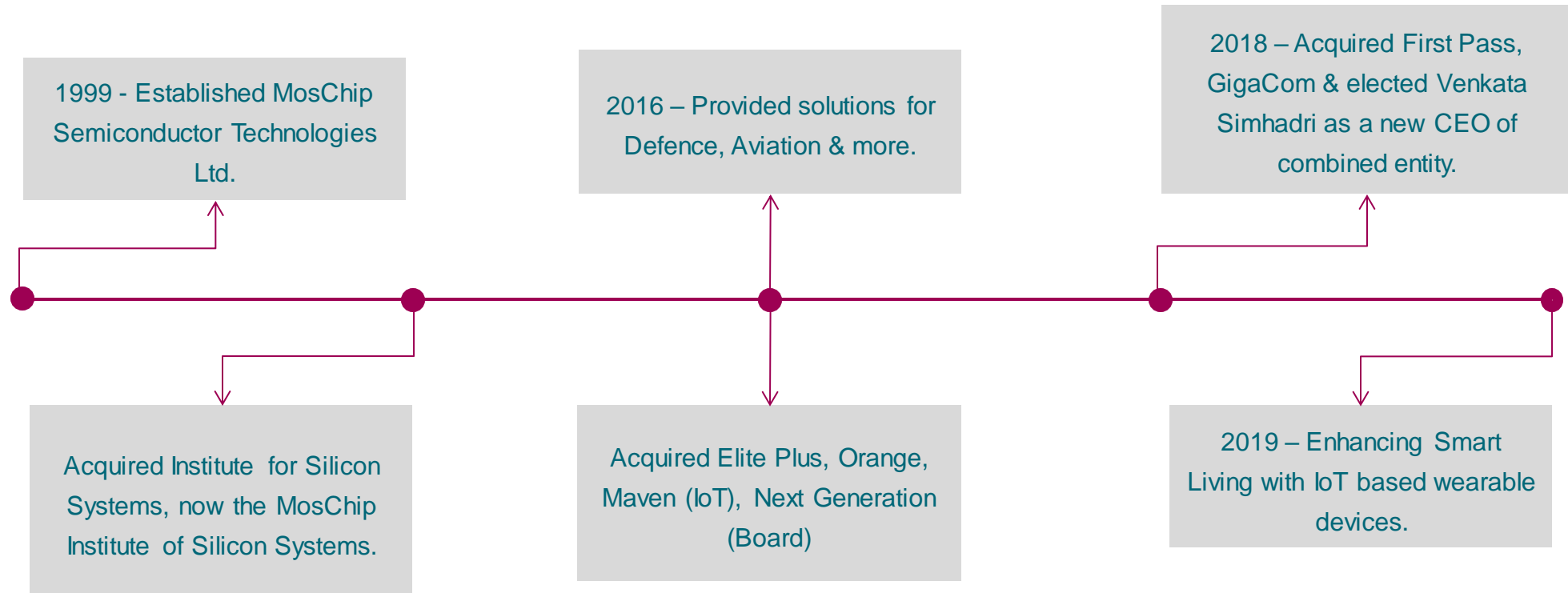
“We are one of the versatile organizations with solutions & services for almost every industry” – CEO

# Our Locations



-  Global Headquarters
-  Subsidiary/Branch Office

# Our Timeline



## Our Vision

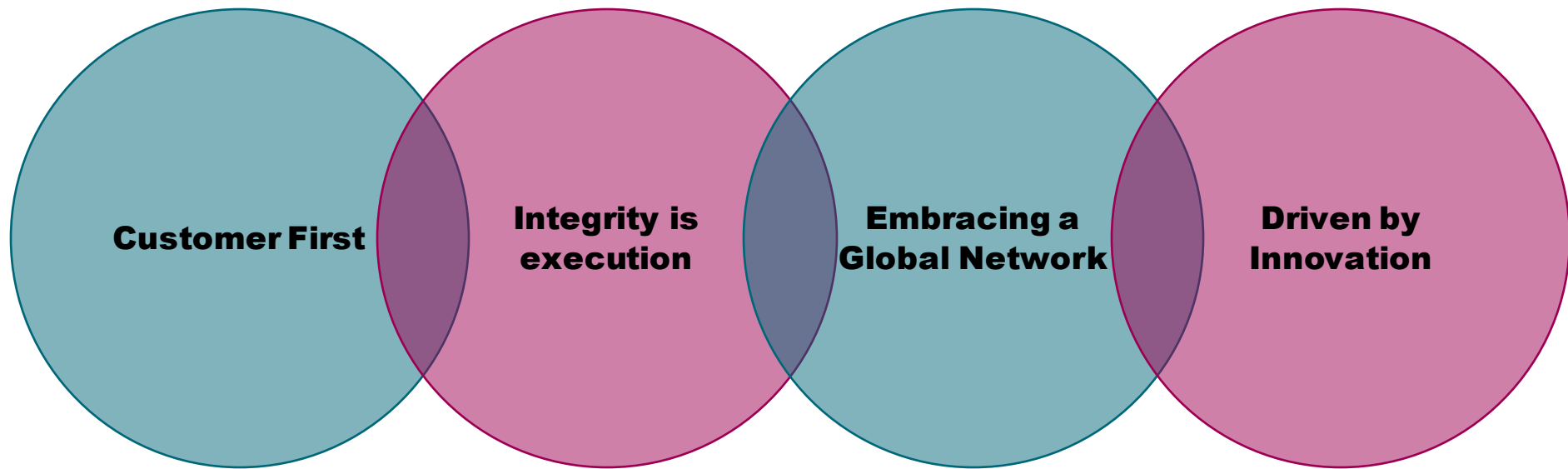
We aim to be recognized as global experts who not only use our expertise to solve our clients' complex problems but also leverage solutions with the promise of a seamless interface between humans and technology.

## Our Mission

To provide high quality and value-added Design Services, IP and Products to our customers utilizing our world-class engineering and management teams spread across the world. Create an “Employee First” work environment with Trust, Transparency and Teamwork.



# Our Values



# MosChip Family

**ASIC/FPGA**  
**(400+ Engineers)**  
Design, Verification,  
Synthesis PD, Layout & STA

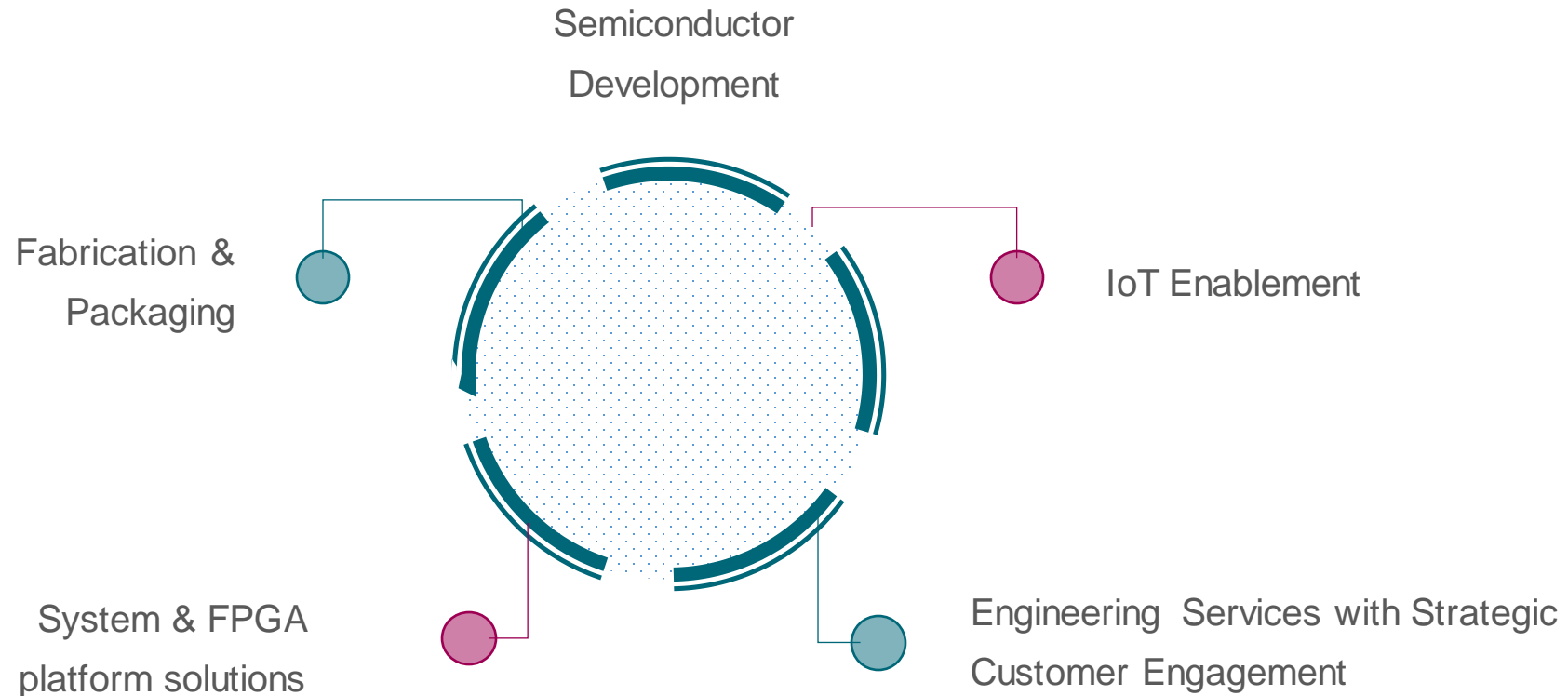
**IoT & platform**  
**(50+ Engineers)**  
Design, Software  
& Support



**SOFTWARE**  
**(75+ Engineers)**  
BSP, Linux, Driver  
development & Testing

**Board Design, Layout Testing**  
**(75+ Engineers)**  
Design, Layout & Testing

# Our Comprehensive Solution



# Business Units

## Semiconductors

### Semiconductor IP

- Digital IP
- Verification IP
- SerDes IP
- ADC / DAC IP
- PLL IP

### Semiconductor Design Services

- RTL design & verification Services
- Analog layout services
- Physical design services

### Turn-key ASIC / ASSPS

- Spec to Volume Production
- Working relationship with leading fabs
- Successful track record with Govt and consumer applications

## Embedded System Design & IoT Engineering

### Product / System Design

- High Speed Product & System Design
- Complex Platform Designs with FPGA, SoC & ASIC's
- DFM / DFA, & EMS
- Platform Bring-up & Validation

### Embedded Software

- OS Porting & Board Support Package
- Device Drivers – Bare metal, OS
- Software IP Development & Integration
- Software Testing
- Software maintenance/ support

### IOT Products

- CCMS – Group/ Individual lighting control
- Asset Monitoring
- Telematics

# Our Strategic Partners



# Our Target Industries



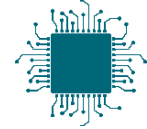
**IoT, Cloud & Connected Devices**



**Aerospace & Defense**



**Security Surveillance & Access Control**



**Semiconductor**



**Home & Industrial Automation**



**Medical Devices**



**Transport & Logistic**



**Retail**



**Automotive**



**Communication**



**Network & Telecom**



**Consumer Electronics**

**THANK YOU.**