

### Neighborhood Meeting

The purpose of tonight's meeting is to allow you to view the findings and recommendations of a Preliminary Engineering Study (PES) that evaluated existing flooding problems and identified engineering solutions along a tributary of Indian Creek, north of 103<sup>rd</sup> Street to 97<sup>th</sup> Street, between Lamar Avenue and Horton Drive.

### Study Background

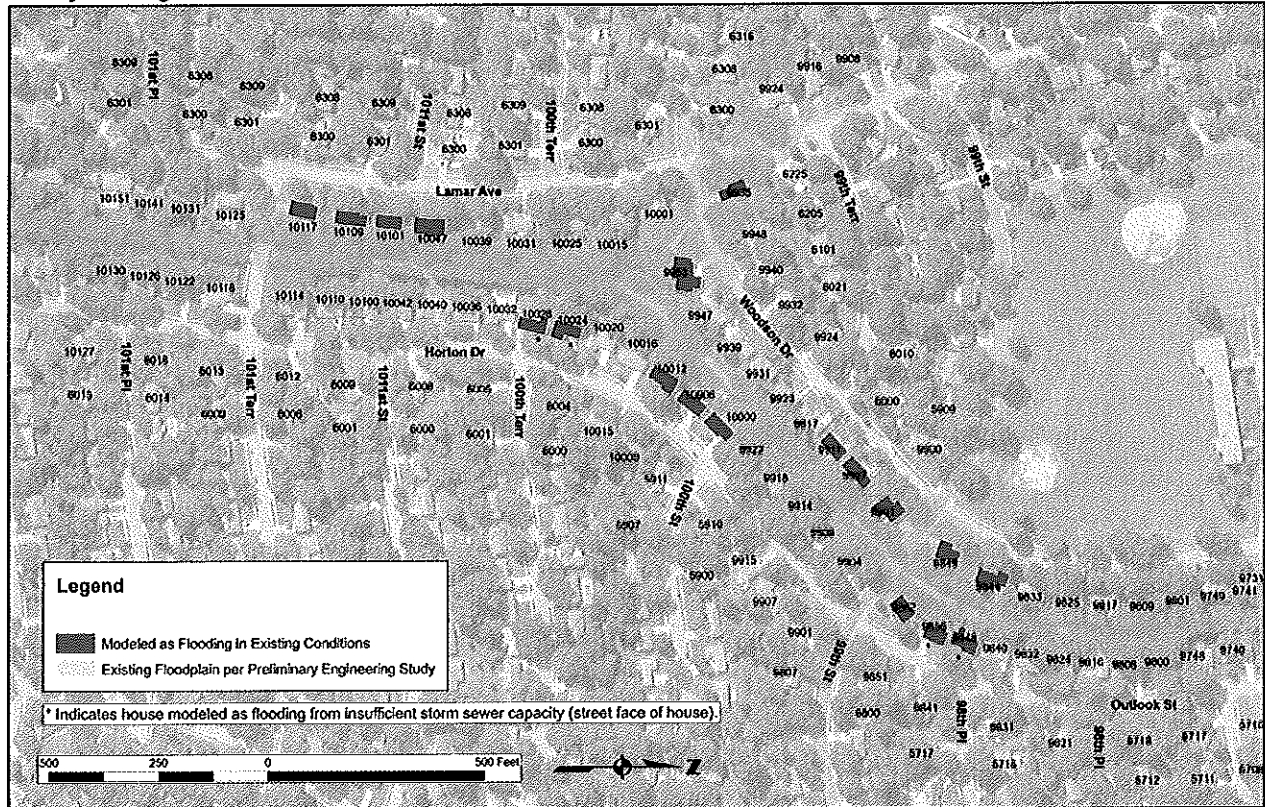


Figure 1 - Existing Conditions

The Nall Hills neighborhood generally developed in the late 1950s to early 1960s. In the past several years, the City has received numerous reports of street and structure flooding problems during significant rain events. Following the record events in 2017, the City retained the professional engineering services of HNTB to complete a PES to evaluate improvement alternatives to alleviate flooding risks, determine costs and identify a recommended alternative.

### Study Purpose

The PES is a mechanism to explore the feasibility of improvements to alleviate flooding risks and solicit funding assistance from the Johnson County Stormwater Management Program (JCSMP). The study identifies the risk and severity of flooding; develops a conceptual plan and preliminary costs for 3 alternatives; and identifies a recommended alternative.

