

Cheese Omelette

224GB90203505

Article Number



**ROMY
FOODS**

CHEESE OMELETTE

Cheese omelette served with mashed potato, green beans and sweetcorn.

902035
Supplier No.

224GB90203505
Article No.

Ingredients: cheese omelette (50%) (**egg** (47%) **milk** cheese (13%) (**milk**) **egg** white (5%) rapeseed oil thickener (e415) salt pepper) potato (21%) (**sulphites**) green beans (13%) sweetcorn (13%) water dried **skimmed milk** powder (**skimmed milk** powder **lactose** (**milk**) whey powder (**milk**) vegetable oil (coconut palm) dried glucose syrup **milk protein** sugar acidity regulator : e340b emulsifier : e471 vitamin d) liquid **butter** (vegetable oil (rapeseed oil palm oil) salt emulsifier : rapeseed lecithin flavouring (**milk**) colour : carotenes) salt white pepper

KEEP FROZEN at -18°C. If thawed, do not refreeze. To be consumed after heating.

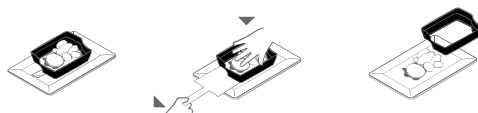
240.00g



A MEAL
For
A MEAL
Romy Foods Global Food Programme

This product has been produced in United Kingdom under license for Romy Foods Corporation Ltd, No.3, Independence Square, Valletta VLT1520 Malta.

Thanks! Each meal consumed helps our CSR initiative, check out: www.amealforameal.com.



Nutrition Information

Servings per package: 1
Serving size: 240.00g

	Per 100g	Per Product
Energy	134.6kcal	323.0kcal
Protein	6.7g	16.0g
Carbohydrates	7.5g	18.0g
Sugar	2.5g	6.0g
Fibre	1.5g	3.7g
Starch	5.0g	12.0g
Fat, Total	8.3g	20.0g
Saturated Fat	3.3g	8.0g
Sodium	0.2g	0.4g
Calcium	153.3mg	368.0mg
Vitamin B-12	1.2µg	2.8µg
Vitamin D	1.0µg	2.3µg

* Percent Daily Values are based on a 2,000 calorie diet. Your daily values may be higher or lower depending on your calorie needs.
