

roadmap•

Return to what?

→ with roadmap•

roadmap[®]

Return to...

Lower travel spend?

Increase Duty of Care?

Seamless travel experience?

Decrease carbon footprint?

Compliance?

Hotel RFP's?

Employee satisfaction?

New distribution capabilities?

Optimized booking tool?

Lowest logical?

roadmap•

The way we work has **changed**

→ And we don't know how it will impact travel

→ Risk & Reward

→ Virtual & Physical

→ Home & Office

roadmap[®]

What we do know....

Quality over quantity



Safety & Wellbeing first



High value & impact



Low Volumes

We need to focus on meeting the needs of travelers



delivering experience, productivity and satisfaction



Supplier independent



Consumer technology



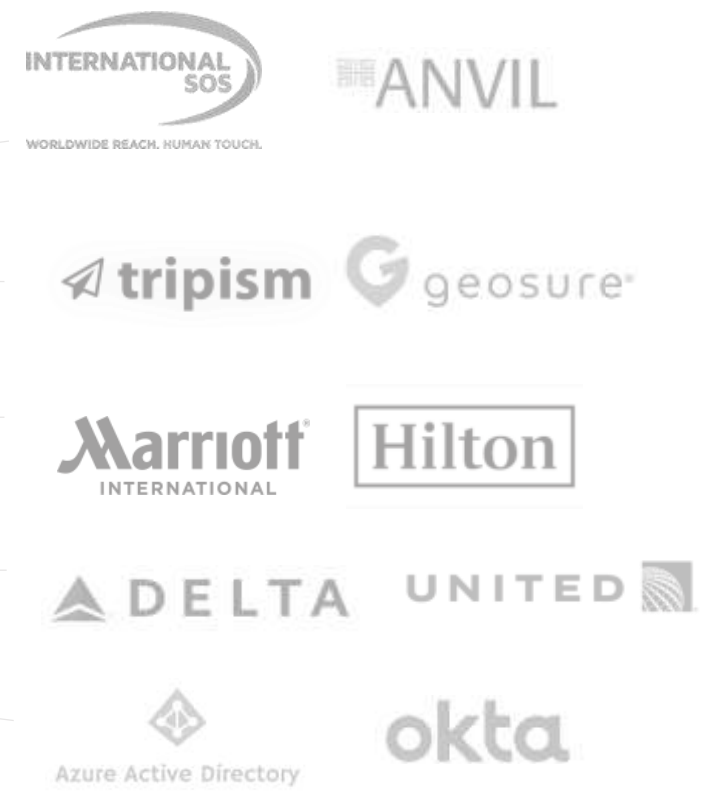
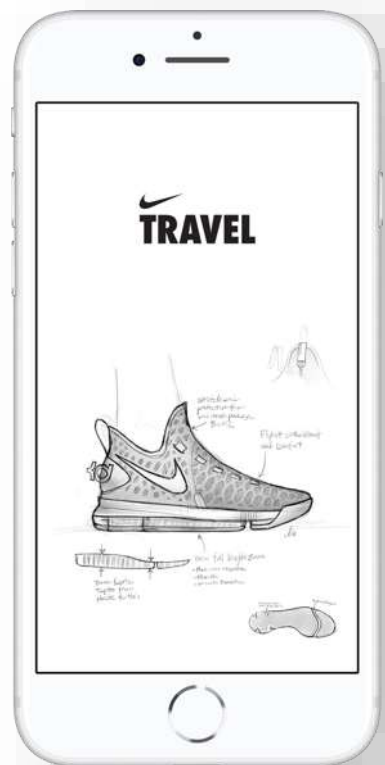
Data transparency

We're a team of Dutch travel techies & designers



The “angel” in your employees' pocket

Your travel program, your message and your suppliers into one seamless corporate branded experience



➔ **Simplify workflow**

➔ **Control the message**

➔ **Extremely open and flexible**



Every trip processed, improves the next trip using automated and self learning cycles for you and your colleagues

roadmap°



Loved by our enterprise customer base.

With an aggregated travel & expense spend of over **5 billion USD.**

Show you care.



Deliver safety, wellbeing and productivity to travelers



Supplier independent

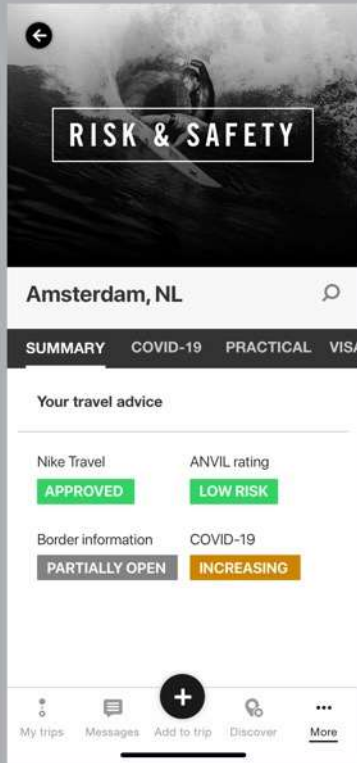


Consumer technology

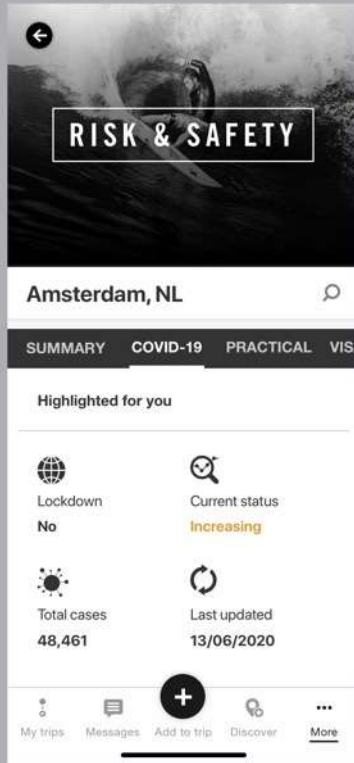


Data transparency

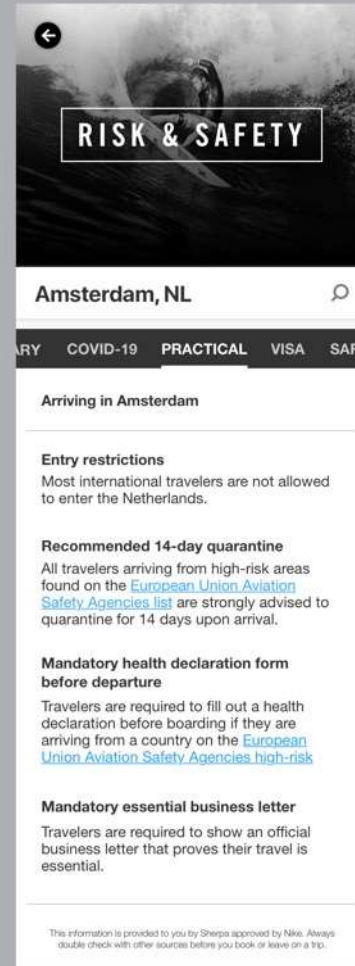
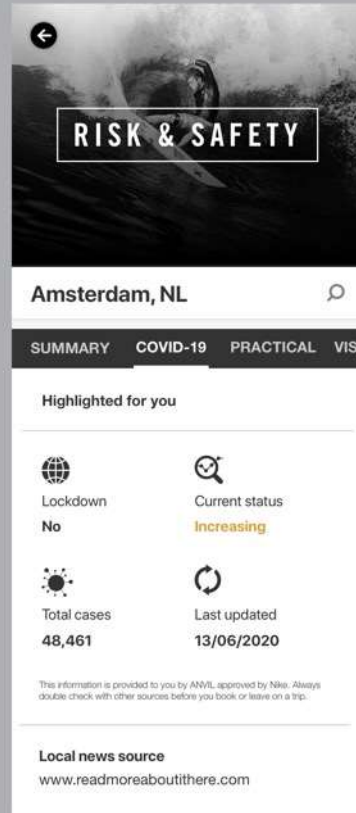
Risk & Safety Main features



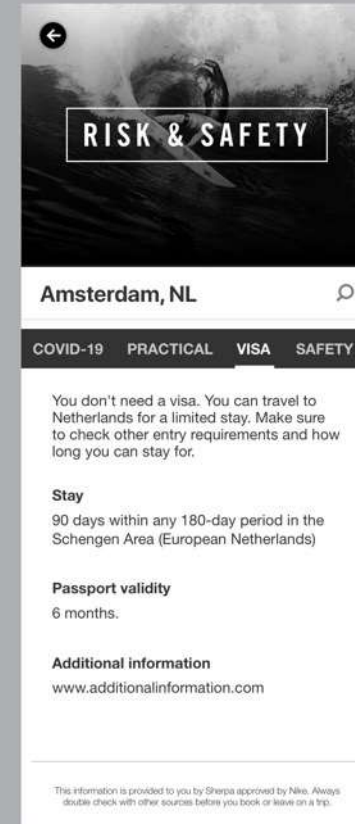
Country Risk
[Corporate control icw
iOS or WorldAware]



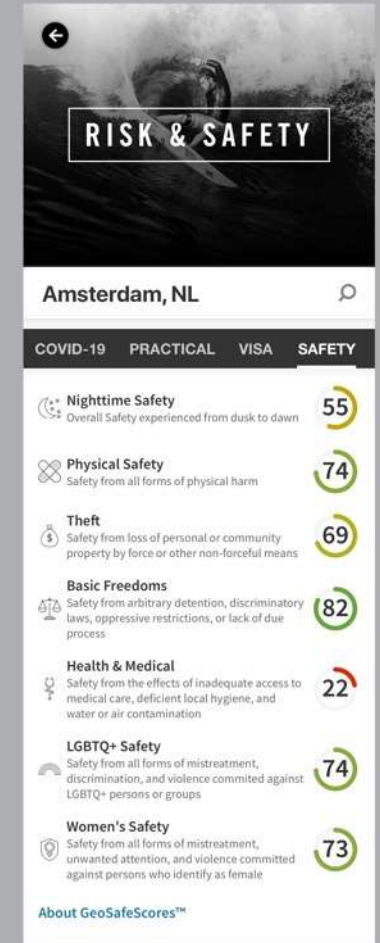
Latest Covid stats
[Sherpa, iOS and/or
WorldAware]



Entry Requirements
[Sherpa]

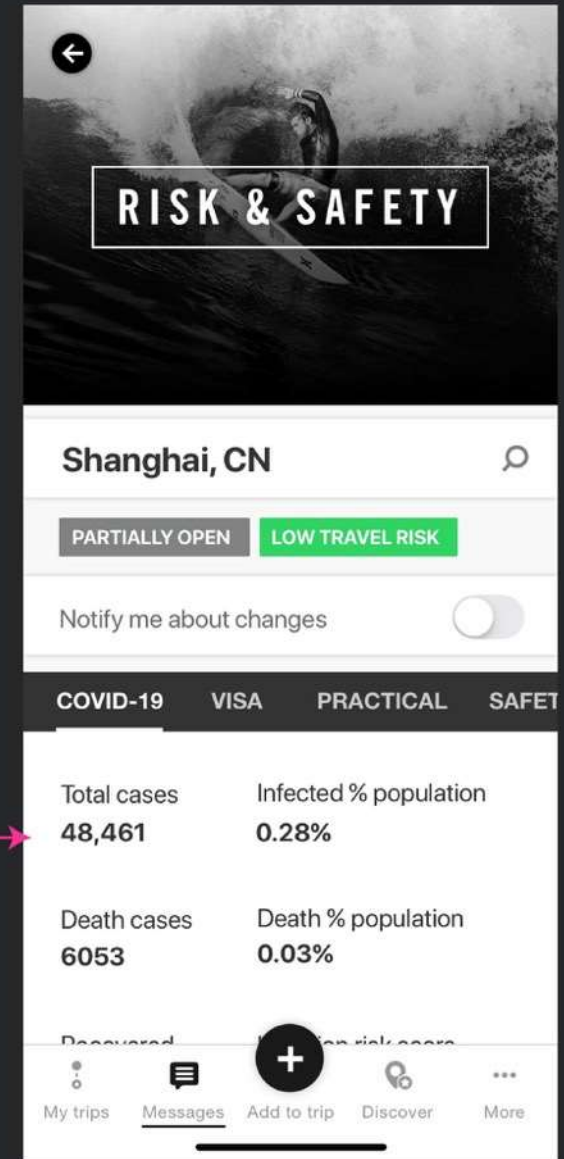


Visa Requirements
[Sherpa]



Local Safety - GeoSure

App - Risk & Safety Message Entry



roadmap•

Show you care



With roadmap•