

Network Storage Disk

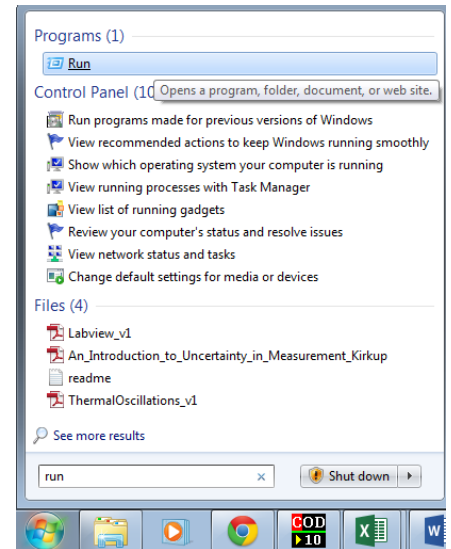
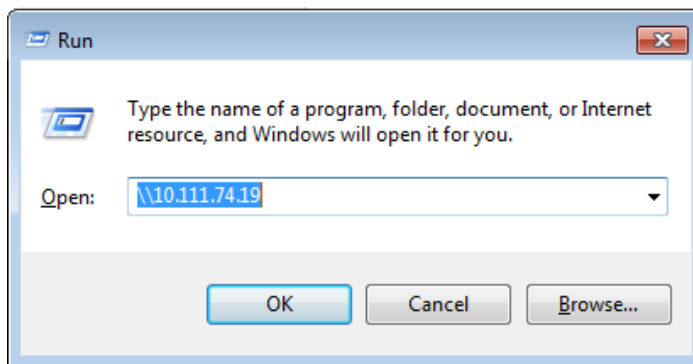
1. Open Your **Start Menu**

Type **RUN** in search

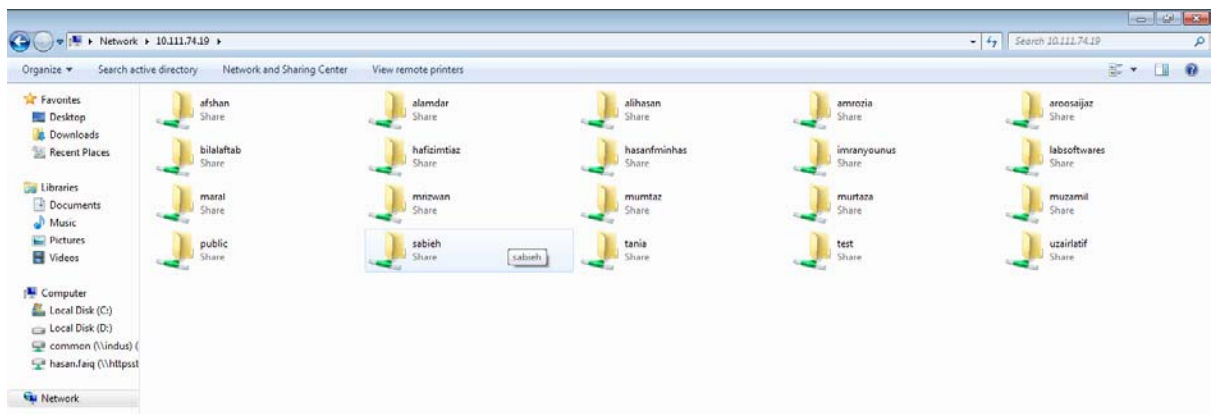
Click on the **Run** option

Type \\10.111.74.19

Click **OK**



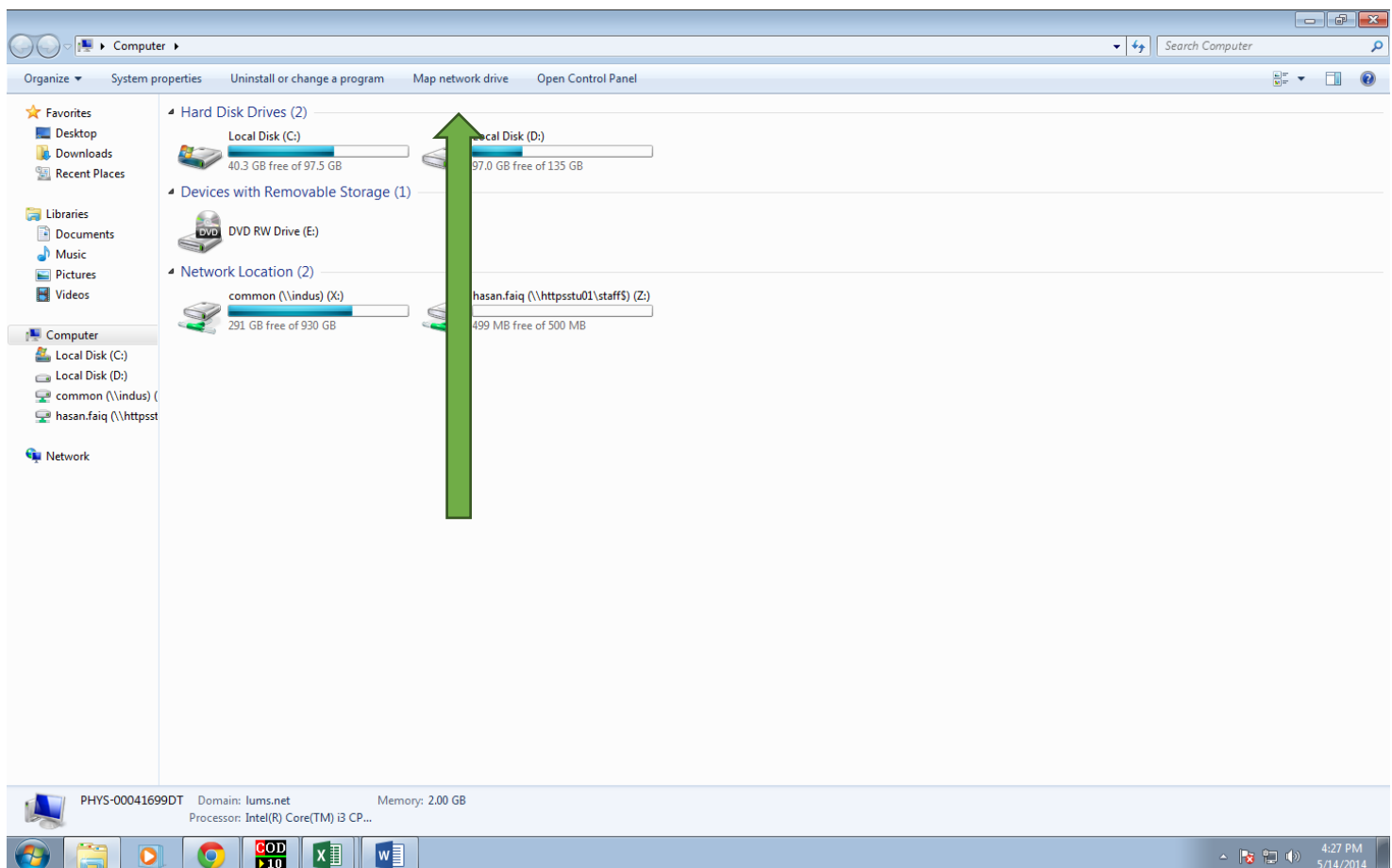
2. A Window will get opened like this:



3. Locate you **USERNAME**
4. Double Click on it.
5. Enter your **USERNAME** and **PASSWORD**
6. Enjoy the Terabyte Space.

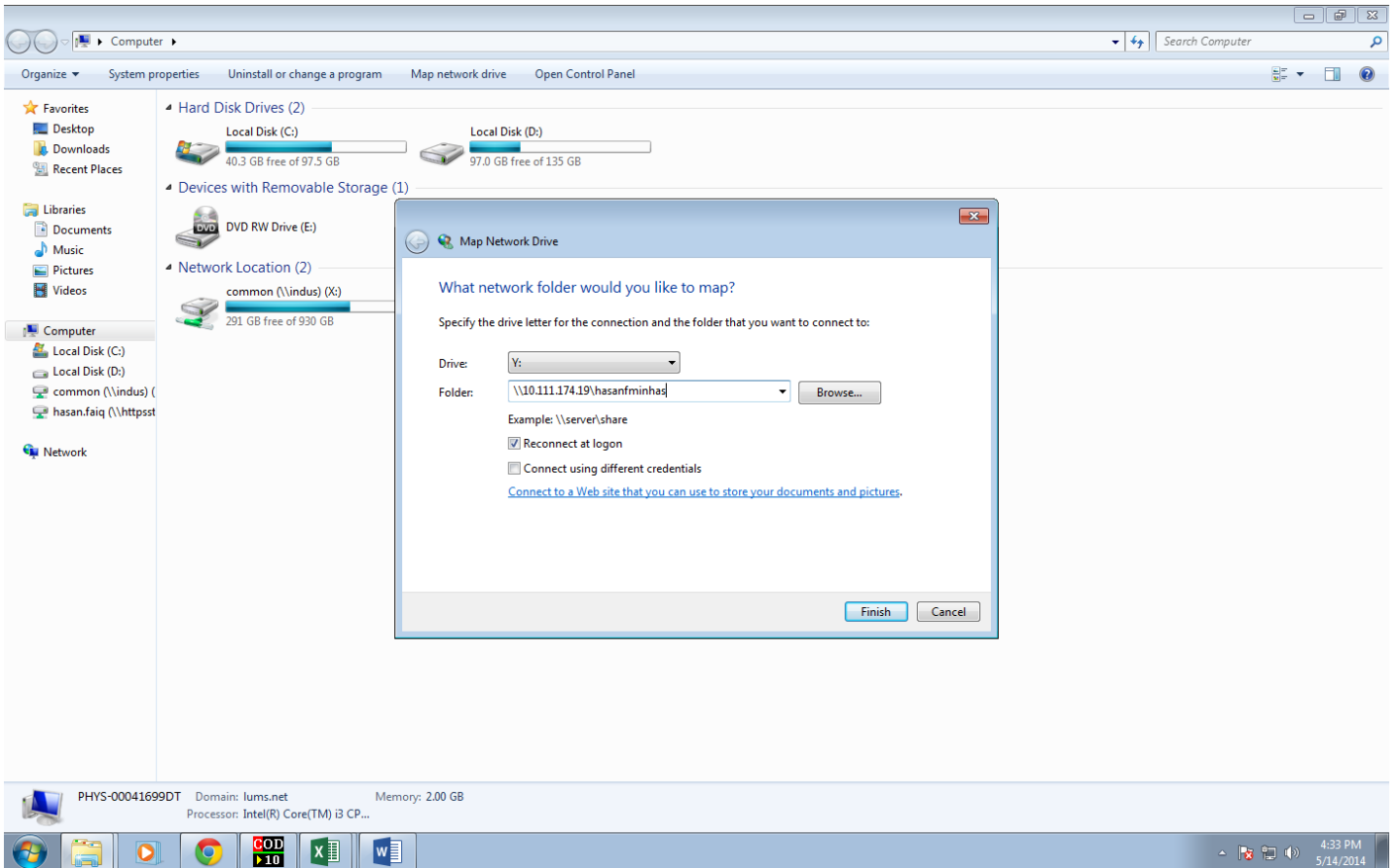
To make this Disk appear as a drive in My Computer, follow the following instructions

7. Open **My Computer**
8. Click on Map Network Device



9. You will be asked to provide the destination of your **FOLDER** in the network

10. Write \\10.111.174.19\USERNAME in the folder and press **FINISH**.



11. Now you can access your Disk easily.

