



FRITH PARK

REDWOOD TERRACE

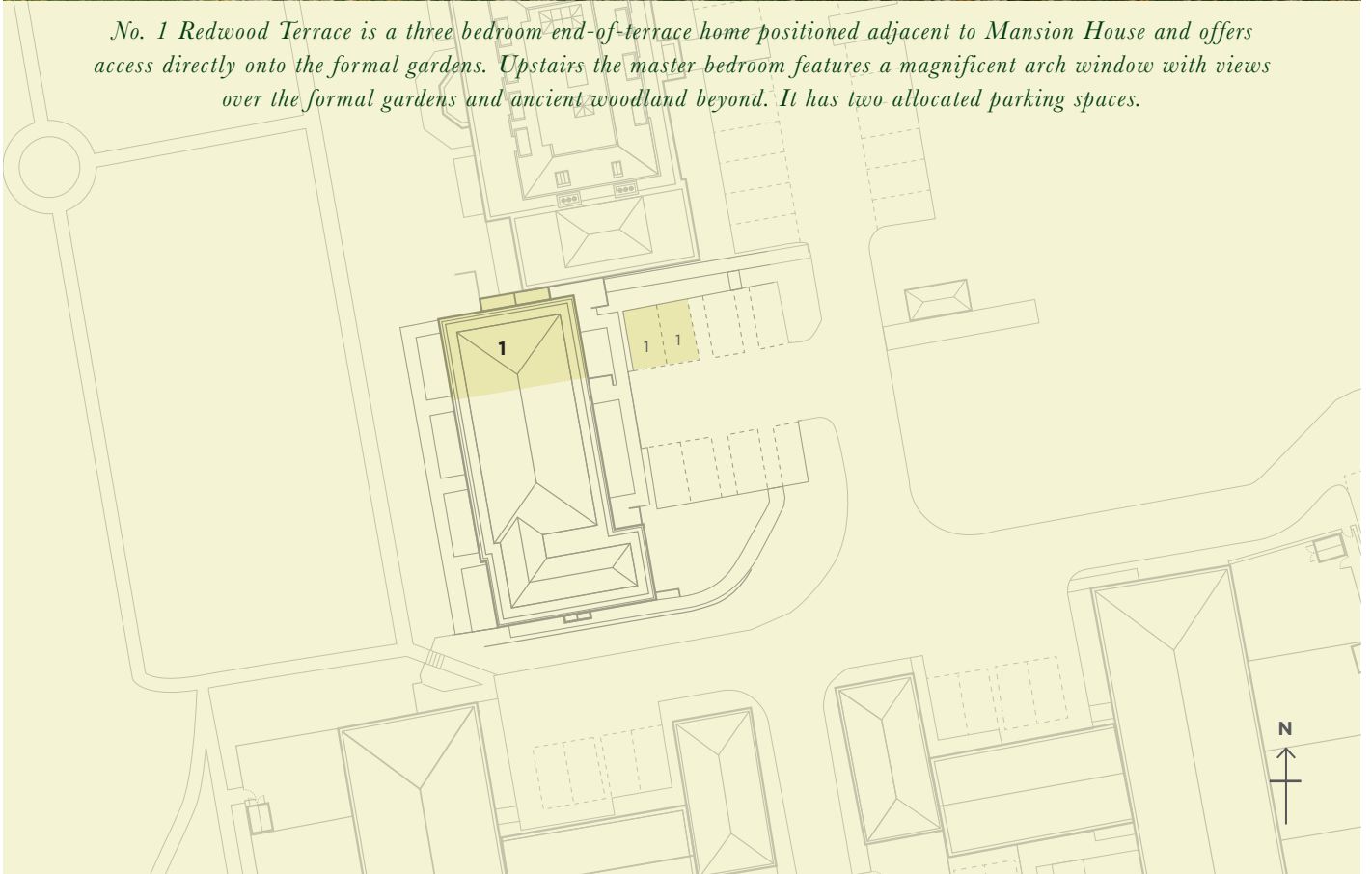
NO. 1

THREE BEDROOM END-OF-TERRACE HOME



Image shows the rear of Redwood Terrace overlooking the Formal Gardens

No. 1 Redwood Terrace is a three bedroom end-of-terrace home positioned adjacent to Mansion House and offers access directly onto the formal gardens. Upstairs the master bedroom features a magnificent arch window with views over the formal gardens and ancient woodland beyond. It has two allocated parking spaces.



REDWOOD TERRACE NO 1 THREE BEDROOM END-OF-TERRACE HOME

INTERIOR DECOR
Heather

The inside of this light and airy home offers a flexible and spacious living area. At the front overlooking the courtyard and parking area is a large kitchen with a cloakroom and a handy utility room. The living and dining area opens up onto the formal gardens via the level threshold bi-fold doors. Upstairs the master bedroom is dominated by the huge arched window that offers views over the formal gardens and onto the ancient woodland beyond. The master bedroom also offers an ensuite with a large shower and fitted wardrobes, whilst a family bathroom serves the other two bedrooms. The loft hatch gives access to the boarded loft complete with ladder and light.

GROUND FLOOR

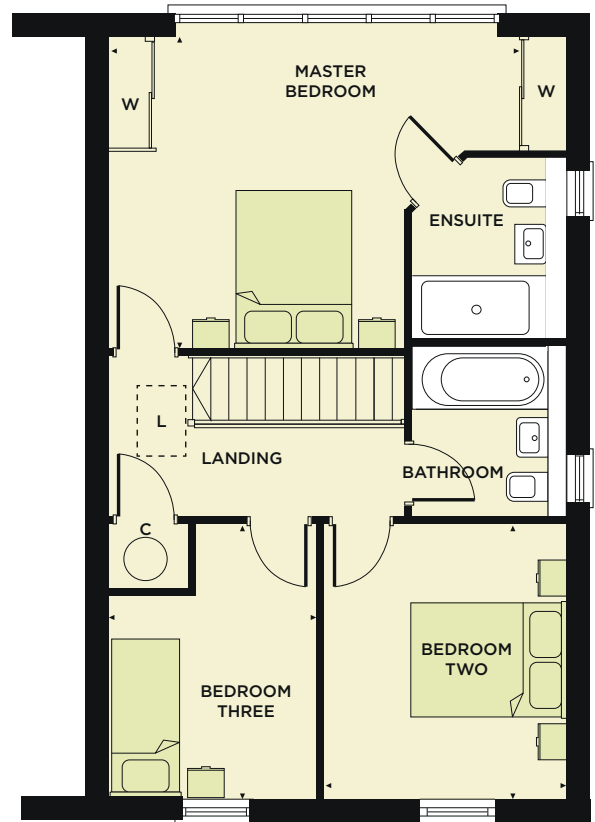
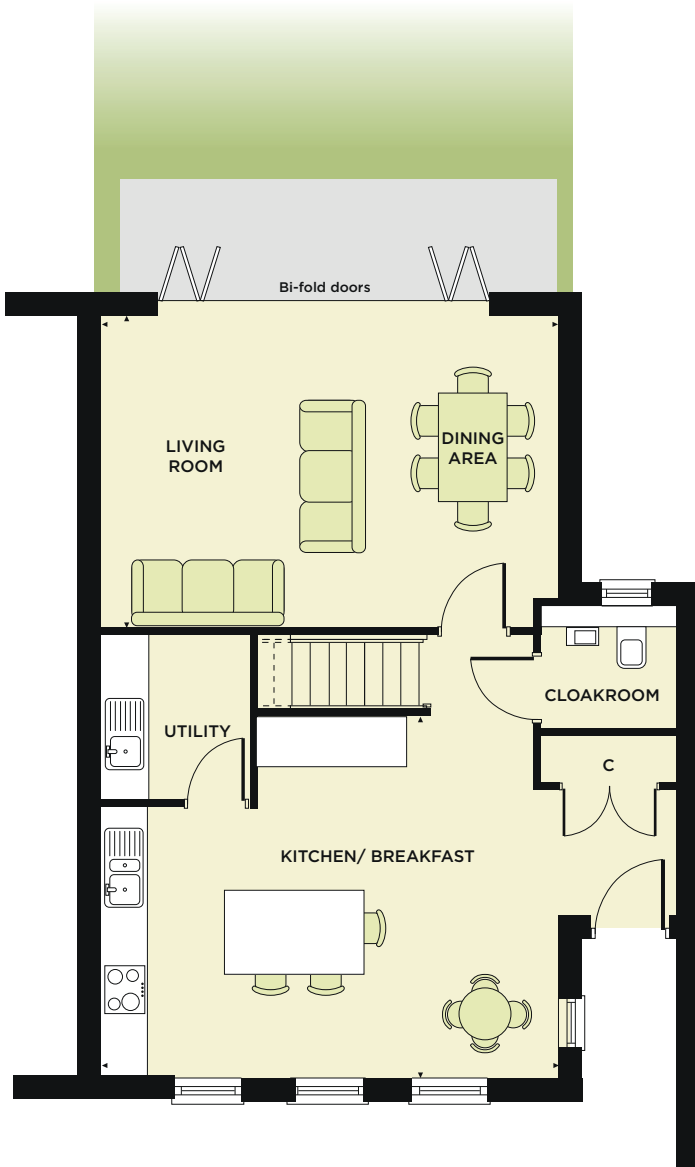
Living/dining area	5.83m	x	3.91m
	19' 01"	x	12' 10"
Kitchen/breakfast	5.83m	x	4.56m
	19' 01"	x	14' 11"

FIRST FLOOR

Master Bedroom	5.22m	x	3.91m
	17' 01"	x	12' 10"
Bedroom Two	3.40m	x	3.07m
	11' 02"	x	10' 01"
Bedroom Three	3.40m	x	2.63m
	11' 02"	x	8' 08"

TOTAL FLOOR AREA 113m² 1,217 ft²

PARKING No. 1 has two allocated parking spaces



KEY: C Cupboard W Fitted wardrobe L Loft hatch access to boarded loft area with ladder and light

This information is for guidance only. The dimensions given are subject to minor variations (+ or - 5%) and are not intended to be used for carpets sizes, appliance sizes or items of furniture. Furniture shown is not included and are shown as indicative only. Details contained here may change and should not be relied upon as statements of fact or representation and applicants must satisfy themselves by inspection or otherwise as to their correctness. This information does not constitute a contract or warranty.