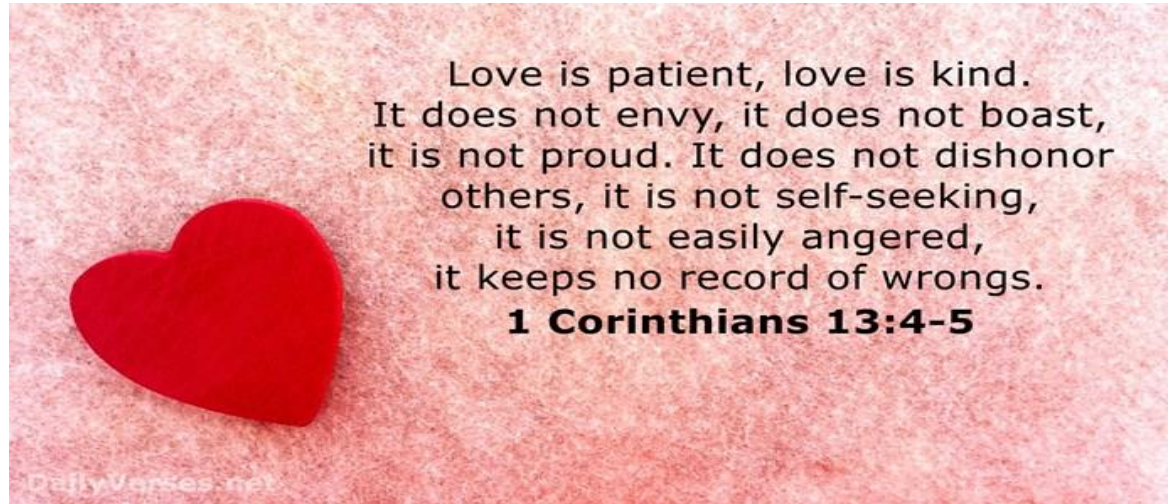


Tuesday 19th May 2020

SPAG

1. Practise this week's spelling words.

2. Read the instructions carefully and copy the sentences in your workbook



Can you unscramble these four prepositions of time?

Use the numbered letters to make another preposition word.

robefe _ _ _ _
 3

faetr _ _ _ _

nutil _ _ _ _
 1 4

satp _ _ _ _
 2

Now use the preposition you have made in a direct speech sentence.

a

Can you write a suitable prefix for these root words?

_____ regular

_____ correct

Can you use one of the words in a present perfect sentence?

b

Guided Reading

LO: To imagine how characters might react

Read *Messenger's Proclamation*.

- In the story this proclamation is read to Mufaro, Manyara and Nyasha.

How do you think they will react? If you were in the story, how would you react?

Messenger's Proclamation

The most worthy
and beautiful
daughters in the
land are invited to
appear before the
King, and he will
choose one to
become Queen!

Manyara's Journey

Read about Manyara's journey and decide what you would do.

That night when everyone was asleep, Manyara stole quietly out of the village. She had never been in the forest at night before and she was frightened, but her greed to be the first to appear before the king drove her on. In her hurry, she almost stumbled over a small boy who suddenly appeared, standing in the path.

The boy told her he was hungry and asked her politely for something to eat.

1. What would you do? Why?

After travelling for what seemed to be a great distance, Manyara came to a small clearing. There, silhouetted against the moonlight was an old woman seated on a large stone.

The woman gave advice. She told Manyara that she would see laughing trees but must not laugh in return. She told her that she would meet a man with his head under his arm and that she must be polite to him.

2. What would you say? Why?

Manyara came to the grove of trees and they did seem to laugh at her.

3. What would you do if the trees laughed at you? Why?



Later Manyara saw the man with head tucked under his arm.

4. What would you do? Why?

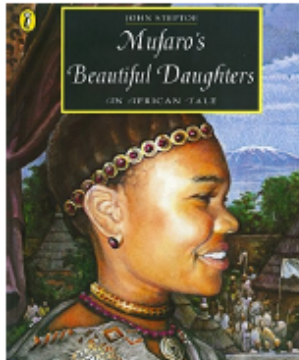
Listen to the whole story being read.

- Listen to this reading of the whole story.

<https://www.youtube.com/watch?v=dP9cQkS8p2Q&t=24s>

Story Questions

1. Were you surprised about how Manyara treated those she met?
Why/Why Not?
2. What did Manyara say about the monster that she saw?
3. How do you think Nyasha felt as she went into the chamber?
4. Why did Mufaro say that he was the happiest father in all the land, at the end of the story?



Writing

Think about the character of the King

Write notes around The King.

- What do we know about him from the story?
- What do you think about him?
- Was he fair?

The King



Maths

Warm Up:

1. $54 \div 6 =$

2. $463 \times 14 =$

3. $2.31 + 13.204 =$

4. _____ $= 98 \times 3$

5. $1 - 4/6 =$

Please continue to use the bbc bitesize link for alternative activities:

<https://www.bbc.co.uk/bitesize>

Learning Reminders

Find factors of numbers up to 40.

How many factors does **21** have?
Draw the different possible arrays for 21 counters.



3×7



1×21

21 has just **4 factors** in 2 pairs, 1 and 21 and 3 and 7.

Learning Reminders

Find factors of numbers up to 40.

Now try **16**.



$$1 \times 16$$



$$2 \times 8$$



$$4 \times 4$$

16 has **5 factors**, 1, 2, 4, 8 and 16.

4 is paired with itself so we don't have to count it twice.

Practice Sheet Mild

Matching factors

Match each number to its factors.

Add the number itself to the list of factors,

e.g. 15 has 15 as a factor, so 15 must be added to 1, 3 and 5.

Section A

15	3, 7, 1
6	2, 3, 1
21	3, 1, 5
10	2, 4, 3, 6, 12, 8, 1
12	1, 5, 2
24	2, 3, 4, 1, 6

Section B

22	2, 1, 6, 9, 3
31	3, 1
9	2, 11, 1
36	5, 1, 2, 3, 15, 6, 10
18	1
30	1, 4, 2, 18, 9, 3, 6, 12

Challenge

Most of the numbers you investigated had an even number of factors, but some had an odd number of factors.

I wonder what makes these numbers special?

Can you find any other numbers with an odd number of factors?

Challenge 😊

Practice Sheet Hot Matching factors

Match each number to its factors.

Add the number itself to the list of factors.

e.g. 15 has 15 as a factor, so 15 must be added to 1, 3 and 5.

Section C

34	1, 4, 2
4	2, 17, 1
16	3, 2, 4, 8, 12, 6, 16, 1, 24
39	4, 2, 1, 5, 10, 8, 20
48	3, 1, 13
40	8, 4, 1, 2
25	7, 1
49	4, 2, 16, 1, 8
32	1, 5

Challenge

Which has more factors: 99 or 100 or 101? Guess then test!

Let's think like scientists

Use these questions to develop research skills and speaking and listening:

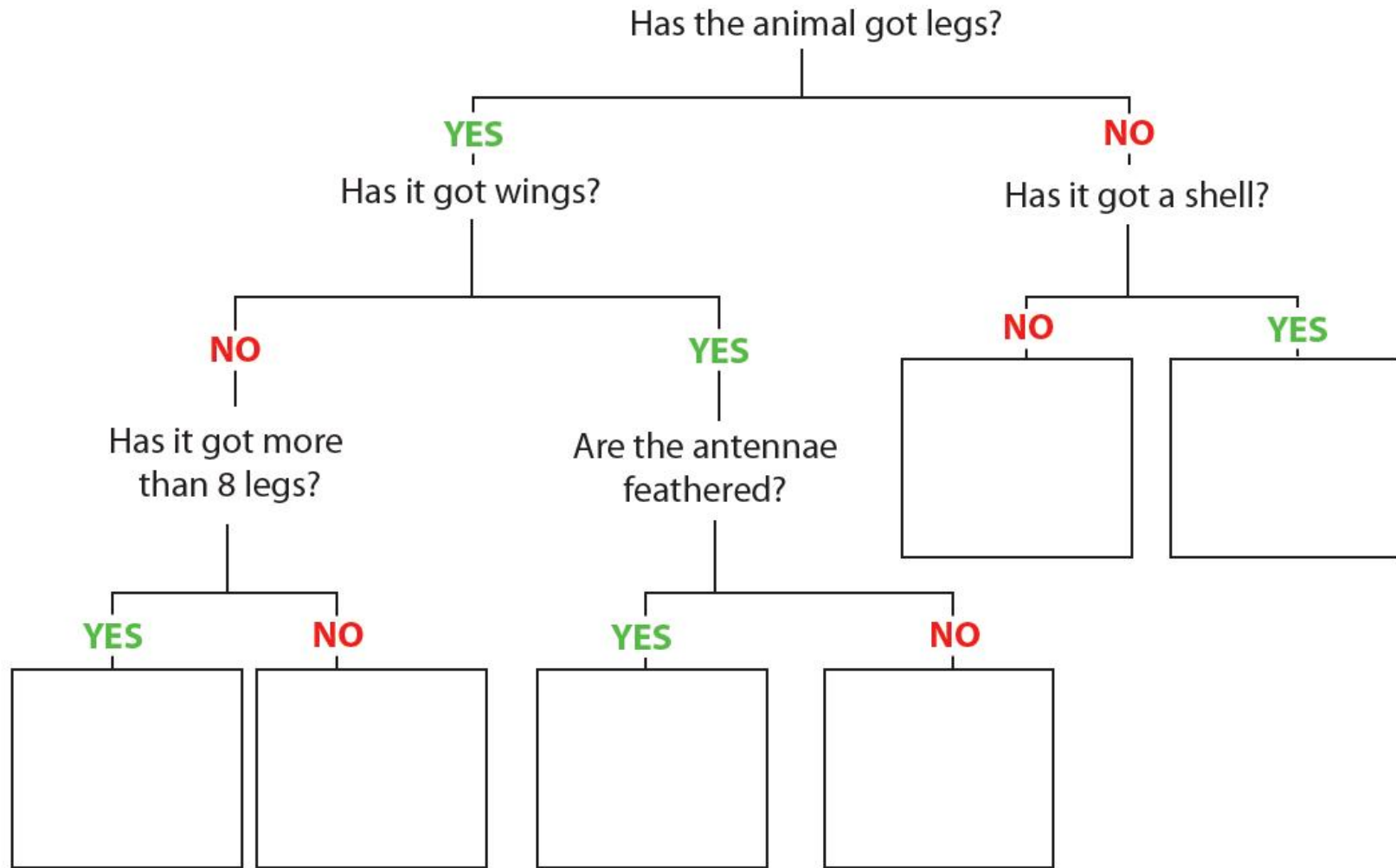
Can you find out why spiders aren't insects and explain it to the rest of your family?

Who was the first person to start classifying living things?

CLASSIFICATION KEYS:

<https://www.bbc.co.uk/bitesize/topics/zxjj6sg/articles/z9cbcwx>

WILF: Use a key to identify an animal or plant



Maths WarmUp answers:

- 1) 9
- 2) 449
- 3) 15.514
- 4) 294
- 5) $\frac{2}{6}$ or $\frac{1}{3}$

Practice Sheets Answers

Matching factors (mild)

Section A

15: 1, 3, 5, 15
6: 1, 2, 3, 6
21: 1, 3, 7, 21
10: 1, 2, 5, 10
12: 1, 2, 3, 4, 6, 12
24: 1, 2, 3, 4, 6, 8, 12, 24

Section B

22: 1, 2, 11, 22
31: 1, 31
9: 1, 3, 9
36: 1, 2, 3, 4, 6, 9, 12, 18, 36
18: 1, 2, 3, 6, 9, 18
30: 1, 2, 3, 5, 6, 10, 15, 30

Challenge

9 and 36 should be ringed. These are both square numbers.
For another number with an odd number of factors, accept any square number,
i.e. 1, 4, 16, 25, 49, 64, 81, 100 ...

Matching factors (hot)

Section C

34: 1, 2, 17, 34
4: 1, 2, 4
16: 1, 2, 4, 8, 16
39: 1, 3, 13, 39
48: 1, 2, 3, 4, 6, 8, 12, 16, 24, 48
40: 1, 2, 5, 8, 10, 20, 40
25: 1, 5, 25
49: 1, 7, 49
32: 1, 2, 4, 8, 16, 32

Challenge

100 has more factors than 99 or 101.

Can you unscramble these four prepositions of time?

a

Use the numbered letters to make another preposition word.

robefe before

upon

1 2 3 4

faetr after

Accept 'upon' in a direct speech sentence, e.g. "Once upon a time," the teacher began.

nutil until

satp past

Can you write a suitable prefix for these root words?

b

irregular

in or auto correct

Accept any present perfect sentence containing either 'incorrect', 'autocorrect' or 'irregular', e.g. We have all written the incorrect answer.