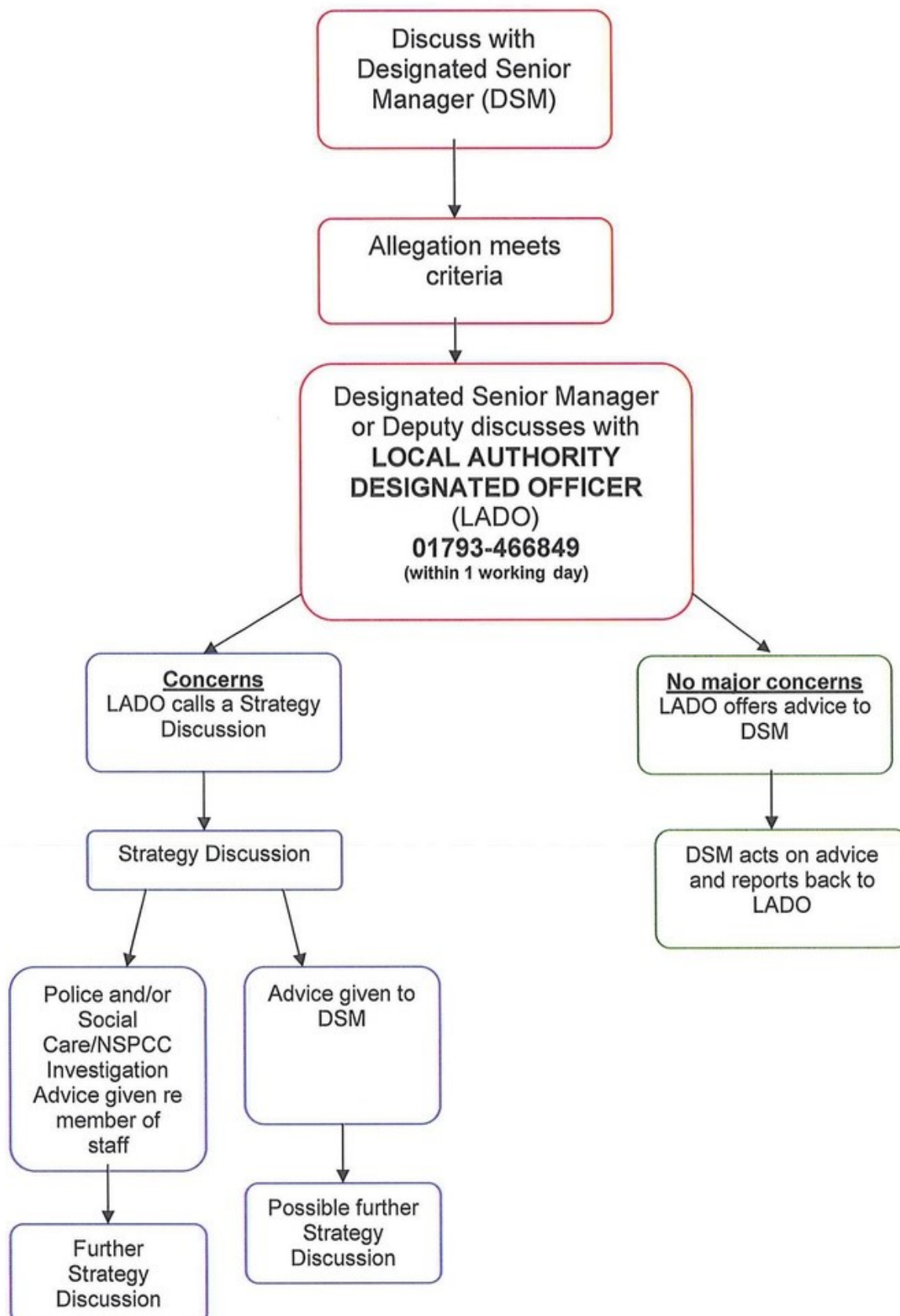


## Allegations against Staff Flowchart

(Please refer to [www.swcpp.org.uk](http://www.swcpp.org.uk) or [www.swindonlscb.org.uk](http://www.swindonlscb.org.uk) for more detailed guidance)

If you have a concern that a person who works with children and young people may have behaved inappropriately, or you have received information that may constitute an allegation you should:



DSM keeps their Named Senior Officer (NSO) informed of any allegation and any other appropriate member of staff