



Qnergy Machine Shop

Renewable. Reliable. Resilient.

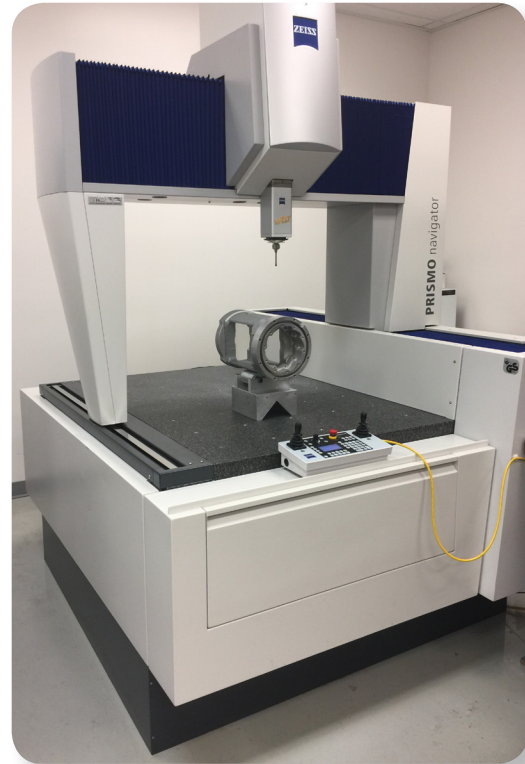
Fabrication and Assembly

A Qnergy Company

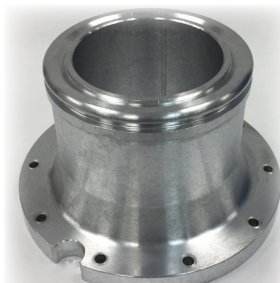
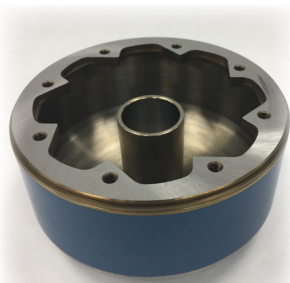
SERVICES/CAPABILITIES

- Competative cost/quotes
- Highly capable equipment
- Fully maintained (PM) and calibrated
- CMM Inspection capable
- Fast turnaround time
- Experienced Engineering/Design Team
- Quality Management System (QMS)
- Material/Product Traceability
- GD&T proficient
- Custom jobs (can outsource specific functions if not available)
- Heat treat capability
- Single, batch and high order volume
- Solidworks, Inventor, Fusion360
- Weld capable
- Over 22 years machinist experience (aerospace, alternate power supply, tool & die, custom fabrication, prototyping, production, repair/restoration)

Precise and Accurate Quality Machining



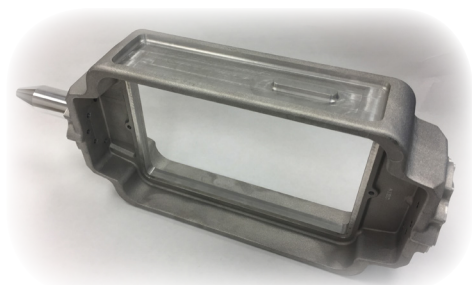
Zeiss Prismo Navigator CMM
(accurate up to 0.009 mm)



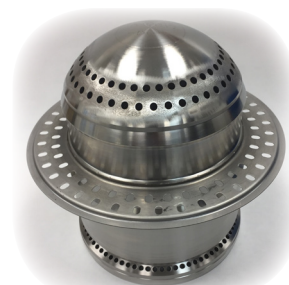
Equipment	Type	Capability
Manual Lathes	Monarch 10 EE	0.0625" - 18"
	Clausing Colchester 15" x 40"	
	Clausing Colchester 18" x 60"	
CNC Lathes	Gildemesiter CTX 400	up to 6" OD x 24" Length
	Gildemeister CTX 500 (turning center)	up to 15" OD x 36" Length off center milling and drilling
Manual Milling	Bridgeport Milling Machine	2 1/2 axis CNC control
	Bridgeport Milling Machine	
CNC Milling	Kitamura CNC Mycenter 3xi	high speed spindle through the tool coolant envelope: x(736mm), y(431.8mm), z(457.2mm), 4 axis capability
Band Saw	Kalamazoo	Horizontal
	DO ALL	Vertical

Inspection Equipment:

Zeiss Prismo Navigator CMM, Mitutoyo RA-2100 Roundness Machine, Federal Mahr Air Gaging, Z-Cal Height Gage, Keyence VHX-1000 Digital Microscope, OGP Smartscope, Zeiss Axiovert 40 MAT Microscope, Micrometers, Bore Gages, Surface Roughness, Film Thickness, HALT/HASS Test Equipment



www.qnergy.com
300 West 12th Street
Ogden, UT 84404
P: (801) 752-0100



brad.hogan@qnergy.com
P: (801) 725-0924
ryan.reinhold@qnergy.com
P: (801) 720-0394

