

ORSI® Legacy systems spare parts & repairs

ORSI PMC Series 10

ORSI PMC Series 5

ORSI PMC Series 8

ORSI PMC Series 15/86 and 15/386

ORSI PMC Series 20

ORSI Open-PMC xx1, xx2, xx3, xx4

ORSI T-Boards modules

ARCNET equipment

ORSI CUBE workstation parts

Legacy workstation replacement

ORSI PMC SERIES 10—PARTS CATALOG

- ◇ MOD.CP12.078 - CP12 C256 D2 (RAM) RS232 SERIAL PORTS
- ◇ MOD.CP12.178 - CP12 C256 D2 (RAM) RS422 SERIAL PORTS
- ◇ MOD.CP12.079 - CP12 C256 T2 (RAM + EPROM ITERPAN) RS232 PORTS
- ◇ MOD.CP12.179 - CP12 C256 T2 (RAM + EPROM ITERPAN) RS422 PORTS
- ◇ MOD.CP12.077 - CP12 C192 DT2 (RAM+EPROM ITERPAN) RS232 PORTS
- ◇ MOD.CP12.177 - CP12 C192 DT2 (RAM+EPROM ITERPAN) RS422 PORTS
- ◇ MOD.CP12.053 - CP12 A128 (RAM + EPROM ITERPAN) RS232 SERIAL PORTS
- ◇ MOD.CP12.153 - CP12 A128 (RAM + EPROM ITERPAN) RS422 SERIAL PORTS
- ◇ MOD.CP12.054 - CP12 A256T (EPROM + EPROM ITERPAN) RS232 PORTS
- ◇ MOD.CP12.154 - CP12 A256T (EPROM + EPROM ITERPAN) RS422 PORTS
- ◇ MOD.CP12.076 - CP12 C128 (RAM + EPROM ITERPAN) RS232 SERIAL PORTS
- ◇ MOD.CP12.176 - CP12 C128 (RAM + EPROM ITERPAN) RS422 SERIAL PORTS
- ◇ MOD.CP12.073 - CP12 C256 (RAM + EPROM ITERPAN) RS232 SERIAL PORTS
- ◇ MOD.CP12.173 - CP12 C256 (RAM + EPROM ITERPAN) RS422 SERIAL PORTS
- ◇ MOD.CP12.074 - CP12 C256E (RAM) RS232 SERIAL PORTS
- ◇ MOD.CP12.174 - CP12 C256E (RAM) RS422 SERIAL PORTS
- ◇ MOD.CP12.075 - CP12 C256EI (RAM + EPROM ITERPAN) RS232 SERIAL PORTS
- ◇ MOD.CP12.175 - CP12 C256EI (RAM + EPROM ITERPAN) RS422 SERIAL PORTS

- ◇ MOD.CP12.175 - CP12 C256EI (RAM + EPROM ITERPAN) RS422 SERIAL PORTS
- ◇ MOD.MPS3.001 - POWER SUPPLY UNIT PS3 @ 220VAC
- ◇ MOD.MPS3.091 - POWER SUPPLY UNIT PS3 @ 110VAC
- ◇ MOD.MPS2A.001 - POWER SUPPLY UNIT PS2A @ 220VAC
- ◇ MOD.MPS2A.091 - POWER SUPPLY UNIT PS2A @ 110VAC
- ◇ MOD.MCPS.101 - POWER SUPPLY CONTROLLER UNIT MCPS @ 220VAC
- ◇ MOD.MCPS.191 - POWER SUPPLY CONTROLLER UNIT MCPS @ 110VAC

ORSI PMC SERIES 5—PARTS CATALOG

- ◇ MOD.PMC5.501 - SERIES 5 - C128 (220Vac)
- ◇ MOD.RACK.116 - SERIES 5 T-RACK + 9 FRONT END MODULES

ORSI PMC SERIES 8—PARTS CATALOG

- ◇ MOD.CPU8.501 - CP8-86 - C256 RS232 SERIAL PORTS
- ◇ MOD.PSU8.501 - POWER SUPPLY UNIT PS8 220VAC
- ◇ MOD.PSU8.591 - POWER SUPPLY UNIT PS8 110VAC
- ◇ MOD.RK08.501 - RACK FOR PMC SERIES 8

ORSI PMC SERIES 15/86 AND 15/386—PARTS CATALOG

- ◇ MOD.CP15.401 - CP15/86 C256
- ◇ MOD.CP15.501 - CP15/386 C448
- ◇ MOD.PS15.501 - POWER SUPPLY UNIT PS15
- ◇ MOD.PC15.501 - PCS15 FOR SINGLE SYS. & SEPARATE I/O BKUP SYSTEM
- ◇ MOD.PC15.502 - PCS15 FOR SHARED I/O SYSTEM
- ◇ MOD.RK15.503 - PS-RACK 15 (220VAC)
- ◇ MOD.RK15.593 - PS-RACK 15 (110VAC)
- ◇ MOD.RK15.504 - PS-RACK 15/2 (220VAC)
- ◇ MOD.RK15.594 - PS-RACK 15/2 (110VAC)
- ◇ MOD.RK15.501 - RACK FOR 14 SYSTEM MODULES
- ◇ MOD.RK15.502 - RACK FOR CPU IN BACKUP (2x7 SYSTEM MODULES)
- ◇ KIT.CV15.001 - CABLES FOR POWER SUPPLY & PS/SYS RACKS
- ◇ KIT.CV15.002 - CABLES FOR EXPANSION RACK TO SYS/PS RACK
- ◇ KIT.CV15.003 - 15/86 CABLES FOR MIX AND SHARED I/O BACKUP
- ◇ KIT.CV15.305 - 15/86 SET FULL BKP WITH 3 SUB CABINET
- ◇ KIT.CV15.405 - 15/86 SET FULL BKP WITH 4 SUB CABINET



- ◇ KIT.CV15.605 - 15/86 SET FULL BKP WITH 6 SUB CABINET
- ◇ KIT.CV15.705 - 15/86 SET FULL BKP WITH 7 SUB CABINET
- ◇ KIT.CV15.004 - 15/386 CABLES FOR MIX AND SHARED I/O BACKUP
- ◇ KIT.CV15.306 - 15/386 SET FULL BKP WITH 3 SUB CABINET
- ◇ KIT.CV15.406 - 15/86 SET FULL BKP WITH 4 SUB CABINET
- ◇ KIT.CV15.606 - 15/86 SET FULL BKP WITH 6 SUB CABINET
- ◇ KIT.CV15.706 - 15/86 SET FULL BKP WITH 7 SUB CABINET

ORSI PMC CP16 — PARTS CATALOG

- ◇ MOD.CP16.201 – MODULE CP16/D (FOR ROCKWELL PLC/5 RACKS)

ORSI PMC SERIES 20 — PARTS CATALOG

- ◇ MOD.CP20.501 - CP20-C448
- ◇ MOD.PS20.501 – POWER SUPPLY UNIT PS20
- ◇ MOD.PC20.501 – POWER SUPPLY UNIT CONTROLLER PCS20
- ◇ MOD.RK20.503 - PS RACK 20
- ◇ MOD.RK20.504 - PSRACK 20/2
- ◇ MOD.RK20.501 - CP RACK 20
- ◇ MOD.RK20.503 - PS RACK 20
- ◇ MOD.RK20.502 - CP RACK 20/2
- ◇ MOD.RK20.590 - CP-PS RACK 20
- ◇ MOD.COM2.501 - COMM2/P WITH ONE PROFIBUS INTERFACE
- ◇ MOD.COM2.502 - COMM2/PP WITH TWO PROFIBUS INTERFACES
- ◇ KIT.CV20.001 - NON REDUNDANT CABLE SET
- ◇ KIT.CV20.002 - COMPACT NO REDUNDANT CABLE SET
- ◇ KIT.CV20.003 - REDUNDANT CABLE SET
- ◇ KIT.CV20.004 - COMPACT REDUNDANT CABLE SET
- ◇ KIT.CV20.005 - COMPACT REDUNDANT CABLE SET FOR REDUNDANT PS

ORSI PMC VARIOUS MODULES — PARTS CATALOG

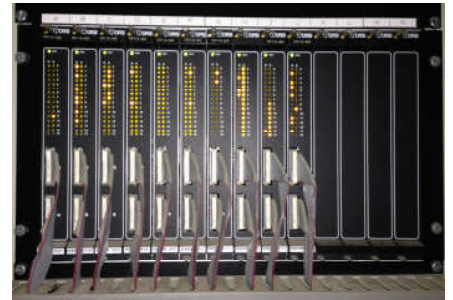
- ◇ MOD.NET1.501 - NET1-1 WITH ONE ARCNET PORT (COAX)
- ◇ MOD.NET2.502 - NET1-2 WITH TWO ARCNET PORTS (COAX)
- ◇ MOD.IOP2.501 - IOP2 FRONT-END INTERFACE MODULE

- ◇ MOD.SER2.501 - SER2-A128 (4 PORTS RS232)
- ◇ MOD.SER2.502 - SER2-A128 (4 PORTS RS422)
- ◇ MOD.SER2.503 - SER2-A128 (4 PORTS CURRENT LOOP)
- ◇ MOD.SER2.504 - SER2-A128 (2 PORTS RS232 - 2 PORTS RS422)
- ◇ MOD.SER2.505 - SER2-A128 (2 PORTS RS232 - 2 PORTS CURRENT LOOP)
- ◇ MOD.SER2.506 - SER2-A128 (2 PORTS RS422 - 2 PORTS CURRENT LOOP)
- ◇ MOD.SER2.511 - SER2-A512 (4 PORTS RS232)
- ◇ MOD.SER2.512 - SER2-A512 (4 PORTS RS422)
- ◇ MOD.SER2.513 - SER2-A512 (4 PORTS CURRENT LOOP)
- ◇ MOD.SER2.514 - SER2-A512 (2 PORTS RS232 - 2 PORTS RS422)
- ◇ MOD.SER2.515 - SER2-A512 (2 PORTS RS232 - 2 PORTS CURRENT LOOP)
- ◇ MOD.SER2.516 - SER2-A512 (2 PORTS RS422 - 2 PORTS CURRENT LOOP)
- ◇ MOD.RACK.515 - T-RACK FOR FRONT END MODULES
- ◇ MOD.RIOP.503 - RIOP1/F 7R CHANNEL + 7S CHANNEL
- ◇ MOD.RIOP.504 - RIOP2/FF 14R CHANNEL + 14S CHANNEL
- ◇ CBL.0245.001 - R CONNECTOR CONNECTION FLAT CABLE
- ◇ CBL.0246.001 - S CONNECTOR CONNECTION FLAT CABLE
- ◇ MOD.IORK.501 - RIOP RACK

ORSI PMC T-BOARD MODULES — PARTS CATALOG

DIGITAL INPUT MODULES

- ◇ MOD.IP11.520 - TIP11A - 24I (CH-CH, CH-SYS INSOLATION)
- ◇ MOD.IP11.521 - TIP11A - 24C (CH-SYSTEM INSOLATION)
- ◇ MOD.IP11.530 - TIP11A - 48I (CH-CH, CH-SYS INSOLATION)
- ◇ MOD.IP11.531 - TIP11A - 48C (CH-SYSTEM INSOLATION)
- ◇ MOD.IP11.540 - TIP11A - 110I (CH-CH, CH-SYS INSOLATION)
- ◇ MOD.IP11.541 - TIP11A - 110C (CH-SYSTEM INSOLATION)
- ◇ MOD.IP12.510 - TIP12A, 32 DIGITAL INPUTS 24VDC (CH-SYSTEM INSOLATION)
- ◇ MOD.IP12.511 - TIP12AM, 32 DIGITAL INPUTS 24VDC (WITH MUX 4/8 LEVEL)



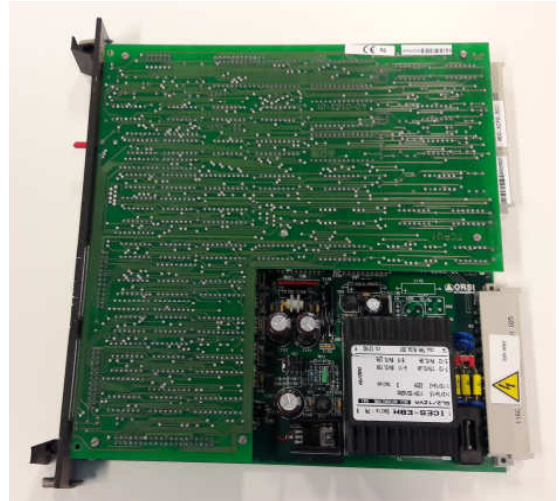
DIGITAL OUTPUT MODULES

- ◇ MOD.RL11.501 - TRL11, MODULE WITH 16 RELAYS OUTPUTS (SPDT)
- ◇ MOD.RL12.501 - TRL12, MODULE WITH 32 RELAYS OUT 24Vac/Vdc VAR.
- ◇ MOD.RL12.502 - TRL12, MODULE WITH 32 RELAYS OUT 110Vac/Vdc VAR.
- ◇ MOD.OP12.510 - TOP12A, SOLID STATE MODULE @ 24Vdc/255mA
- ◇ MOD.OP12.511 - TOP12AM, SOLID STATE MODULE @ 24Vdc/255mA + 8 MUX



ANALOG INPUT MODULES

- ◇ MOD.AIP2.501 - TAIP2A-T @ 220VAC
- ◇ MOD.AIP2.591 - TAIP2A-T @ 110VAC
- ◇ MOD.AIP2.241 - TAIP2A-T @ 24VDC
- ◇ MOD.AIP2.502 - TAIP2A-C @ 220VAC
- ◇ MOD.AIP2.592 - TAIP2A-C @ 110VAC
- ◇ MOD.AIP2.242 - TAIP2A-C @ 24VDC
- ◇ MOD.AIP1.512 - TAIP1A-T @ 110 OR 220V
- ◇ MOD.AIP1.511 - TAIP1A-T @ 24VDC
- ◇ MOD.AIP1.522 - TAIP1A-C @ 110 OR 220V
- ◇ MOD.AIP1.521 - TAIP1A-C @ 24VDC

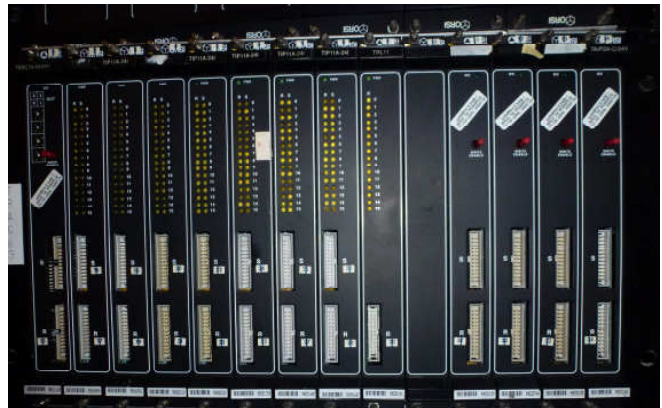


ANALOG OUTPUT MODULES

- ◇ MOD.AOP2.502 - TAOP2-T @ 220VAC
- ◇ MOD.AOP2.592 - TAOP2-T @ 110VAC
- ◇ MOD.AOP2.242 - TAOP2-T @ 24VDC
- ◇ MOD.AOP2.501 - TAOP2-C @ 220VAC
- ◇ MOD.AOP2.591 - TAOP2-C @ 110VAC
- ◇ MOD.AOP2.241 - TAOP2-C @ 24VDC

COUNTER-ENCODER INPUT MODULES

- ◇ MOD.ENC1.241 - TENC1A-5 - 5VDC @ 24VDC
- ◇ MOD.ENC1.501 - TENC1A-5 - 5VDC @ 220VAC
- ◇ MOD.ENC1.591 - TENC1A-5 - 5VDC @ 110VAC
- ◇ MOD.ENC1.242 - TENC1A-24 - 24VDC @ 24VDC
- ◇ MOD.ENC1.502 - TENC1A-24 - 24VDC @ 220VAC
- ◇ MOD.ENC1.592 - TENC1A-24 - 24VDC @ 110VAC



ORSI PMC PART REPAIR REQUEST

DEFECTIVE PART

Part Number _____

Part Description _____

Serial Number _____

PROBLEM DESCRIPTION

REQUESTED BY

Company /Plant _____

Reference Person _____

Date _____

DELIVERY ADDRESS

JPE|SERVICES

300 Allston Street, Suite 401
Brighton, MA 02135 (USA)

Contact PIETRO PACI

Phone: +1 617-970-4993

Phone: +39 347-9959144

Email: pietro.paci@jpe-services.com

ORSI SPARE / REPLACEMENT PART REQUEST

REQUESTED PART

Part Number _____

Part Description _____

REQUESTED PART CONDITION

- ◇ Used "as it is" condition
- ◇ Used with functional tests
- ◇ Refurbished
- ◇ New

REQUESTED BY

Company /Plant _____

Reference Person _____

Date _____

DELIVERY ADDRESS

JPE|SERVICES

300 Allston Street, Suite 401
Brighton, MA 02135 (USA)

Contact PIETRO PACI

Phone: +1 617-970-4993

Phone: +39 347-9959144

Email: pietro.paci@jpe-services.com