



Certificate of Analysis

QA SAMPLE - INFORMATIONAL ONLY

1 of 3

ICAL ID: 20190501-096
Sample: 1905ICA2081.6183
Nutr - 1.0 oz unflavored 750mg
Strain: Nutr - 1.0 oz unflavored 750mg
Category: Ingestible

GMP Global Nutrition Inc.
Lic. #
13653 Central Ave.
Chino, CA 91710
Lic. #

Batch#:
Primary Size:
Total/Batch Size:
Collected: 05/06/2019; Received: 05/06/2019
Completed: 05/06/2019

Moisture NT	$\Delta 9$ -THC 32.55 mg/unit	CBD 881.13 mg/unit	Total Cannabinoids 1,000.21 mg/unit	Total Terpenes NT
Water Activity NT				

Summary	SOP Used	Date Tested	
Batch			Pass
Cannabinoids	SOP:003Tincture		Complete
Microbials	SOP:qpcrone	05/03/2019	Pass
Heavy Metals	SOP:HM001	05/02/2019	Pass



Scan to see results

Cannabinoid Profile

1 Unit = bottle, 30.63 g.

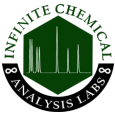
Analyte	LOQ	LOD	%	mg/g	mg/unit	Analyte	LOQ	LOD	%	mg/g	mg/unit
THCa	0.78	0.47	ND	ND	ND	CBDV	0.78	0.47	0.028	0.28	8.70
$\Delta 9$ -THC	0.78	0.47	0.106	1.06	32.55	CBN	0.78	0.47	0.010	0.10	2.97
$\Delta 8$ -THC	0.78	0.47	ND	ND	ND	CBGa	0.78	0.47	ND	ND	ND
THCV	0.78	0.47	<1	<1	<1	CBG	0.78	0.47	0.042	0.42	12.74
CBDa	0.78	0.47	ND	ND	ND	CBC	0.78	0.47	0.203	2.03	62.11
CBD	0.78	0.47	2.877	28.77	881.13	Total THC			0.106	1.06	32.55
						Total CBD			2.877	28.77	881.13
						Total			3.265	32.65	1000.21

Total THC=THCa * 0.877 + d9-THC; Total CBD = CBDa * 0.877 + CBD; NR= Not Reported, ND= Not Detected, *Reported by Dry Mass*; *analytical instrumentation used Cannabinoids:UHPLC-DAD, Moisture:Mass by Drying, Water Activity:Water Activity Meter, Foreign Material:Microscope*

Terpene Profile

Analyte	LOQ	LOD	%	mg/g	Analyte	LOQ	LOD	%	mg/g
---------	-----	-----	---	------	---------	-----	-----	---	------

NR= Not Reported thus no analysis was performed, ND= Not Detected thus the concentration is less then the Limit of Quantification (LOQ), *analytical instrumentation used:HS-GC-FID-FID*



Infinite Chemical Analysis Labs
8380 Miramar Mall #102
San Diego, CA
(858) 623-2740
www.infiniteCAL.com
Lic# C8-18-0000019-TEMP

Josh M Swider
Josh Swider
Lab Director, Managing Partner
05/06/2019

Confident Cannabis
All Rights Reserved
support@confidentcannabis.com
(866) 506-5866
www.confidentcannabis.com



This product has been tested by Infinite Chemical Analysis, LLC using valid testing methodologies and a quality system as required by state law. All LQC samples were performed and met the prescribed acceptance criteria in 16 CCR section 5730, pursuant to 16 CCR section 5726(e)(13). Values reported relate only to the product tested. Infinite Chemical Analysis, LLC makes no claims as to the efficacy, safety or other risks associated with any detected or non-detected levels of any compounds reported herein. This Certificate shall not be reproduced except in full, without the written approval of Infinite Chemical Analysis, LLC.



Certificate of Analysis

QA SAMPLE - INFORMATIONAL ONLY

2 of 3

ICAL ID: 20190501-096
Sample: 1905ICA2081.6183
Nutr - 1.0 oz unflavored 750mg
Strain: Nutr - 1.0 oz unflavored 750mg
Category: Ingestible

GMP Global Nutrition Inc.
Lic. #
13653 Central Ave.
Chino, CA 91710
Lic. #

Batch#:
Primary Size:
Total/Batch Size:
Collected: 05/06/2019; Received: 05/06/2019
Completed: 05/06/2019

Residual Solvent Analysis

Category 1 LOQ LOD Limit Status Category 2 LOQ LOD Limit Status Category 2 LOQ LOD Limit Status

NR= Not Reported thus no analysis was performed, ND= Not Detected thus the concentration is less then the Limit of Quantification (LOQ), *analytical instrumentation used=HS-GC-FID-FID*

Heavy Metal Screening

		LOQ	LOD	Limit	Status
	µg/g	µg/g	µg/g	µg/g	
Arsenic	ND	0.1	0.05	1.5	Pass
Cadmium	ND	0.1	0.05	0.5	Pass
Lead	0.117	0.1	0.05	0.5	Pass
Mercury	ND	0.1	0.05	3	Pass

NR= Not Reported thus no analysis was performed, ND= Not Detected thus the concentration is less then the Limit of Quantification (LOQ), *analytical instrumentation used:ICP-MS*

Microbiological Screening

	Result	Status
Aspergillus flavus	NR	NT
Aspergillus fumigatus	NR	NT
Aspergillus niger	NR	NT
Aspergillus terreus	NR	NT
shiga toxin-producing E. coli	Not Detected	Pass
Salmonella SPP	Not Detected	Pass

ND=Not Detected; *analytical instrumentation used:qPCR*



Infinite Chemical Analysis Labs
8380 Miramar Mall #102
San Diego, CA
(858) 623-2740
www.infiniteCAL.com
Lic# C8-18-0000019-TEMP

Josh M Swider

Josh Swider
Lab Director, Managing Partner
05/06/2019

Confident Cannabis
All Rights Reserved
support@confidentcannabis.com
(866) 506-5866
www.confidentcannabis.com



This product has been tested by Infinite Chemical Analysis, LLC using valid testing methodologies and a quality system as required by state law. All LQC samples were performed and met the prescribed acceptance criteria in 16 CCR section 5730, pursuant to 16 CCR section 5726(e)(13). Values reported relate only to the product tested. Infinite Chemical Analysis, LLC makes no claims as to the efficacy, safety or other risks associated with any detected or non-detected levels of any compounds reported herein. This Certificate shall not be reproduced except in full, without the written approval of Infinite Chemical Analysis, LLC.



Certificate of Analysis

QA SAMPLE - INFORMATIONAL ONLY

3 of 3

ICAL ID: 20190501-096
Sample: 1905ICA2081.6183
Nutr - 1.0 oz unflavored 750mg
Strain: Nutr - 1.0 oz unflavored 750mg
Category: Ingestible

GMP Global Nutrition Inc.
Lic. #
13653 Central Ave.
Chino, CA 91710
Lic. #

Batch#:
Primary Size:
Total/Batch Size:
Collected: 05/06/2019; Received: 05/06/2019
Completed: 05/06/2019

Chemical Residue Screening

Category 1	LOQ	LOD	Status	Mycotoxins	LOQ	LOD	Limit	Status
------------	-----	-----	--------	------------	-----	-----	-------	--------

Category 2	LOQ	LOD	Limit	Status	Category 2	LOQ	LOD	Limit	Status
------------	-----	-----	-------	--------	------------	-----	-----	-------	--------

Unknown Analyte(s):

NR= Not Reported thus no analysis was performed, ND= Not Detected thus the concentration is less then the Limit of Quantification (LOQ) , *analytical instrumentation used:LC-MSMS & GC-MSMS*



Infinite Chemical Analysis Labs
8380 Miramar Mall #102
San Diego, CA
(858) 623-2740
www.infiniteCAL.com
Lic# C8-18-0000019-TEMP

Josh M Swider

Josh Swider
Lab Director, Managing Partner
05/06/2019

Confident Cannabis
All Rights Reserved
support@confidentcannabis.com
(866) 506-5866
www.confidentcannabis.com



This product has been tested by Infinite Chemical Analysis, LLC using valid testing methodologies and a quality system as required by state law. All LQC samples were performed and met the prescribed acceptance criteria in 16 CCR section 5730, pursuant to 16 CCR section 5726(e)(13). Values reported relate only to the product tested. Infinite Chemical Analysis, LLC makes no claims as to the efficacy, safety or other risks associated with any detected or non-detected levels of any compounds reported herein. This Certificate shall not be reproduced except in full, without the written approval of Infinite Chemical Analysis, LLC.