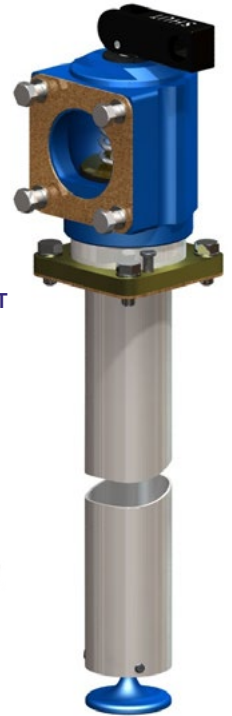


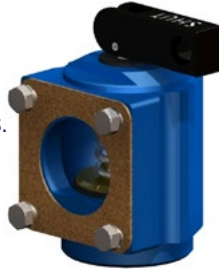


RIS-FLANGE2-SUCTION-MK2-LT
2" non shut-off suction module
without suction tube.

RIS-FLANGE2-SO-SUCTION-MK2
Complete module with suction tube
and flip over test feature.



RIS-FLANGE2-SO-SUCTION-R2-MK2
Module for use on threaded tank lid ports.



Also available:

RIS-FLANGE2-SO-SUCTION-MK2-LT
2" shut-off suction module
without suction tube.



AVAILABLE CONFIGURATIONS:

Inlet Flange:

PECAT fittings to suit all pipework systems.

Base Flange:

Swivel RIS-FLANGE base to allow alignment
- fits to 2" flange port on RIS-FLANGE lids (or
to 4" port with use of 4 to 2 adaptor plates.



Flexible connectors
available.

Part of the RIS-FLANGE Tanklid System, a comprehensive series of products to populate either suction or pressure system tank lids with high quality, efficient fittings that are easy to install, maintain and test. This system also allows simple disassembly and reconfiguration of layout on tank lids using only hand tools.

- Lower installation costs - can be fitted to tanks in the factory or on site.
- Easy to fit to the tank lid, allows 360° rotation of modules to align with pipework entry.
- Available with 'shut-off' test fitting capability or plain 'elbow' style.
- Suitable for use with Bio-Fuel blends up to 90%.
- Eliminates leak paths with blind hole tappings on lid.
- Compatible with all pipework brands.
- Video of system available from our website.
- Flexible connectors available which make fitting and servicing easier and remove stress from pipework.

Materials:

Anodised Aluminium
Viton A (FKM)
Delrin (Polyacetal)
Stainless Steel

Suitable for:

Petroleum Spirit (including
Ethanol Blends up to 90%)
Diesel
Bio Diesel/FAME Blends

Document Ref:

DATA-RIS-FLANGE2-SUCTION-160118
Installation Instructions
INS-RIS-FLANGE2-SUCTION
**Maintenance/Serviceing
Instructions**
MAINT-RIS-FLANGE2-SUCTION