

### AVAILABLE CONFIGURATIONS:

#### 5 port Do-nuts:

##### RIS-DONUT-5-20-25

Body diameter 99mm  
3 x M20 ports, 2 x M25 ports  
(without glands)

##### RIS-DONUT-5-20

Body diameter 99mm  
5 x M20 ports  
(without glands)

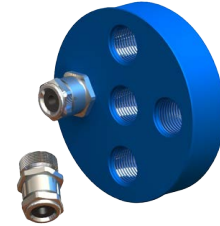


RIS-DONUT-9-20 shown above  
with optional cable glands

#### 6 port Do-nuts:

##### RIS-DONUT-6-20-25

Body diameter 99mm  
3 x M20 ports, 3 x M25 ports  
(without glands)



RIS-DONUT-5-20 shown above

#### 9 port Do-nuts:

##### RIS-DONUT-9-20

Body diameter 99mm  
9 x M20 ports  
(without glands)

#### 12 port Do-nuts

##### RIS-DONUT-133- 12-20

Body diameter 133mm  
12 x M20 ports  
(without glands)

**Designed to prevent escape of vapour from access chambers into cable ducts, whilst making routing of cables neat and easy with the use of IP68 rated cable glands. M20/M25 threaded ports for IP rated cable glands.**

- Simple to use and easy to seal cable gland 'Do-nut'
- Prevents vapour escaping into cable ducts
- 99mm diameter models available
- 133mm diameter model available with 12 x M20 ports
- Available with integral IP68 rated gland fittings on request
- To be used with proprietary cable duct seals
- Complies with Directive 94/9/EC

#### Materials:

Anodised aluminium

#### Suitable for:

IP68 rated gland fittings

#### Fittings:

(according to model - seeabove)  
M20  
M25

#### Document Ref:

DATA-CABLE-GLAND-DONUT-140807