



# Shot Blast Floor Marking

Preparing the concrete prior to applying a paint system is fundamentally important to the performance and longevity of any floor markings.

Shot blasting is literally the practice of hitting the floor surface with very small metallic beads, which strip the smooth finished surface to expose a new roughened concrete surface. The fresh concrete beneath is ideal for the paint system to 'key' with (adhere to).

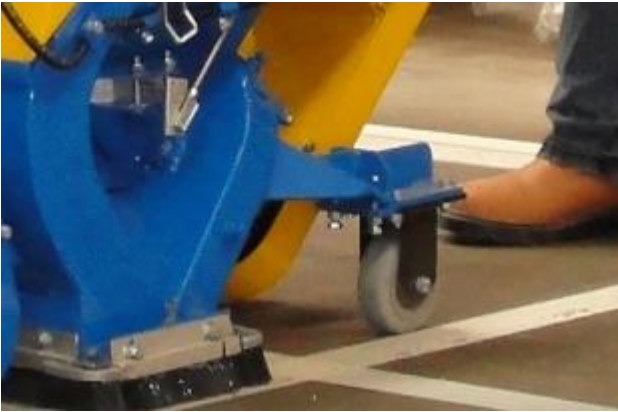
Warehouse Floor Marking Ltd are not restricted to, nor have a preference for one type of paint or



manufacturer, which means the paint types available to us are selected because they perform the best. We will never use inferior products, we select the most appropriate based on the parameters and demands of the environment in which they are to be installed.

The time needed to install vacuum shot blasted lines is significantly less than the alternative prepared methods which makes it a more cost effective and preferred option for those who operate very busy facilities and/or have limited budgets.

To explore this option further or to arrange a site visit, please contact us.



Recommended for use with

