

COMMUNITY RENEWABLE ENERGY



May 2019

EnergETHIC Association



Our mission :

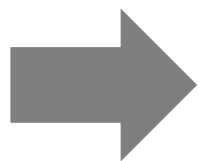
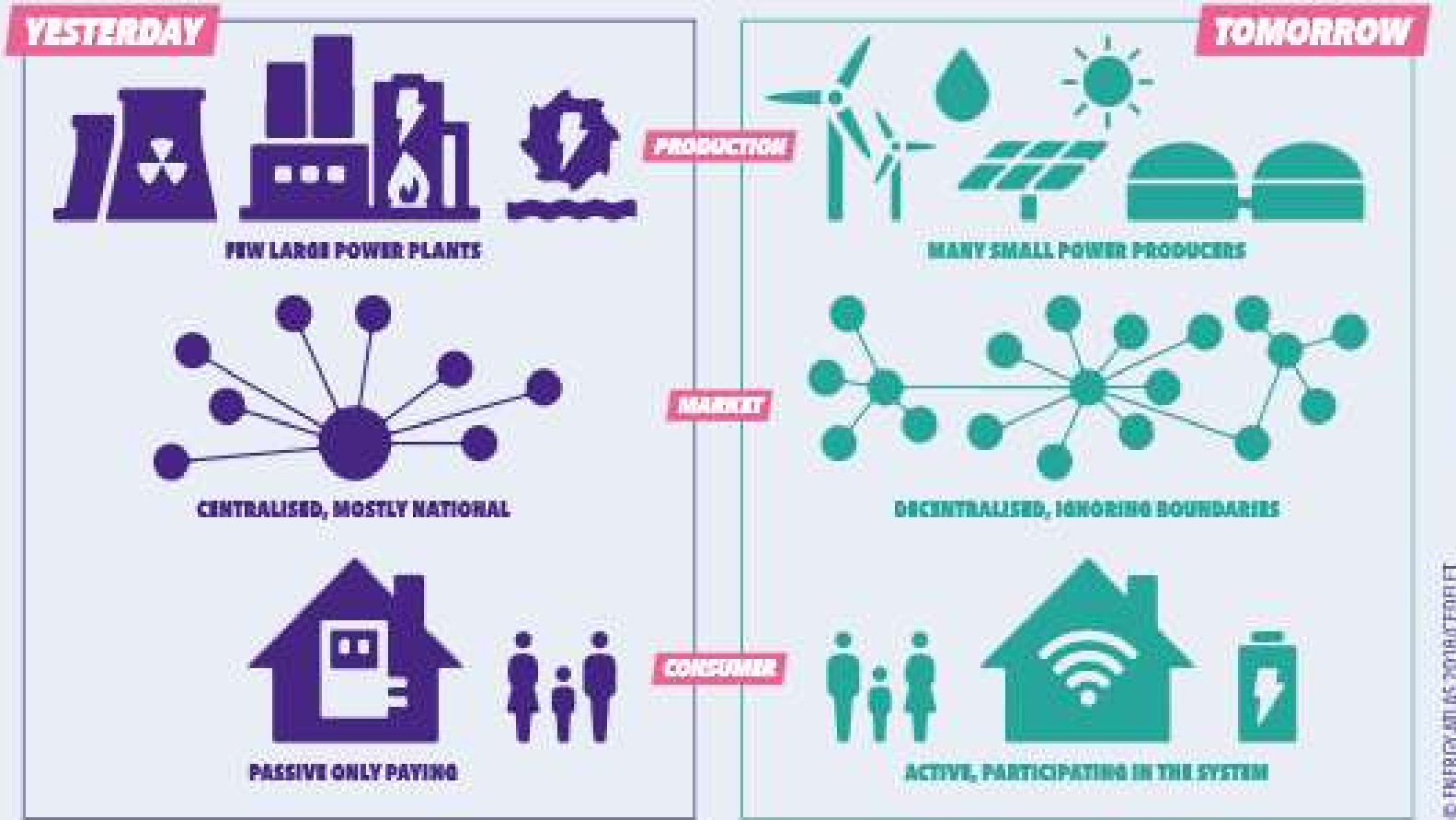
To help local authorities and citizens to create
community renewable energy

(mainly for solar and wood energy production)

Context - Issues

STAYING BIG OR GETTING SMALLER?

Expected structural changes in the energy system made possible by the increased use of digital tools



Community renewable energy
= key of the energy revolution

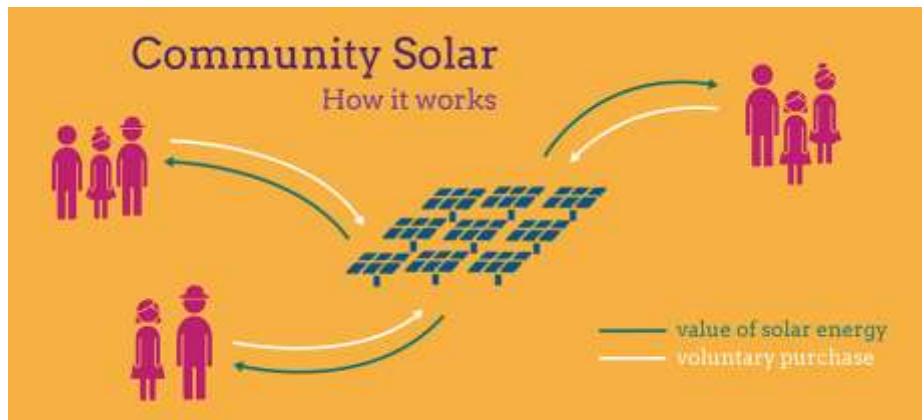
Community renewable energy (CRE) in the EU legislation

- ▶ Situation today : a non-helping EU legislation
- ▶ New EU legislation : **RED II (Renewable Energy Directive II - 2018)**
 - ❑ Recognizes CRE as stakeholders in the energy system
 - ❑ Provides rights : **right to generate, store, consume and sell renewable energy**
 - ❑ Provides the basis to develop favourable national frameworks to support citizens
 - ❑ Requires governments to simplify administrative tasks and procedures

Community renewable energy (CRE) : definition in the EU legislation

A renewable energy community is a **legal entity** which :

- ❑ Develops and owns renewable energy projects
- ❑ Is controlled by local shareholders or members (citizens, SMEs, local authorities...)
- ❑ Primary purpose : environmental, economic or social community benefits rather than financial profits



Renewable energy community in France

- ▶ + 300 projects
- ▶ “Energie Partagée” ’s Charter
 - ❑ Local anchorage
 - ❑ Open-governance
 - ❑ No speculation
 - ❑ Ecology
- ▶ Local citizens and authorities are not just investing in a renewable energy project, they control and own it !



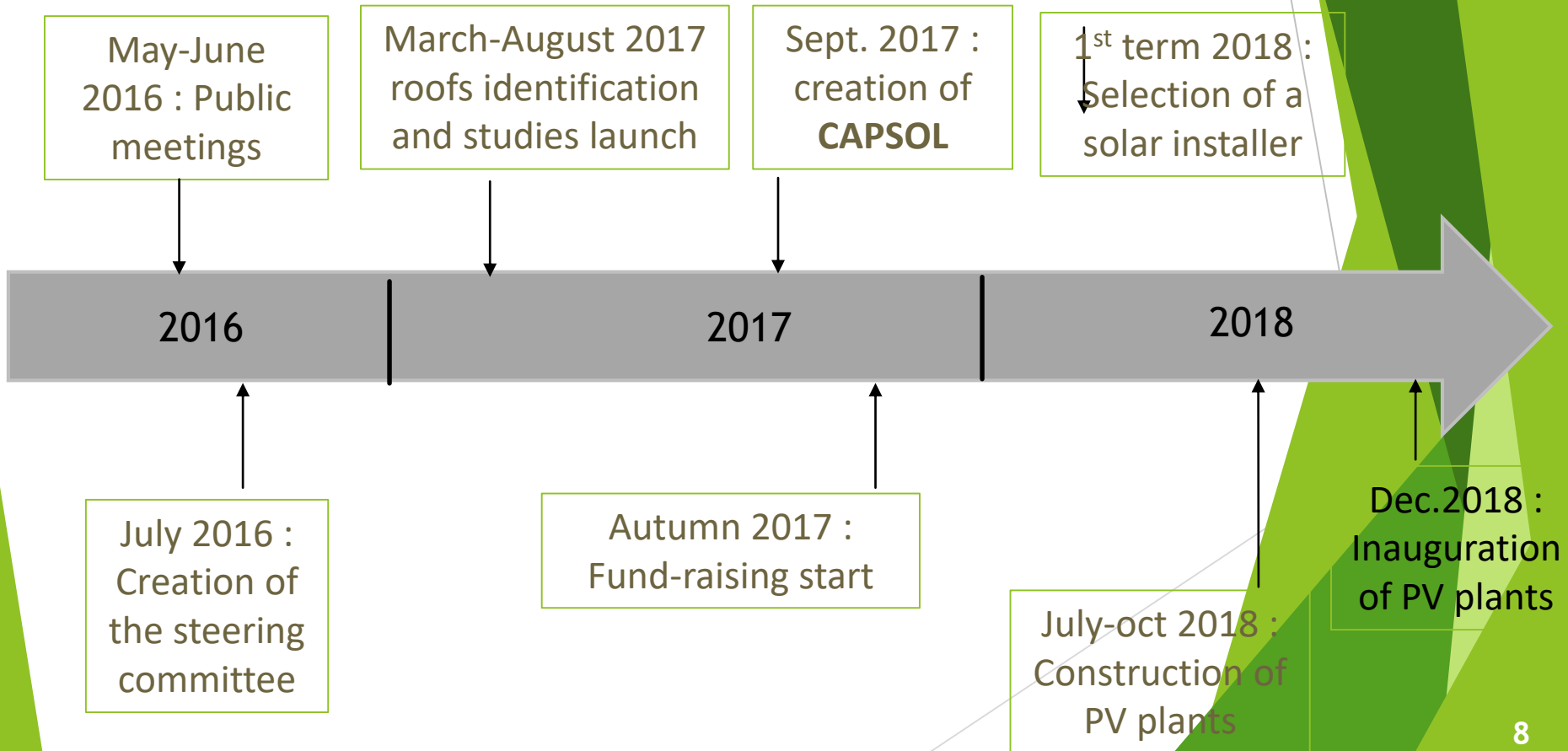
Projects supported by EnergETHIC

- ▶ 4 renewable energy communities :
 - Energie Citoyenne : 3 PV plants (48 kWc) + 4 wood boilers
 - CAPSOL : 7 PV plants (48 kWc)
 - Mine de Soleil : 8 PV plants (450 kWc) - *under construction*
 - ECO : 7 PV plants (360 kWc) - *under construction*



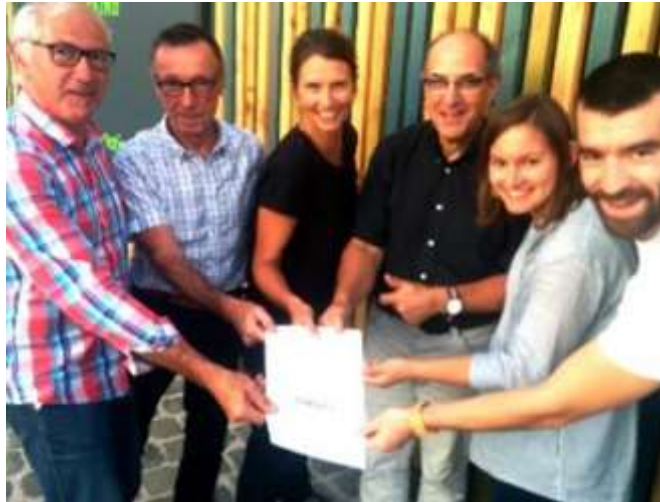
PROJECT STEPS

CAPSOL was created in 2017 by a group of citizens under the impulse of a local authority



Cooperative CAPSOL

- ▶ Created in 2017 by 7 people at the instigation of a local authority
 - ▶ Equity is owned by 75 shareholders (citizens, SMEs, associations, municipalities)
 - ▶ 1 shareholder = 1 vote



- ▶ 7 PV plants on private and public buildings
 - ▶ Total power : 48 kWc
 - ▶ Production : 45,8 MWh/year
Sold to coop Enercoop (20-year contract)

The 7 PV plants

► 4 houses



The 7 PV plants

- ▶ A school



- A public warehouse

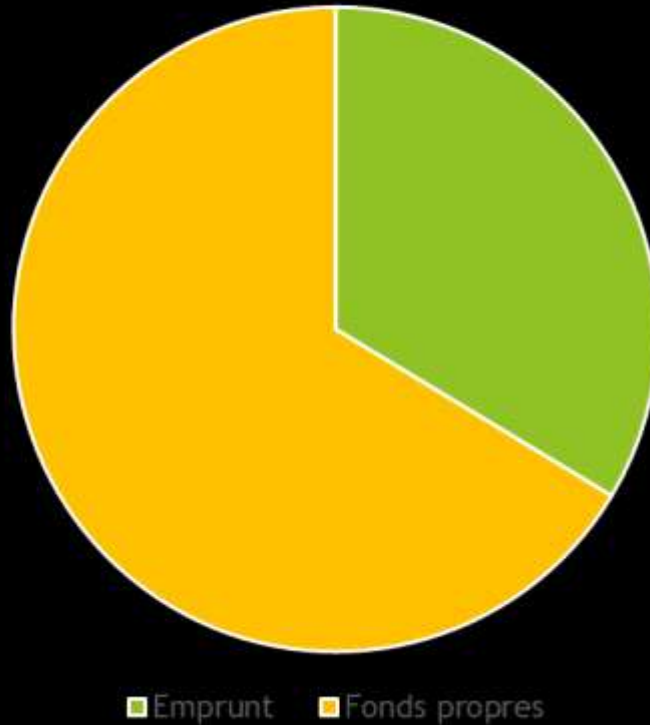


- ▶ A private warehouse



PROJECT FINANCING

Total investment for 7 PV plants = 110 000 €



Loan

Equity (73 000 €)

75 shareholders : citizens, SMEs, associations, municipalities

1 share = 100 €

Thank you for your attention !

EnergETHIC
Audrey JUMEAUX

Phone : 03.21.47.76.17.

Mail : energethic@mailoo.org

Website : www.energethic-asso.fr