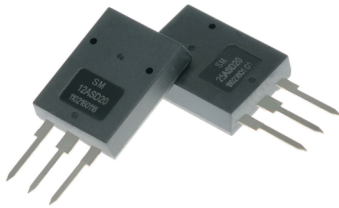


SM-ASD DC No-arc Device

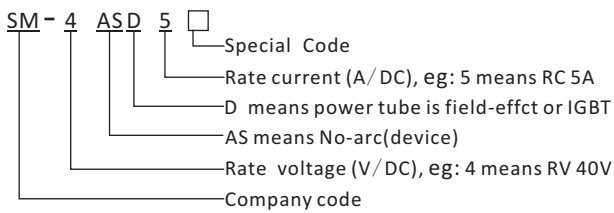
rated current: 1~240(A/DC)

General

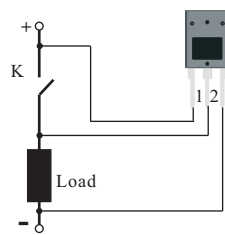


The ASD series DC No-arc devices are the world's first no-arc devices, which solve the arc problems that having been troubling mechanical switches such as relays, push-button switches etc. It can suppress the generation of arcs and is suitable for the arc extinguishing of mechanical switches with various DC circuits. The device can increase the electrical life by over an order of magnitude, improve the current breaking capacity and the withstand voltage level of main circuit, and greatly reduce the amount of maintenance, thus being an extremely "green" product.

Product Code



Wiring Diagram



Caution:

- ASD series products are not suitable for switches arc extinguishing for AC loads.
- It is recommended to connect a bidirectional transient suppression device between pin 1 and pin 2 of this device in parallel when it is used in case of over-voltage surge.
- According to customer needs, pin 1 can connect with a fuse in series, and the rated operating current of fuse is 1/3 to 1/2 of the load current.

Product list

Parameters	Items	Current (A/DC)	Package	Withstand-voltage value (V/DC)	Parameters	Items	Current (A/DC)	Package	Withstand-voltage value (V/DC)				
Models					Models								
SM-4ASD5		5	To3p	40	SM-12ASD5		5	To3p	120				
SM-4ASD10		10			SM-12ASD10		10						
SM-4ASD20		20			SM-12ASD20		20						
SM-4ASD30		30			SM-12ASD30		30						
SM-4ASD50		50			SM-12ASD50		50						
SM-4ASD80		80			SM-12ASD75		75						
SM-4ASD100		100			SM-12ASD100		100						
SM-4ASD120		120			SM-12ASD120		120						
SM-4ASD150		150			SM-12ASD150		150						
SM-4ASD180		180			To3plus	40	SM-20ASD1				1	To3p	200
SM-4ASD200		200	SM-20ASD5				5						
SM-4ASD240		240	To3p	60	SM-20ASD10		10	To3plus	400				
SM-6ASD5		5			SM-20ASD20		20						
SM-6ASD10		10			SM-20ASD30		30						
SM-6ASD20		20			SM-20ASD50		50						
SM-6ASD30		30			SM-20ASD80		80						
SM-6ASD50		50			SM-20ASD100		100						
SM-6ASD80		80			SM-20ASD120		120						
SM-6ASD100		100			SM-20ASD150		150						
SM-6ASD120		120			To3plus	80	SM-40ASD1				1	To3p	600
SM-6ASD150		150					SM-40ASD5				5		
SM-6ASD180		180	SM-40ASD10				10						
SM-6ASD150		150	SM-40ASD20				20						
SM-6ASD180		180	SM-40ASD30				30						
SM-8ASD5		5	SM-40ASD50				50						
SM-8ASD10		10	SM-40ASD80				80						
SM-8ASD20		20	SM-40ASD100				100						
SM-8ASD30		30	SM-40ASD120				120						
SM-8ASD50		50	SM-40ASD150				150						
SM-8ASD80		80	To3plus	80	SM-60ASD1		1	To3p	600				
SM-8ASD100		100			SM-60ASD5		5						
SM-8ASD120		120			SM-60ASD10		10						
SM-8ASD150		150			SM-60ASD20		20						
SM-8ASD180		180	To3plus	80	SM-60ASD30		30	To3p	600				

SM-AAE SERIES

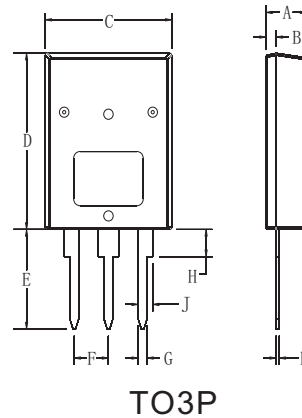
Product list

Parameters Models	Items	Current (A/DC)	Package	Withstand-voltage value (V/DC)	Parameters Models	Items	Current (A/DC)	Package	Withstand-voltage value (V/DC)
SM-60ASD50	50	To3plus	600	600	SM-120ASD1	1	To3p	1200	1200
SM-60ASD80	80				SM-120ASD4	4			
SM-60ASD100	100				SM-120ASD6	6			
SM-60ASD120	120				SM-120ASD10	10			
SM-60ASD140	140				SM-120ASD20	20			
SM-90ASD1	1	To3p	900	900	SM-120ASD50	50	To3plus	1200	1200
SM-90ASD4	4				SM-120ASD80	80			
SM-90ASD6	6				SM-120ASD100	100			
SM-90ASD10	10	SM-120ASD120	120						
SM-90ASD20	20	To3plus	900	900	SM-120ASD140	140			
SM-90ASD50	50								
SM-90ASD80	80								
SM-90ASD100	100								
SM-90ASD120	120								
SM-90ASD140	140								

Notes: working temperature scope -25~85(°C); saving environment temperature scope -40~125(°C); the models with rated voltage over 400V need to be customized.

Dimensions (unit: mm)

Ref.	Dimensions			
	Millimeters		Inches	
	Min.	Max.	Min.	Max.
A	6.3	6.5	0.248	0.255
B	1.5	1.7	0.059	0.066
C	19.8	20.2	0.779	0.795
D	25.8	26.2	1.015	1.031
E	14.5	14.9	0.570	0.586
F	5.1	5.5	0.200	0.216
G	1.3	1.5	0.051	0.059
H	3.9	4.1	0.153	0.161
J	2.2	2.4	0.086	0.094
K	0.4	0.6	0.015	0.023



Ref.	Dimensions			
	Millimeters		Inches	
	Min.	Max.	Min.	Max.
A	9.1	9.5	0.358	0.374
B	3.8	4.2	0.149	0.165
C	19.0	19.4	0.748	0.764
D	25.1	25.5	0.988	1.004
E	14.0	14.4	0.551	0.567
F	5.2	5.6	0.205	0.220
G	1.3	1.5	0.051	0.059
H	3.4	3.8	0.134	0.150
J	2.2	2.4	0.086	0.094
K	0.25	0.35	0.010	0.014

