



## Legend Series

**Model# LS-200**

The Legend offers exceptional rigidity, uncompromising durability and maximum safety even on the toughest courts!

Built from heavy 6" square, 3/16" thick steel tubing, the Legend provides unmatched stability and durability. Designed for the most rugged playgrounds, the Legend performs equally well on the home court. The post is positioned 66" behind the backboard for safety.

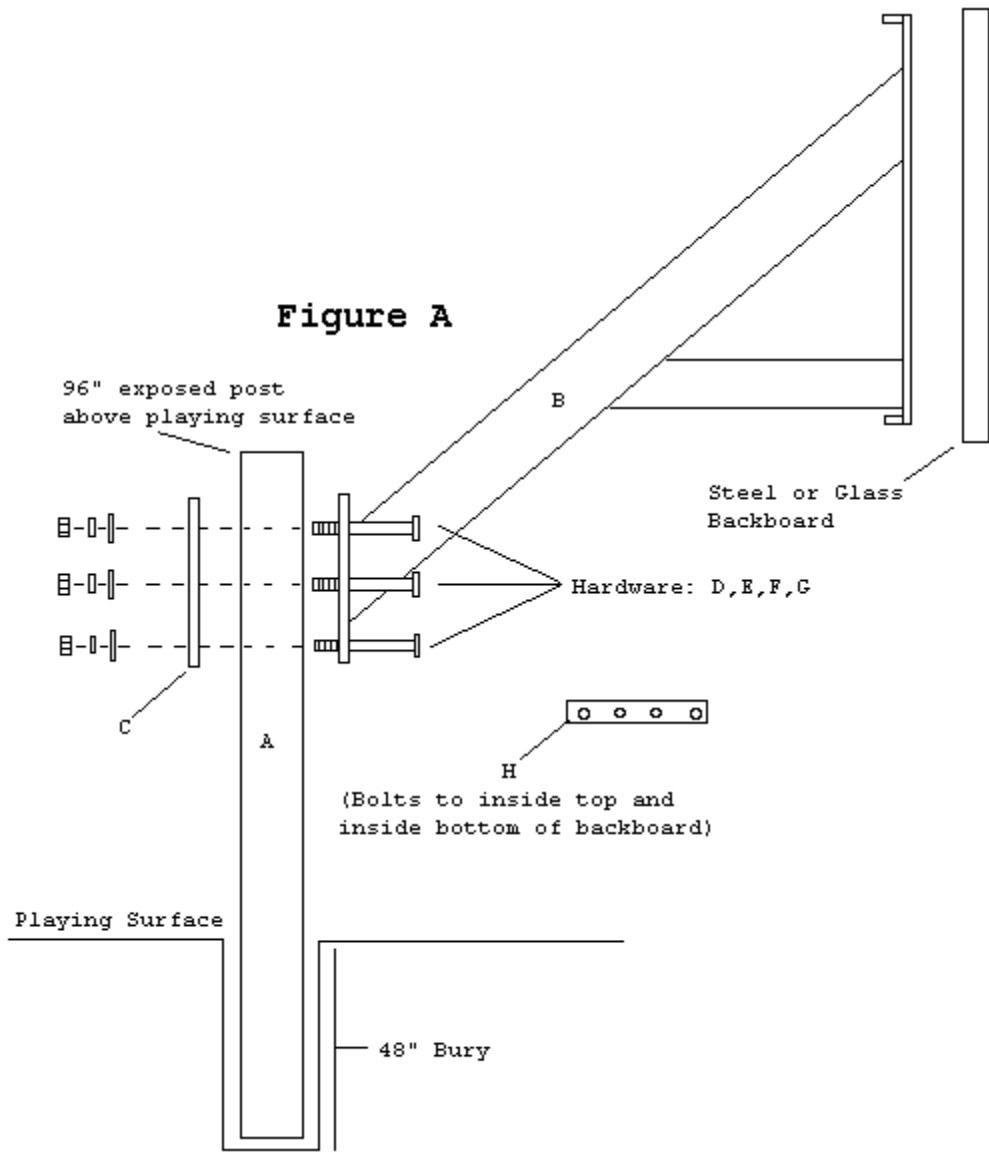
The extension arm on the Legend is attached to the vertical post via six 5/8" high tensile bolts. Though the Legend is considered a "Fixed Height" goal, the extension arm can be bolted at any height along the post.

Comes with 42" x 72" acrylic backboard.

For additional safety, pole padding and backboard padding are Sold Separately.



# Legend Series Assembly Instructions



## Bill of Materials

A (1) Vertical Post	I (8) 3/8"x 1 1/4" Hex Bolt
B (1) 45 Degree Extension Arm	J (8) 3/8" Flatwasher
C (1) Mounting Plate	K (8) 3/8" Lockwasher
D (6) 5/8"x 8" Hex Bolt	L (8) 3/8" Hex Nut
E (6) 5/8" Hex Nut	M (2) 3/8" x 2 1/2" Hex Bolt
F (6) 5/8" Flatwasher	
G (6) 5/8" Lockwasher	
H (2) Backboard Frame Support	

**NOTE: Immediately unpack all components and cross check against bill of materials. Report any shortages to Jaypro customer service at 1-800-243-0533**

1. Position the hole taking into consideration that the backboard will be approximately 66" from the front of the vertical post.
2. Dig a hole 18" in diameter and 48" deep.
3. Install post in wet concrete with capped end up. Be sure that at least 96" of post extends above the playing surface to insure adjustment to ten feet. Make sure post is installed straight and plumb, brace if necessary while cement cures.
4. After allowing 48 hours drying time for the concrete, mount the 45-degree extension arm as shown. Arm can be mounted loosely at ground level and slid up the pole or mounted at correct height depending on lifting equipment available. Use hardware D,E,F,G (See Figure A)

ATTENTION: If you are attaching a white 42"x 72" rectangular fiberglass backboard (FT280) you must first drill two upper attachment points in the backboard. With your FT280 laying face down on the ground, match your extension arm up to the backside of the board as it will eventually be mounted (See figure C). CAUTION: The extension arm will not balance by itself, serious injury may occur if arm is allowed to fall. Making sure to keep the rim holes in the backboard in line with the rim holes in the extension arm faceplate, use a 3/8" drill bit to drill two attachment holes through the backboard at points N & O shown in figure D.

**5. If you are attaching an FT280 backboard skip to step 7.** Loosely attach both backboard frame supports (part H) to the inside top and bottom of your backboard using the 3/8" hex bolts, etc. as shown in figure B. Note: for this step only attach the backboard frame supports using the two outermost holes. Do not bolt the support at the center two holes! ATTENTION: If your backboard is tempered glass or acrylic check to make sure all four steel grommets are located in the rim holes, if any are missing check in the box. If grommets are missing and cannot be located DO NOT proceed with assembly, call Jaypro immediately. Additionally, if your backboard is acrylic you will find two black rubber gaskets packaged in with your backboard. Disregard these gaskets, you will not need them.

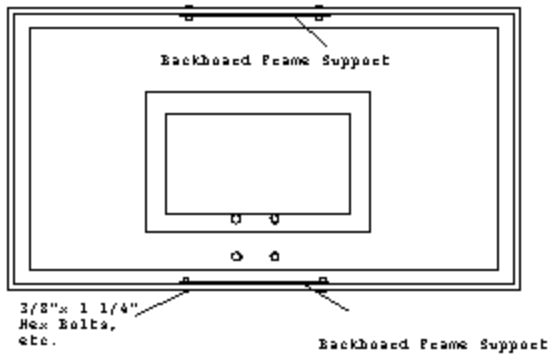
6. Next, lift and slide backboard onto extension arm aligning the attachment holes at the top and bottom of extension arm with the holes in the backboard frame.

7. Bolt backboard to extension arm at all points along the top and bottom using the remaining 3/8"x 1 1/4" hex bolts, etc. Make sure rim hole pattern in the extension arm faceplate lines up with the rim hole pattern in the backboard, then tighten all 3/8" hardware. If you are mounting an FT280 backboard you must slide (2) 3/8" x 2 1/2" hex bolts and washers through the (2) upper attachment points in the backboard from the face side. Attach backboard to extension arm faceplate at points N & O using (2) 3/8" washers, lock washers and hex nuts. Make sure your rim holes match up at the bottom.

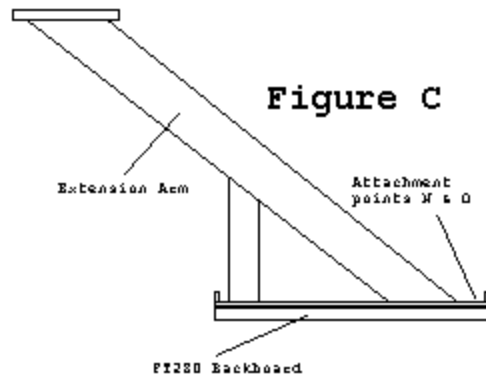
8. Attach rim using the hardware provided in the rim box. Level rim with backboard, tighten rim hardware and attach net. Check over entire unit and make sure all hardware has been tightened.

**Tip: If you are setting the unit at 10 feet, the bottom of the 45 degree extension arm will be bolted 75 1/2" up the vertical post.**

**Figure B**



**Figure C**



**Figure D**

