

Instruction for Use (IFU)

For Product: Bullseye Safety Lancet

Document No.: IFU-BESL

Revision: 00

Date: 01st August 2015

Table of Content

	Page
Intended clinical use	3
Operating instructions/ instructions for use	3
Warnings/ Precautions	3
Photographs highlighting the product	3
Photographs highlighting the usage	4

Intended clinical use

The Safety Bullseye Safety Lancet are used alone, to obtain capillary blood samples needed for blood glucose monitoring or for other tests requiring one or two drops of blood.

The Bullseye Safety Lancet is intended to be used by a single patient and should not be shared.

Operating instructions/ instructions for use

The Safety Bullseye Safety Lancet are used alone, to obtain capillary blood samples needed for blood glucose monitoring or for other tests requiring one or two drops of blood.

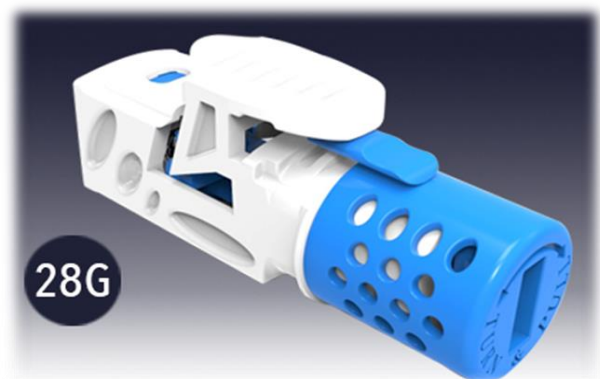
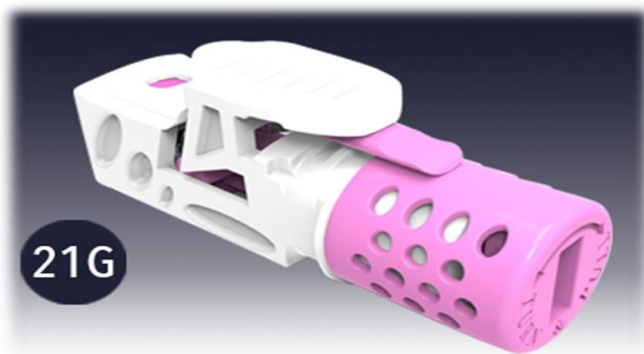
Warnings/ Precautions

Device is NOT intended for use on multiple individuals and/or patients.

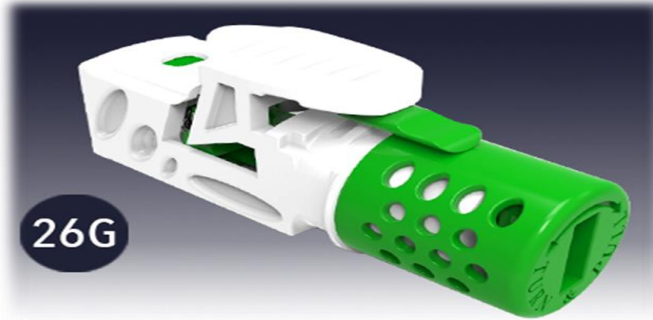
Storage Condition

Store at room temperature

Photograph highlighting the product



CIN: U36912MH2013PTC241096



Photograph highlighting the usage

STEP-01: Turn to safety Cap



STEP-02: Remove safety Cap



STEP-03: Prepare the site for use



STEP-04: Fire



STEP-04: Use the blood for testing as per requirements.



STEP-04: Attach the cap on device and discard it

