

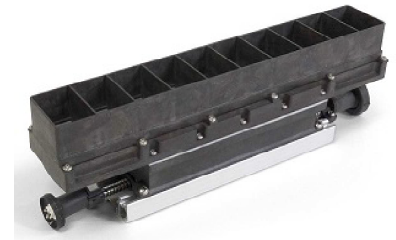
IES INDOOR REPORT
PHOTOMETRIC FILENAME : C6RX-BVL-00-UNVE5-35-NA.IES

DESCRIPTION INFORMATION (From Photometric File)

IESNA:LM-63-2002
 [TEST] 3343
 [ECN] 3081
 [TESTLAB] Tempo LLC
 [ISSUEDATE] 1/31/2018 11:51:54 AM
 [MANUFAC] Tempo LLC
 [LUMCAT] C6RX-BVL-00-UNVE5-35-NA
 [LUMINAIRE] Natural anodized aluminum housing with 1" deep louver and clear glass lens
 [LAMP] Sixteen (16) white LEDs (3500K) with shaping and diffusing film
 [ELECTRICALS] 120.06 VAC, 0.04 A, 0.9914 PF, 15% ATHD

CHARACTERISTICS

Lumens Per Lamp	N.A. (absolute)
Total Lamp Lumens	N.A. (absolute)
Luminaire Lumens	137
Total Luminaire Efficiency	N.A.
Luminaire Efficacy Rating (LER)	28
Total Luminaire Watts	4.85
Ballast Factor	1.00
CIE Type	Direct
Spacing Criterion (0-180)	0.96
Spacing Criterion (90-270)	0.78
Spacing Criterion (Diagonal)	0.90
Basic Luminous Shape	Rectangular
Luminous Length (0-180)	0.13 ft
Luminous Width (90-270)	0.96 ft
Luminous Height	0.00 ft



LUMINANCE DATA (cd/sq.m)

Angle In Degrees	Average 0-Deg	Average 45-Deg	Average 90-Deg
45	889	683	935
55	487	274	362
65	295	164	210
75	173	118	142
85	113	103	93

IES INDOOR REPORT
PHOTOMETRIC FILENAME : C6RX-BVL-00-UNVE5-35-NA.IES

CANDELA TABULATION

	<u>0</u>	<u>5</u>	<u>10</u>	<u>15</u>	<u>20</u>	<u>25</u>	<u>30</u>	<u>35</u>	<u>40</u>	<u>45</u>
0.0	175.31	175.31	175.31	175.31	175.31	175.31	175.31	175.31	175.31	175.31
2.5	175.40	175.28	175.15	175.02	174.88	174.68	174.47	174.27	174.07	173.91
5.0	175.02	174.78	174.54	174.14	173.74	173.08	172.41	171.75	171.09	170.41
7.5	174.28	173.83	173.37	172.41	171.45	170.28	169.10	167.80	166.49	165.26
10.0	173.03	172.29	171.55	170.03	168.51	166.73	164.94	162.97	160.98	159.12
12.5	171.52	170.42	169.32	167.12	164.92	162.35	159.79	157.11	154.43	152.07
15.0	168.62	167.11	165.60	162.86	160.12	156.97	153.82	150.58	147.33	144.44
17.5	164.59	162.68	160.75	157.33	153.91	150.19	146.46	143.02	139.59	136.55
20.0	160.16	157.74	155.32	151.25	147.18	142.86	138.52	134.78	131.04	128.16
22.5	154.02	151.28	148.53	144.07	139.62	134.94	130.25	126.39	122.52	119.57
25.0	134.00	132.79	131.58	129.56	127.54	124.16	120.77	117.30	113.83	110.63
27.5	65.22	69.52	73.82	83.75	93.66	99.04	104.42	103.95	103.47	100.55
30.0	21.16	22.37	23.58	29.97	36.35	52.14	67.93	77.86	87.79	87.07
32.5	14.03	14.08	14.13	14.90	15.67	20.98	26.29	43.95	61.60	67.03
35.0	11.29	11.21	11.13	11.29	11.44	12.24	13.04	21.18	29.32	42.38
37.5	9.46	9.34	9.22	9.23	9.23	9.44	9.65	11.28	12.91	24.27
40.0	8.48	8.28	8.08	7.91	7.73	7.73	7.73	8.15	8.57	13.12
42.5	7.80	7.57	7.33	7.05	6.77	6.55	6.33	6.43	6.52	7.62
45.0	7.00	6.78	6.56	6.26	5.95	5.65	5.35	5.23	5.11	5.38
47.5	5.94	5.77	5.59	5.36	5.11	4.82	4.53	4.29	4.04	4.02
50.0	4.76	4.66	4.55	4.36	4.16	3.95	3.75	3.48	3.21	3.04
52.5	3.46	3.35	3.24	3.23	3.21	3.09	2.96	2.73	2.50	2.28
55.0	3.11	2.99	2.87	2.67	2.46	2.35	2.24	2.07	1.89	1.75
57.5	2.43	2.37	2.30	2.16	2.02	1.87	1.71	1.57	1.42	1.37
60.0	2.20	2.10	2.00	1.84	1.67	1.52	1.37	1.26	1.14	1.13
62.5	1.74	1.69	1.64	1.53	1.42	1.27	1.11	1.02	0.93	0.93
65.0	1.39	1.35	1.30	1.21	1.12	1.03	0.92	0.85	0.77	0.77
67.5	1.09	1.06	1.02	0.96	0.88	0.81	0.74	0.68	0.62	0.63
70.0	0.87	0.84	0.80	0.76	0.71	0.66	0.60	0.56	0.52	0.52
72.5	0.65	0.65	0.64	0.60	0.55	0.51	0.46	0.45	0.43	0.43
75.0	0.50	0.50	0.49	0.46	0.42	0.39	0.36	0.35	0.34	0.34
77.5	0.37	0.37	0.36	0.34	0.31	0.30	0.28	0.27	0.26	0.26
80.0	0.26	0.26	0.25	0.25	0.23	0.22	0.21	0.21	0.19	0.19
82.5	0.18	0.17	0.17	0.17	0.16	0.16	0.15	0.14	0.14	0.14
85.0	0.11	0.11	0.11	0.11	0.11	0.11	0.09	0.10	0.11	0.10
87.5	0.07	0.07	0.06	0.07	0.06	0.06	0.06	0.06	0.06	0.06
90.0	0.00	0.00	0.00	0.00	0.00	0.00	0.00	0.00	0.00	0.00

Vert. Angles **Horizontal Angles**

	<u>50</u>	<u>55</u>	<u>60</u>	<u>65</u>	<u>70</u>	<u>75</u>	<u>80</u>	<u>85</u>	<u>90</u>
0.0	175.31	175.31	175.31	175.31	175.31	175.31	175.31	175.31	175.31
2.5	173.74	173.57	173.40	173.22	173.04	172.92	172.80	172.83	172.85
5.0	169.72	169.09	168.46	167.93	167.40	167.09	166.77	166.74	166.70
7.5	164.02	162.93	161.84	160.97	160.08	159.48	158.87	158.71	158.55
10.0	157.25	155.65	154.04	152.78	151.52	150.66	149.80	149.54	149.28
12.5	149.70	147.64	145.59	144.04	142.49	141.44	140.38	140.04	139.70
15.0	141.54	139.27	136.99	135.31	133.62	132.51	131.40	130.95	130.50
17.5	133.51	131.06	128.61	126.80	125.00	123.86	122.72	122.26	121.80
20.0	125.27	122.78	120.29	118.35	116.41	115.13	113.84	113.33	112.82
22.5	116.61	114.15	111.69	109.49	107.30	105.82	104.33	103.74	103.15
25.0	107.43	104.83	102.22	99.72	97.21	95.53	93.83	93.10	92.37
27.5	97.63	94.65	91.67	88.96	86.25	84.37	82.48	81.70	80.91
30.0	86.34	83.30	80.25	77.43	74.60	72.66	70.72	69.94	69.15

IES INDOOR REPORT
PHOTOMETRIC FILENAME : C6RX-BVL-00-UNVE5-35-NA.IES

CANDELA TABULATION - (Cont.)

32.5	72.46	70.28	68.10	65.46	62.81	60.98	59.14	58.36	57.57
35.0	55.43	55.58	55.72	53.52	51.32	49.61	47.90	47.13	46.36
37.5	35.63	39.63	43.63	41.90	40.16	38.55	36.94	36.13	35.32
40.0	17.67	24.75	31.82	30.66	29.51	27.94	26.38	25.62	24.85
42.5	8.72	14.81	20.89	20.27	19.64	18.19	16.73	16.00	15.27
45.0	5.65	8.68	11.71	11.41	11.11	9.78	8.44	7.90	7.36
47.5	4.00	4.78	5.54	5.29	5.03	4.58	4.13	4.04	3.94
50.0	2.88	2.89	2.89	3.03	3.17	3.25	3.32	3.33	3.34
52.5	2.06	2.11	2.17	2.38	2.60	2.69	2.77	2.79	2.80
55.0	1.60	1.68	1.76	1.93	2.09	2.19	2.28	2.30	2.31
57.5	1.32	1.38	1.43	1.56	1.68	1.77	1.85	1.87	1.88
60.0	1.12	1.14	1.16	1.25	1.34	1.42	1.49	1.51	1.52
62.5	0.92	0.94	0.96	1.02	1.08	1.14	1.19	1.21	1.22
65.0	0.76	0.77	0.78	0.83	0.87	0.92	0.96	0.98	0.99
67.5	0.63	0.64	0.64	0.68	0.72	0.75	0.78	0.80	0.81
70.0	0.52	0.53	0.53	0.55	0.57	0.60	0.62	0.63	0.64
72.5	0.42	0.44	0.44	0.46	0.47	0.48	0.48	0.50	0.51
75.0	0.33	0.35	0.35	0.36	0.36	0.38	0.39	0.40	0.41
77.5	0.25	0.26	0.27	0.28	0.29	0.30	0.31	0.31	0.30
80.0	0.19	0.19	0.19	0.20	0.21	0.22	0.23	0.23	0.23
82.5	0.13	0.13	0.13	0.15	0.15	0.15	0.14	0.14	0.14
85.0	0.09	0.09	0.10	0.10	0.10	0.10	0.09	0.10	0.09
87.5	0.06	0.06	0.06	0.06	0.06	0.06	0.05	0.06	0.06
90.0	0.00	0.00	0.00	0.00	0.00	0.00	0.00	0.00	0.00

IES INDOOR REPORT
PHOTOMETRIC FILENAME : C6RX-BVL-00-UNVE5-35-NA.IES

ZONAL LUMEN SUMMARY

Zone	Lumens	%Lamp	%Fixt
0-20	57.01	N.A.	41.50
0-30	104.98	N.A.	76.50
0-40	127.17	N.A.	92.70
0-60	135.69	N.A.	98.90
0-80	137.10	N.A.	99.90
0-90	137.21	N.A.	100.00
10-90	121.27	N.A.	88.40
20-40	70.16	N.A.	51.10
20-50	76.63	N.A.	55.80
40-70	9.51	N.A.	6.90
60-80	1.41	N.A.	1.00
70-80	0.42	N.A.	0.30
80-90	0.11	N.A.	0.10
90-110	0.00	N.A.	0.00
90-120	0.00	N.A.	0.00
90-130	0.00	N.A.	0.00
90-150	0.00	N.A.	0.00
90-180	0.00	N.A.	0.00
110-180	0.00	N.A.	0.00
0-180	137.21	N.A.	100.00

Total Luminaire Efficiency = N.A.%

ZONAL LUMEN SUMMARY

Zone	Lumens
0-10	15.94
10-20	41.07
20-30	47.97
30-40	22.19
40-50	6.47
50-60	2.05
60-70	0.98
70-80	0.42
80-90	0.11
90-100	0.00
100-110	0.00
110-120	0.00
120-130	0.00
130-140	0.00
140-150	0.00
150-160	0.00
160-170	0.00
170-180	0.00

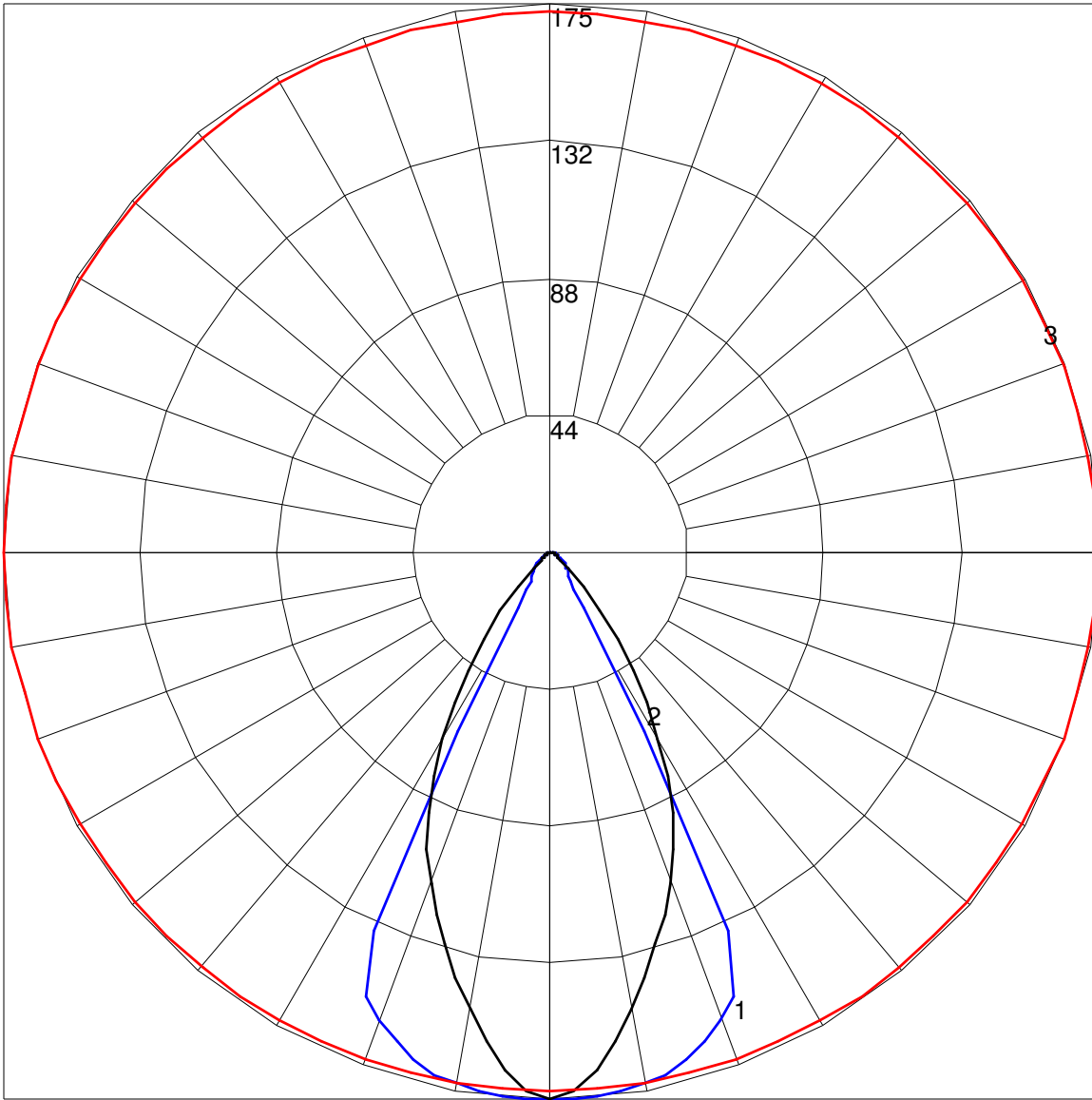
IES INDOOR REPORT
PHOTOMETRIC FILENAME : C6RX-BVL-00-UNVE5-35-NA.IES

COEFFICIENTS OF UTILIZATION - ZONAL CAVITY METHOD

Effective Floor Cavity Reflectance 0.20

RC	80				70				50			30			10			0	
	RW	70	50	30	10	70	50	30	10	50	30	10	50	30	10	50	30	10	0
0	119	119	119	119	116	116	116	116	111	111	111	107	107	107	102	102	102	100	
1	114	111	109	106	111	109	107	105	105	103	101	101	100	98	97	96	94		
2	108	103	99	96	106	102	98	95	99	96	93	96	93	91	93	91	89	87	
3	103	97	92	88	101	95	91	87	93	89	86	90	87	84	88	85	83	82	
4	98	91	85	81	96	89	84	81	87	83	80	85	82	79	83	80	78	76	
5	93	85	79	75	92	84	79	75	82	78	74	81	77	73	79	76	73	71	
6	89	80	74	70	87	79	74	70	78	73	69	76	72	69	75	71	68	67	
7	85	76	70	66	83	75	69	65	74	69	65	72	68	65	71	67	64	63	
8	81	71	66	62	79	71	65	61	70	65	61	69	64	61	68	64	61	59	
9	77	68	62	58	76	67	62	58	66	61	58	65	61	57	64	60	57	56	
10	74	64	58	55	73	64	58	55	63	58	54	62	58	54	61	57	54	53	

POLAR GRAPH



Maximum Candela = 175.4 Located At Horizontal Angle = 0, Vertical Angle = 2.5
1 - Vertical Plane Through Horizontal Angles (0 - 180) (Through Max. Cd.)
2 - Vertical Plane Through Horizontal Angles (90 - 270)
3 - Horizontal Cone Through Vertical Angle (2.5) (Through Max. Cd.)