

## House Lighting System

HLS RECESSED

REMOTE POWER SUPPLY



## INSTALLATION INSTRUCTIONS

---

Ratings, Hardware and Warning.....	Page 1
Installation Instructions.....	Page 1-4

---

### ELECTRICAL RATINGS

The HLS is a low voltage system, operating at 24V & 36V.

### HARDWARE PROVIDED (BY OTHERS)

- 1) Seismic Cable (see local Code)
- 2) Philips Screw Driver
- 3) Wire Strippers
- 4) Blade to cut Ceiling Tiles
- 5) #8 Self Drilling Sheet Metal Screws (See local Code)



#### WARNING:

Read and understand these instructions before installing. This product must be installed in accordance with the applicable installation code by a person familiar with the construction and operation of the product and the hazards involved. Turn off main power supply before installing the HLS.

## INSTALLATION

### STEP 1

After determining desired location for HLS fixture, remove ceiling tile where fixture will be placed.

See Figure 1.



Figure 1

## House Lighting System

HLS RECESSED

REMOTE POWER SUPPLY

### INSTALLATION (continued)

#### STEP 2

Lay HLS fixture in desired position in T-Bar Grid (Center mounting is recommended).

See **Figure 2**.

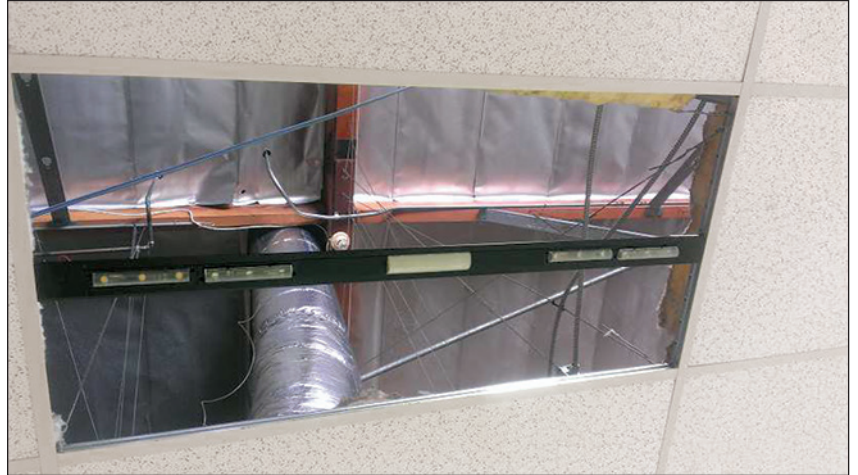


Figure 2

#### STEP 3

Attach fixture to T-Bar system by using seismic cable as shown below in **Figure 3** or fastening directly to the T-Bar grid with sheet metal screws as shown below in **Figure 4**.

Check local codes for required installation requirements. Repeat step 3 for opposite end of fixture.



Figure 3



Figure 4

## House Lighting System

HLS RECESSED

REMOTE POWER SUPPLY

### INSTALLATION (continued)

#### STEP 4

Using a Philips screwdriver, remove J-Box cover and remove knockout from cover.

Install clamp connector into cover. Using a plenum rated cable connect 36V circuit wires to red fixture wires. Connect 24V circuit wires to blue fixture wires as shown in **Figure 5**.

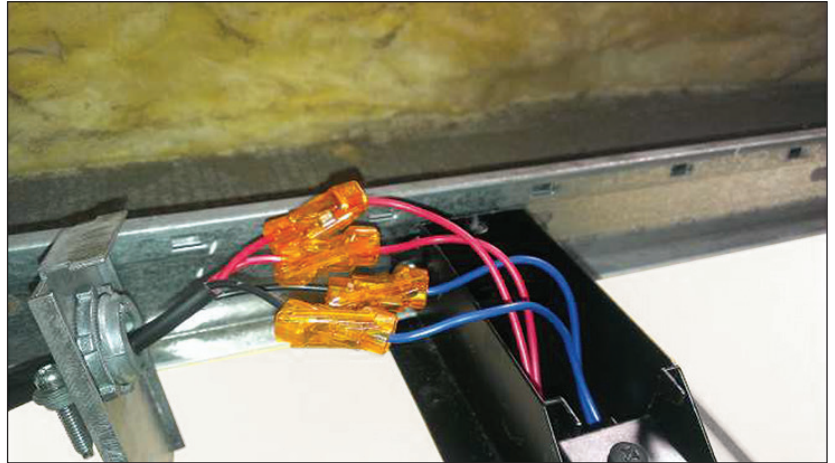


Figure 5

#### STEP 5

Tighten clamp connector over plenum rated cable. Tuck wires into J-box and replace cover as shown in **Figure 6**. For through fixture wiring repeat steps 4 & 5 for opposite end of fixture.

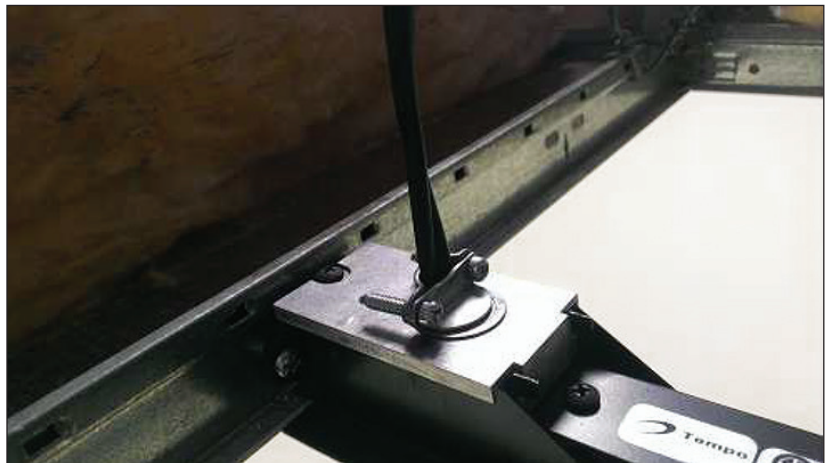


Figure 6

## House Lighting System

HLS RECESSED

REMOTE POWER SUPPLY

### INSTALLATION (continued)

#### STEP 6

Cut ceiling tile into two pieces to fit open area around fixture and install back into ceiling as shown in **Figure 7**.

#### STEP 7

Connect fixture wires to remote mounted power supply enclosure. Be sure to connect red fixture wires to 36V power supply and blue fixture wires to 24V power supply.



Figure 7