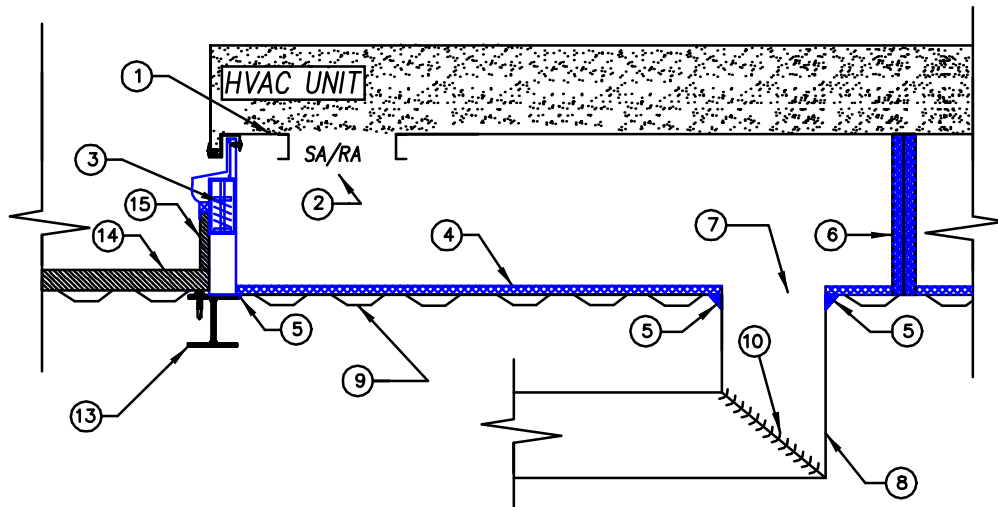


HUSHCORE™ WHISPER™ "P" SYSTEM MODEL *HPC-DS-33-P* PLENUM STYLE ACOUSTICAL VIBRATION CURB



BY RTU UNIT MANUFACTURER

1. RTU Base
2. RTU Openings

BY ACOUSTICAL MANUFACTURER

3. HUSH CURB™ HPC Vibration Roof Curb
4. HUSH GUARD™ HG Modular DS-33 Panelized Floor
5. HUSH SEALANT™ Acoustical Caulk at all Duct Drops & Curb Perimeter
6. Plenum Divider
7. SA/RA Curb Openings (offset from unit openings)

BY HVAC CONTRACTOR

8. Duct Work
9. Roof Deck Flashing to within 1/4" of all Duct Drops but not in contact with Duct Wall
10. Turning Vane
11. Fan sound attenuation per schedule/specifications (not shown in detail)
12. Submit Letter of Certification from Acoustical Supplier following Inspection

BY GENERAL CONTRACTOR

13. Building Steel
14. Built-up Roof or Concrete
15. Insulation and Cant Strip
16. Curb Slope requirements where applicable

RTU NOISE REDUCTION SYSTEM

HUSHCORE™ WHISPER™ "P" System Model *HPC-DS-33-P* shall be a 2" deflection, fully adjustable and fully assembled Plenum Curb System. The completely isolated top and bottom steel structural frames shall have a continuous flexible weatherseal. The system shall be capable of serving as a blocking device during installation. The springs shall have built-in limit stops to snub out wind resistance. Model *HSPC-DS-33-P* incorporates seismic construction. The HUSH CURB™ shall be 24" high and shipped completely assembled. Factory curbs with a secondary vibration rail kit are not acceptable.

The HUSH CURB™ shall have a model *DS-33* panelized acoustical floor sound package for radiated noise. Materials shall meet Class "A" per ASTM E84 for flammability. The *DS-33* Acoustical Panelized Floor shall have transmission loss ratings as listed below in accordance with ASTM-E-90-10. A letter of certification shall be issued by the acoustical system supplier stating the complete system has been properly installed prior to setting the units. Products and systems shall be by BRD Noise and Vibration Control, Inc., Wind Gap, PA - (610) 863-6300, www.HUSHCORE.net

PERFORMANCE

To assure optimized aerodynamic and acoustic performance as well as proper integration and coordination of the final installation, the HUSHCORE™ System shall be supplied by the rooftop unit manufacturer as part of a turnkey package. The HUSH CURB™ shall provide minimum 85% vibration isolation efficiency. HUSHCORE™ Model *HPC-DS-33-P* Plenum Style Acoustical/Vibration Curbs shall be tested in accordance with procedure ASTM E-90-10. The assembly shall be rated at not less than STC-33 with 1/3 octave performance values as listed below for sound radiation through the deck inside the curb.

HUSHCORE™ Panelized Acoustical Floor - (Transmission Loss) in accordance with ASTM E-90-10																						
Freq. (Hz)	80	100	125	160	200	250	315	400	500	630	800	1K	1.25K	1.6K	2K	2.5K	3.15K	4K	5K	6.3K	8K	STC
Transmission Loss (dB)	23	22	18	19	18	19	23	26	30	37	43	48	51	52	52	52	53	56	55	57	58	33