



January 11, 2021

Dear Business Leader:

We are contacting you as a highly-regarded and trusted provider that serves Sherburne County lake associations and their property owner members to seek your support in expanding our efforts as lake and waterway stewards.

SC COLA's vision statement is: "**Protecting our lakes, rivers and waterways today and tomorrow.**" Its primary mission is to enhance the work of our member lake associations in their efforts to preserve fish and wildlife habitats; the economic, recreational and natural environmental values of our shorelands and waters; and promote their safe and responsible use. (Please see reverse side for a listing of SC COLA organization members.)

Examples of actions that have already enhanced the work of members are:

- Aquatic Invasive Species (AIS) Monitoring Rake Kits sponsored by SWCD and SC COLA that provided detection devices and materials for ongoing protection throughout the boating season of each lake (at no cost).
- The development and release of the <https://sherburnecola.org/> website with considerable savings obtained from group licensing of its platform.
- The e-distribution of our "Lake Directory & Reference" of lake representative, service provider and government contacts.

Here is a list of planned activities for the upcoming year:

- Our AIS Early Detection Rapid Response Task Force is developing a universal action plan and pursuing agreements on the roles and responsibilities for local government and lake associations, so that we will be prepared for if / when new AIS challenges occur.
- Help implement the Adopt-a-Stormdrain project for Sherburne County and pursue County septic ordinance and education improvements.
- Build on our Business Sponsor Campaign to be able to afford goals like grant collaboration with Sherburne SWCD targeting reduction of water quality impairments and soil erosion, youth water quality project partnerships and additional waters-related advocacy memberships.

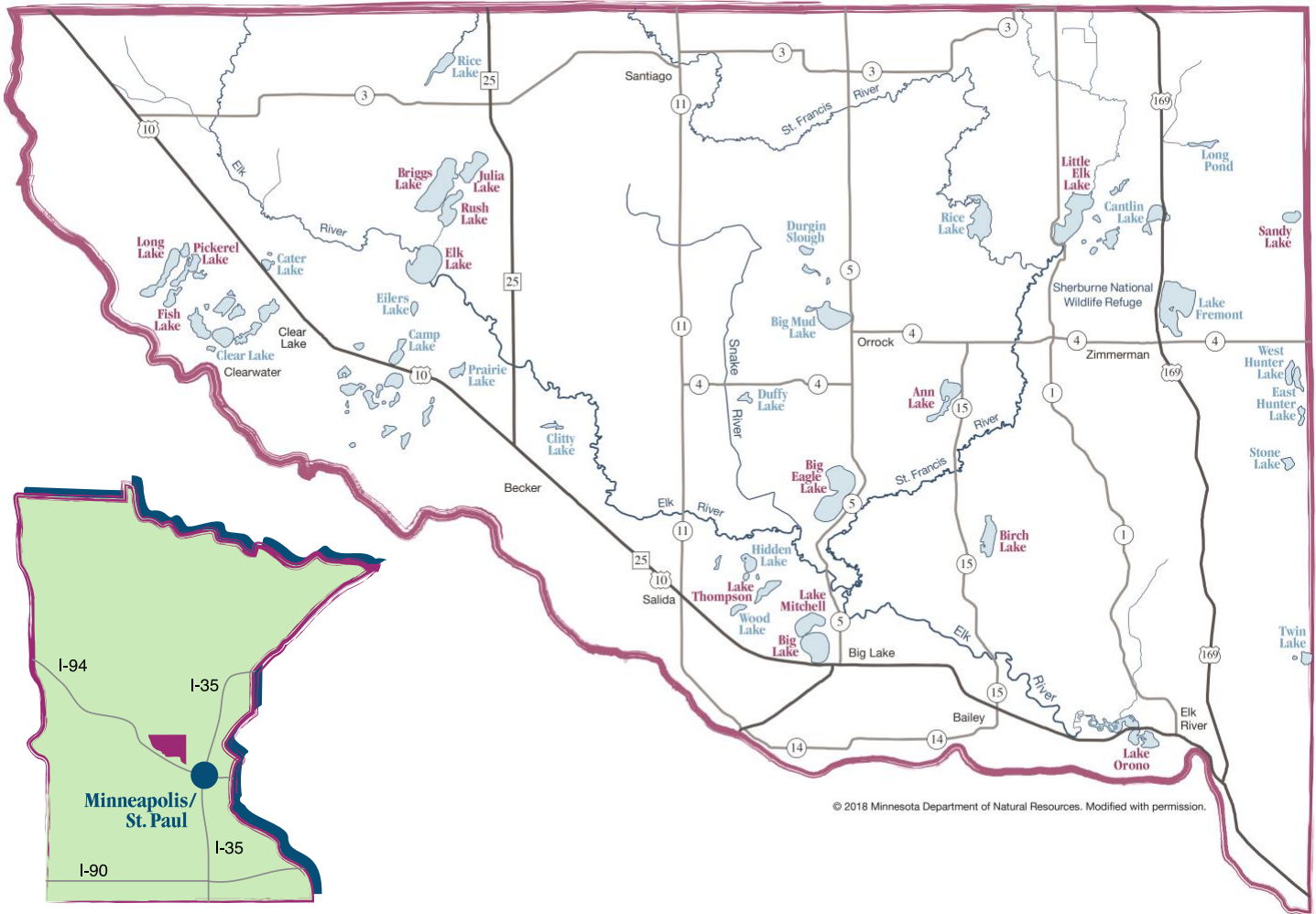
Enclosed you will find the 2020 SC COLA Business Sponsorship Form, which outlines the benefits associated with each of the business sponsor levels. Please complete the sponsor form and submit it with your dues **no later than March 26, 2021** to be highlighted on our website and directory.

Sincerely,

Patrick Plant, *Chair*

SC COLA

sherburnecola@gmail.com



© 2018 Minnesota Department of Natural Resources. Modified with permission.

The SC COLA consists of representatives from:

- Ann Lake Improvement Association
- Big Eagle Lake Improvement Association
- Big Lake Community Lakes Association
- Birch Lake Association
- Briggs Chain of Lakes Association
- Little Elk Lake Association
- Orono Lake Improvement District
- Sandy Lake Association
- Sherburne County Soil and Water Conservation District
- Thompson Lake Association