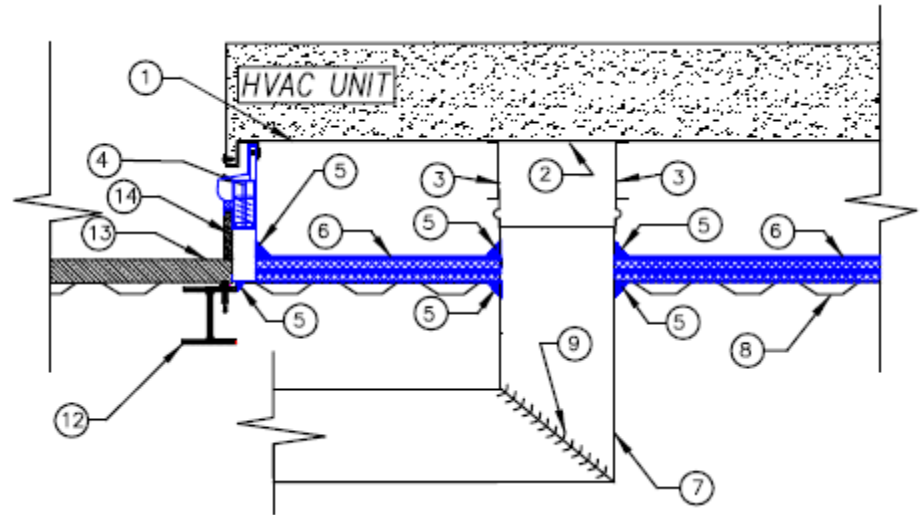


Specifications

- Design specs preferred over performance specs
- Evaluate objective and subjective criteria
- Place in Division 15/23 with equipment
- Specify single source
- Specify turnkey where installation critical
- Include provisions for supplier inspections where performance critical
- Outline appropriate installation guidelines/detail where performance critical
- Address equipment compatibility and tolerance for operational impact



BY RTU UNIT MANUFACTURER

1. RTU Base
2. SA/RA Unit Openings

BY ACOUSTICAL MANUFACTURER

3. Integral Curb Duct Supports
4. 2" Deflection Fully Assembled HUSH CURB™
5. HUSH SEALANT™ Acoustical Caulk at all Duct Drops & Curb Perimeter
6. HUSHCORE™ DS-52 Deck System In-Curb Acoustical Treatment

BY HVAC CONTRACTOR

7. Ductwork
8. Roof Deck flashed to within ¼" of all Duct Drops
9. Turning Vane
10. Fan Sound attenuation per schedule/specifications
11. Submit Letter of Certification from Acoustical Supplier

BY GENERAL CONTRACTOR

12. Building Steel
13. Built-Up Roof or Concrete
14. Insulation and Cant Strip
15. Curb Slope requirements where applicable