

Stock Assessment and 2016 Forecast

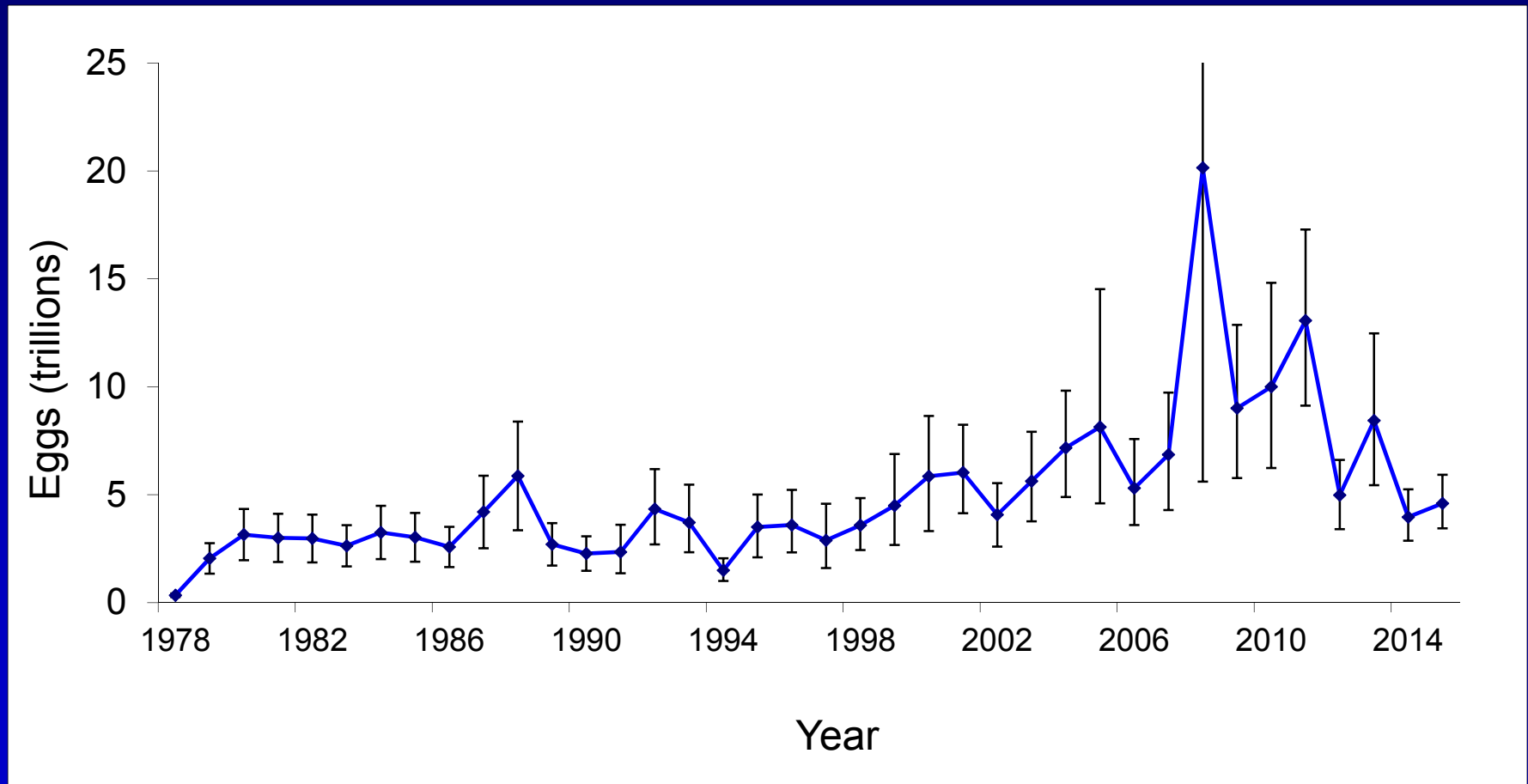
Sitka Sound, Alaska



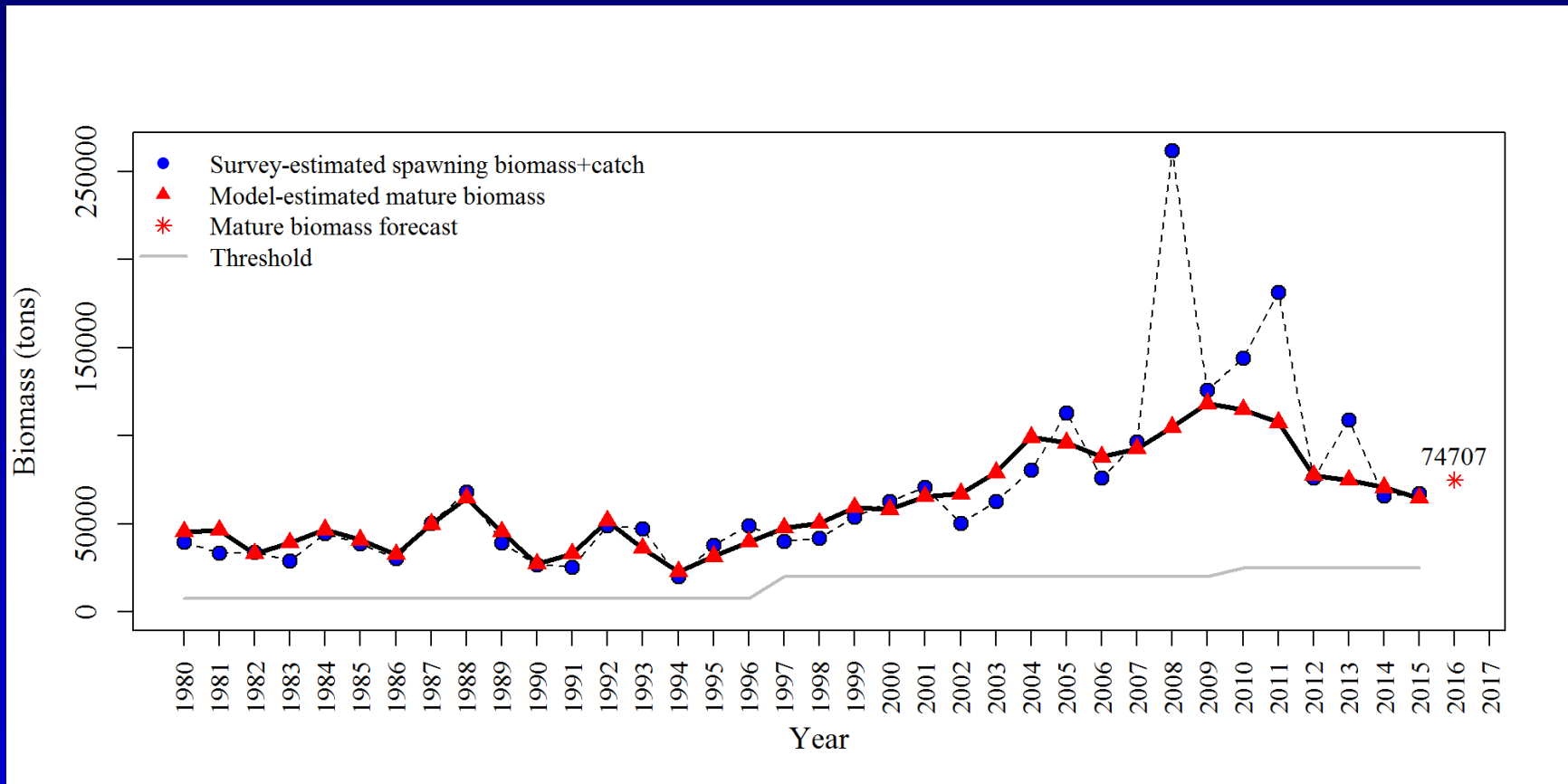
Sherri Dressel
Alaska Department of
Fish and Game

March 1, 2016
Sitka, Alaska

Spawn deposition survey estimates with 95% confidence intervals

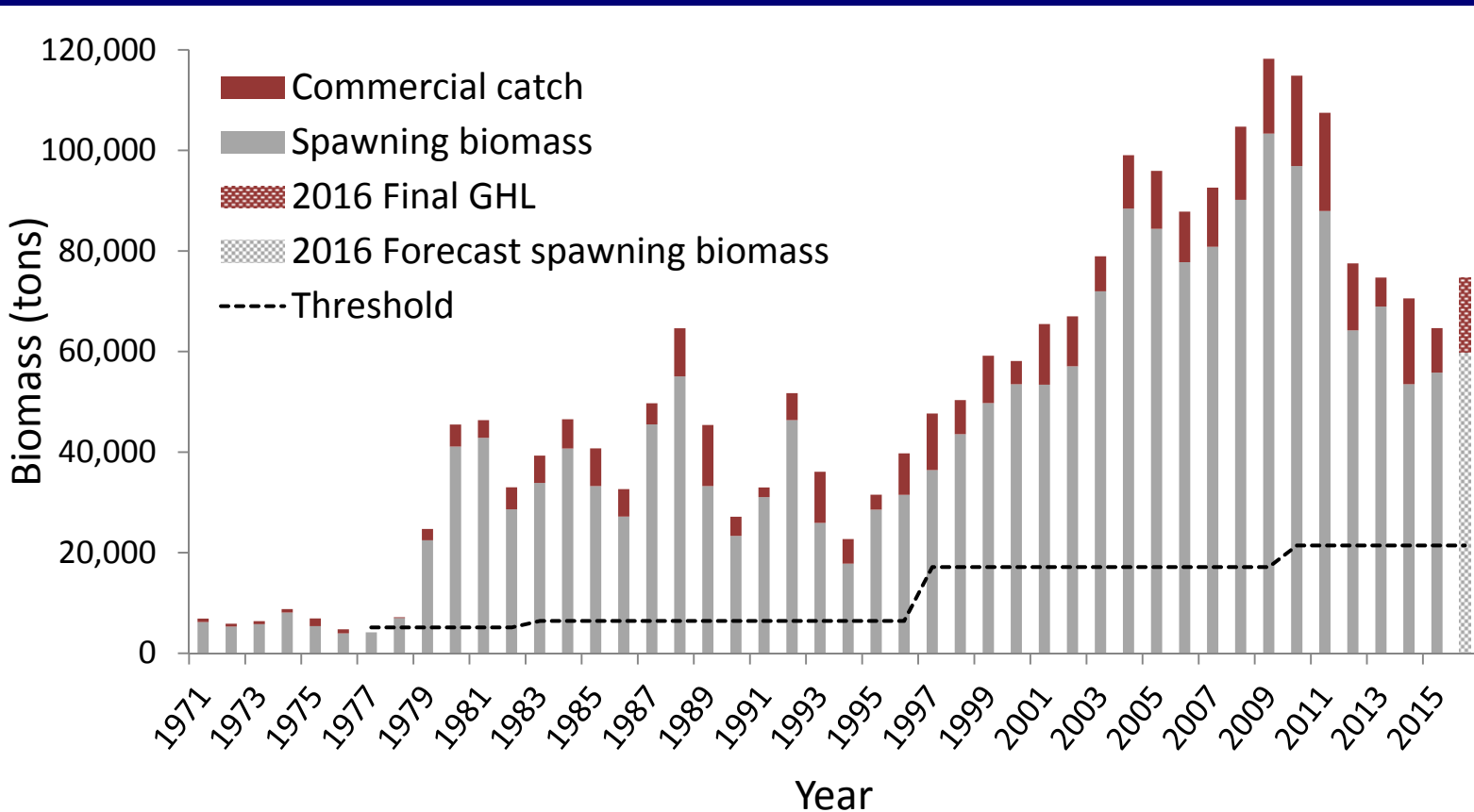


Sitka Sound mature biomass and final forecast



Sitka Sound spawning biomass and harvest

(2016 is forecasted biomass and final GHL)

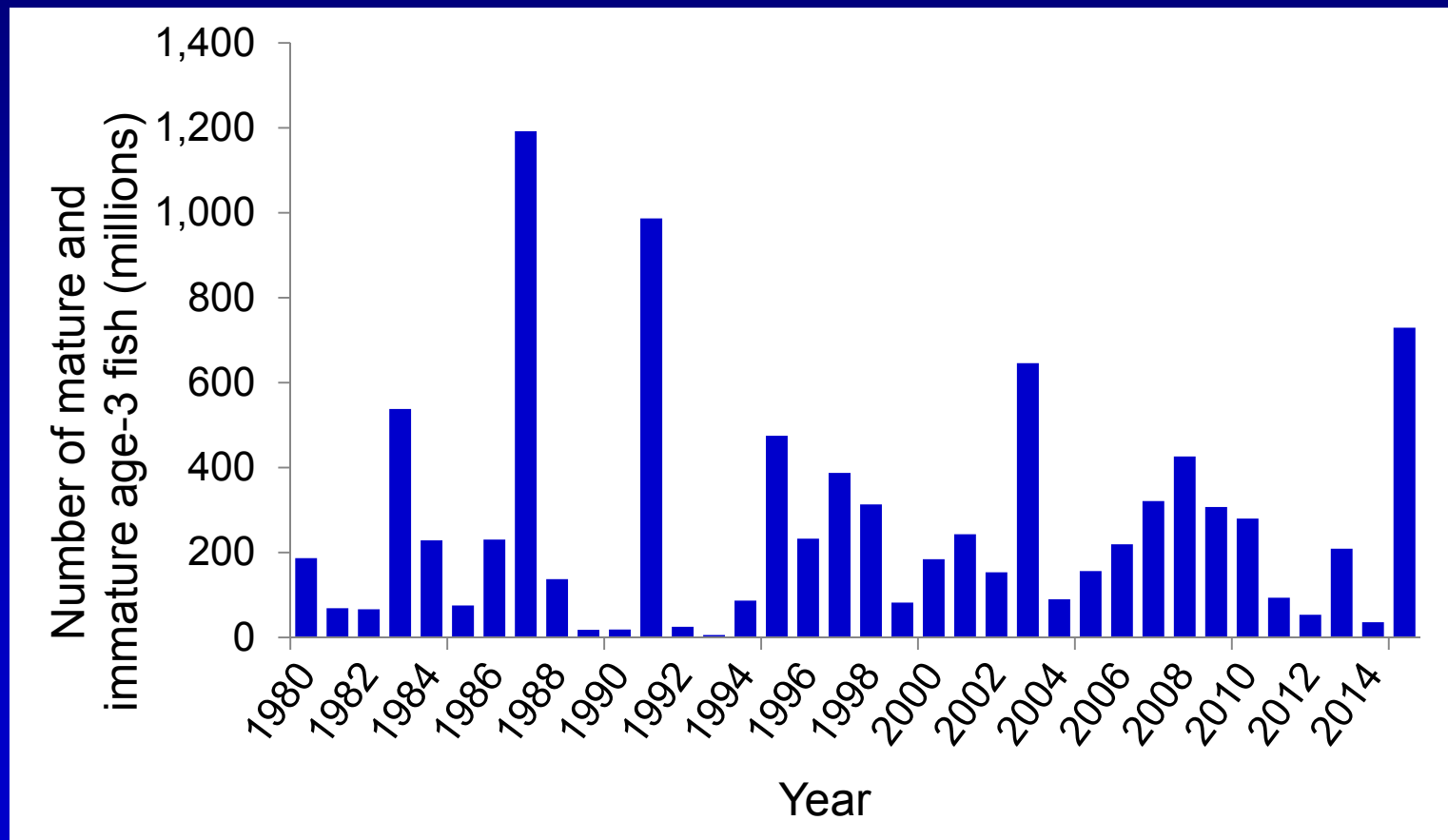


* 1971-1979 biomass estimates from 2007-forecast ASA model, 1980-2016 biomass estimates/forecast from 2016-forecast ASA

Sitka Sound recruitment

2016 forecast ASA model

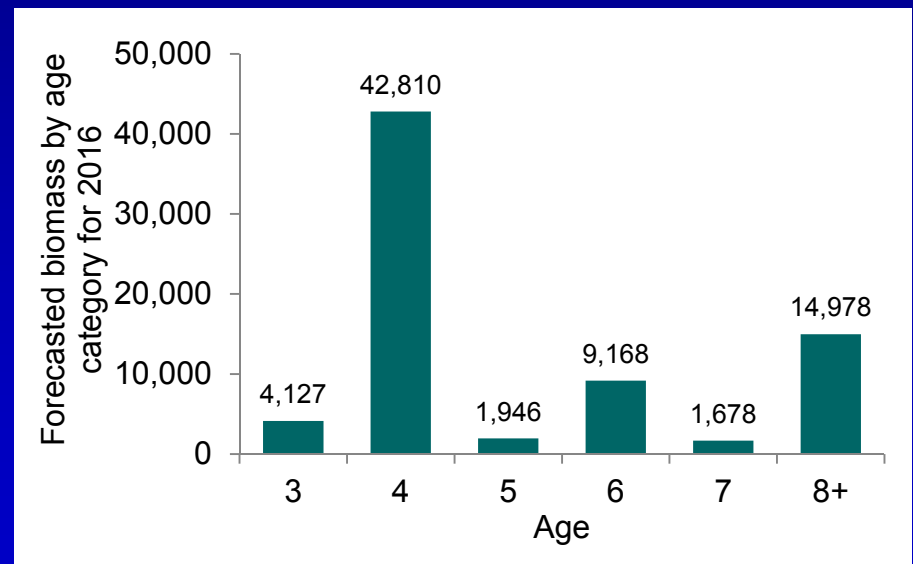
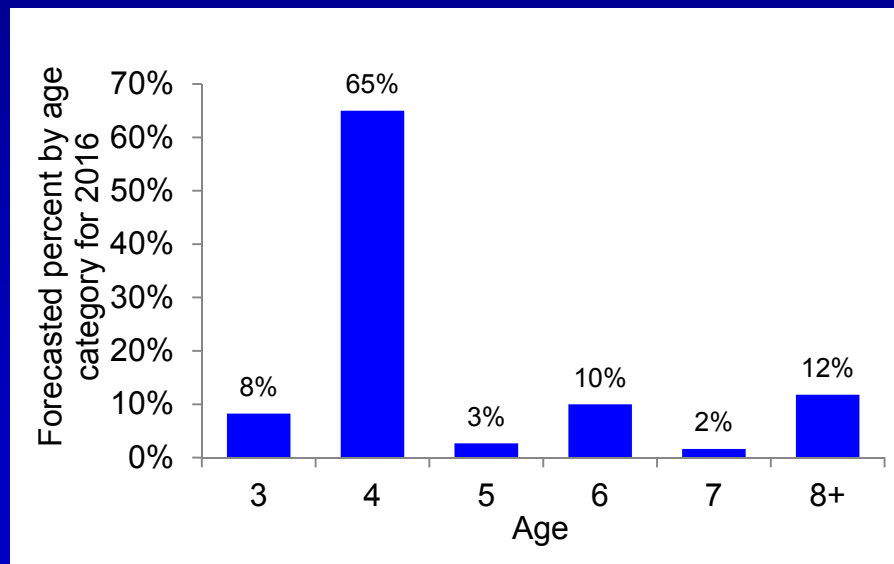
(mature and immature age-3 fish)



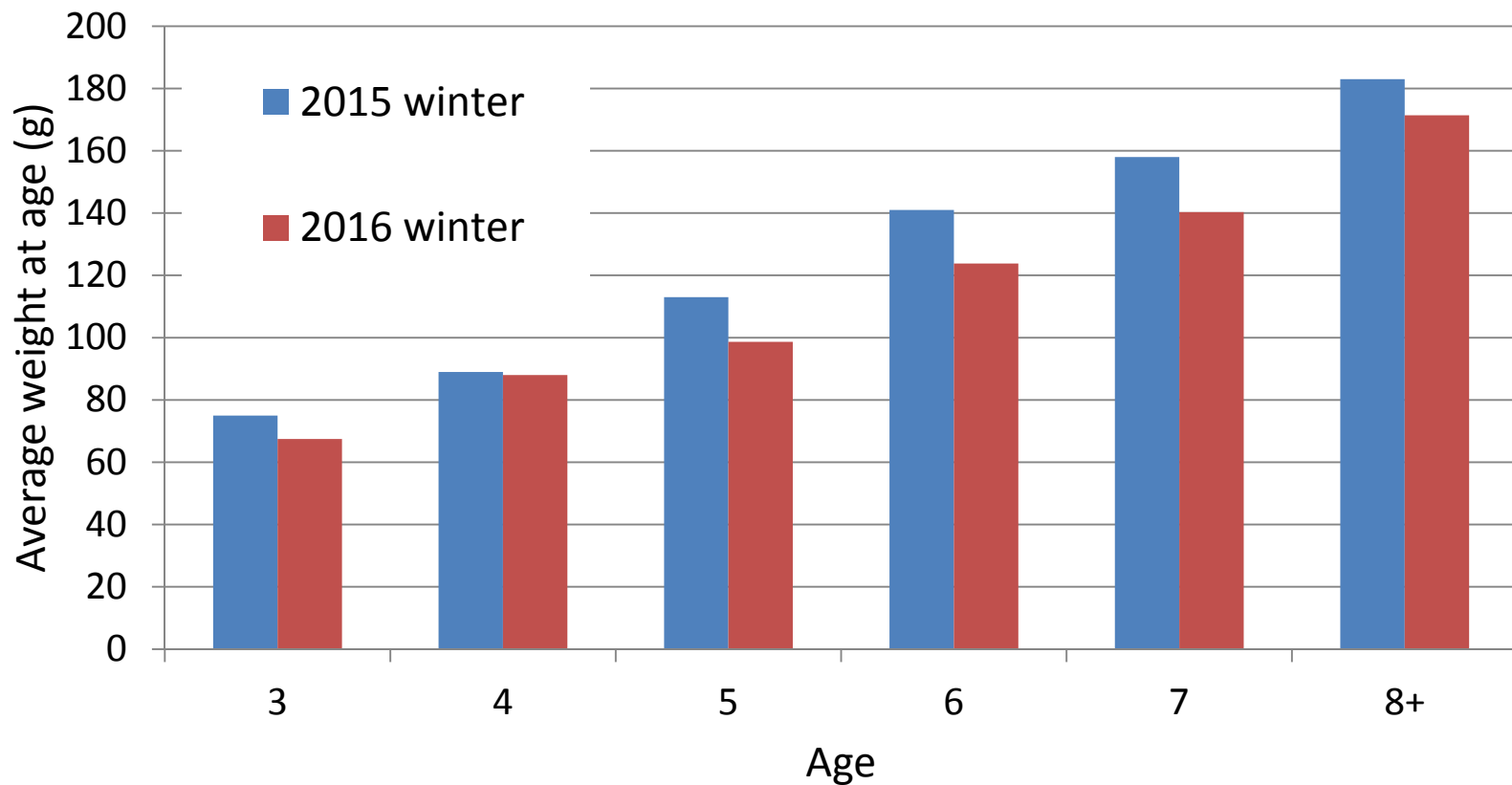
2016 final forecast

Final GHL = 14,941 tons

Average forecasted weight = 101 grams



Comparison of 2015 and 2016 winter average weights at age



Over- and under-estimation of spring average weight at age (g)

Year	Age class					
	3	4	5	6	7	8+
1992	-69	-6	-7	-20	1	-12
1993	1	7	4	2	-24	5
1994	-6	-4	-6	-2	-1	0
1995	-22	-13	-17	-28	-15	-37
1996	1	5	10	2	2	10
1997	-1	3	4	7	-13	1
1998	-17	-15	-7	2	4	-8
SAMPLES NOT AGED						
2011	-5	-17	-18	-21	-38	22
2012	1	0	2	2	0	-2
2013	-10	-7	-24	-24	-20	13
2014	-16	-22	-42	-43	-20	-16
2015	-5	-16	-16	-16	-12	-15