

# TEAM SHEVLIN



**Michael H. Shevlin**  
 Broker/Realtor®  
 239-851-1727  
 mikeshevy@aol.com

**Carlyn Herring**  
 Realtor®  
 239-850-9613

**Tonya Player,**  
 Team Assistant  
 239-282-5604

carlynherring@hotmail.com tonya@teamshevlin.com

## 10191 STRINGFELLOW



Beautiful Commercial building on Pine Island. The Century 21 Plaza is totally rented. Three offices, central location, almost 1 acre of property. Great investment.  
**\$650,000**

## 4401 POINT HOUSE



North Captiva Signature Restaurant and land. 250' Canal Frontage with dock for 38 boats!  
**\$2,700,000**

## 7702 BOCILLA



HARBOR FRONTAGE! The Beachouse Lodge has 5 units, including third floor penthouse, 3-one bedroom suites, and 1 efficiency. The Beachouse Lodge is located directly on Charlotte Harbor and has a private swimming beach area and 260 ft fishing pier.  
**\$1,650,000**

## 4547 Pine Island

Waterfront Commercial zoned C-1. 3 unit waterfront CBS Commercial building in the HEART of Historic Matlacha. Fully rented with The US Post office, being the marquee anchor. Your chance to own a profitable Matlacha Waterfront Commercial Building. **\$750,000**

## 2810 & 2850 Pine Island Rd

2 great side-by-side parcels located near the corner of Pine Island Rd and Veteran's Pkwy next door to the Coralina Apt. complex. 18 acres **\$3,400,00** & 4.55 acres **\$830,000**

## BOKEELIA GROVES



17 acres  
**\$611,150**



5 acre Mango Grove  
**\$200,000**

# COMMERCIAL LISTINGS



## 5031 Pine Island Rd

This "Gateway to Pine Island" property is the perfect place for your business.  
**\$240,000**



## 5301 Doug Taylor Circle

Waterfront Industrial lot zoned IG in the Pine Island Industrial Park.  
**\$74,900**



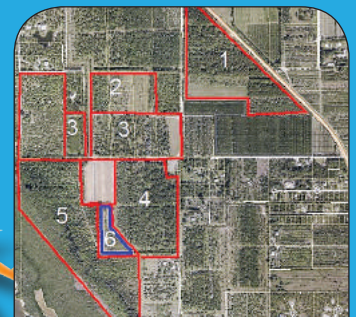
## 16870 SILVER TARPON

14 units on 2.6 acres with bay frontage and 2 canals and exclusive access point to Charlotte Harbor. Great opportunity!  
**\$2,999,000**



## FANTASTIC COMMERCIAL OPPORTUNITY

1 Acre commercial site located at the Winn Dixie Shopping Center.  
 Only **\$118,900!!**



## PINELAND GROVES

- #1 - 37.6 acres \$1,316,000
- #2 13.65 acres \$408,135
- #3 - 23 acres \$681,272
- #4 - 31.58 acres \$947,400
- #5 - 50 acres \$1,100,000
- #6 - water retention area

# ISLAND GROVES