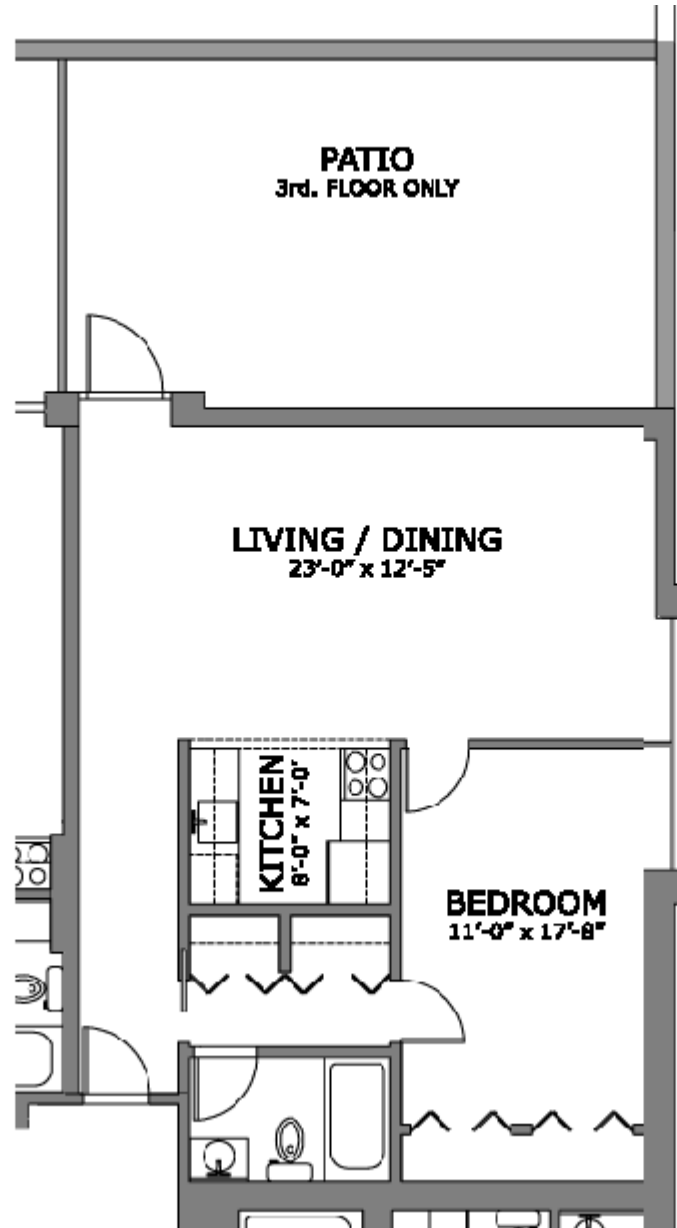




Merrillwood Building

Residential Living

Merrillwood Building, 225 Merrill Street, Birmingham, MI 48009, Office: (248) 646-7500, Fax: (248) 646-7599 www.Merrillwood.com



313 745 sqft
413
513
613

Plans and specification subject to change without notice.

http://www.merrillwood.com/files/1_1_313_413_513_613_MW/.pdf