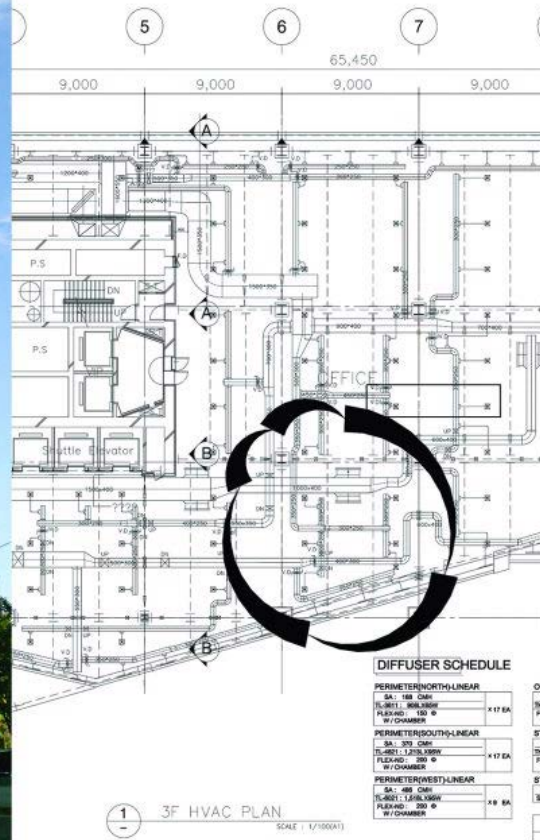




# SK TELECOM (에스케이텔레콤주식회사)



## PROJECT NAME

SK Telecom (에스케이텔레콤주식회사)

## CLIENT

SK Telecom

## LOCATION

Seoul, South Korea

## MARKET SECTOR

Office

Skyscraper

## BUILDING SIZE

91,830 m<sup>2</sup>

## PROJECT COMPLETION

2005

## CONSTRUCTION TYPE

New Construction

## THERMA-FUSER SYSTEM CONFIGURATION

Option 1: Therma-Fuser Stand Alone  
Diffusers

ACUTHERM MANUFACTURER'S REP  
Youone Engineering, Co. Ltd

Learn more about this project at  
[acutherm.com](http://acutherm.com)



---

## PROJECT DESCRIPTION

SK Telecom is a global company specializing in wireless telecommunication services and focusing on the commercial development and provision of high-speed wireless data and internet services.

Located in the center of old town Seoul, this modern building is 33 stories tall with all glass cladding and Therma-Fuser™ systems utilized throughout.