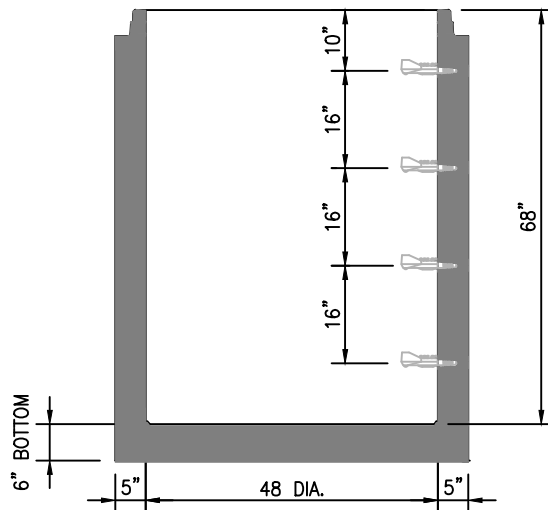
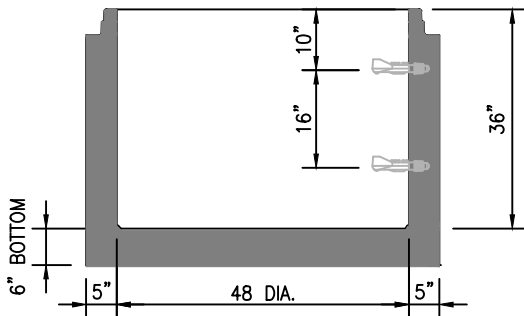
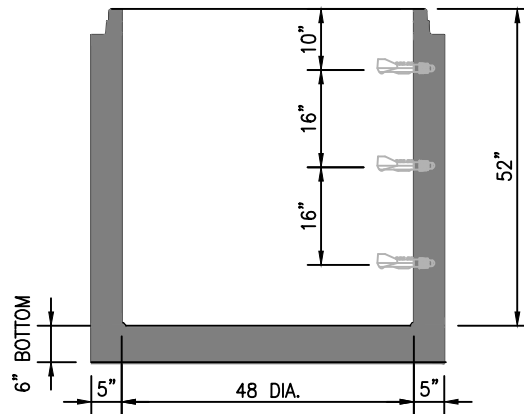
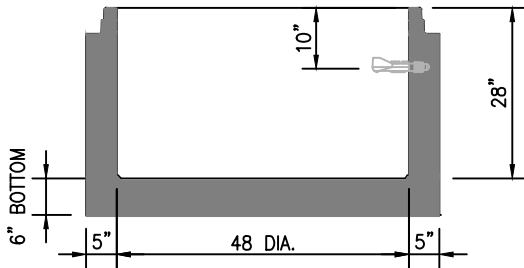


BASE WEIGHTS

- 28" = 3,264 lbs.
- 36" = 3,842 lbs.
- 52" = 4,998 lbs.
- 68" = 6,154 lbs.



\*\*\* CUSTOM PRODUCT SIZES ARE AVAILABLE UPON REQUEST.  
PLEASE CALL (865) 458-3998 FOR A TECHNICAL SERVICE REPRESENTATIVE.

GENERAL NOTES:

1. ALL MATERIAL, DESIGN, MANUFACTURE, PHYSICAL TEST REQUIREMENTS, FINISH MARKING, INSPECTION, REJECTION AND REPAIRS TO MEET "SPECIFICATIONS FOR PRECAST - REINFORCED CONCRETE MANHOLE SECTIONS". PER ASTM C-478 (LATEST VERSION)
2. CONCRETE STRENGTH:  $f'_c$  @ 28 Days = 5,000 psi
3. VERTICAL MANHOLE STEPS SHALL BE CONSISTENTLY SPACED AND SHALL COMPLY WITH OSHA (SUBPART D) "FIXED LADDERS" (SECTION 1920-27\_ AND /OR ASTM C-478



**NPCC**

CERTIFIED PLANT

**VANHOSECO PRECAST, LLC**

244 BLAIR BEND DRIVE  
LOUDON, TN 37774  
Tel: (865) 458-3998



48" I.D. - PRECAST CONCRETE  
BASE SECTIONS

SCALE: 3/8" = 1'-0"

B1

VANHOSECO