

1 COLUMBIA PLACE

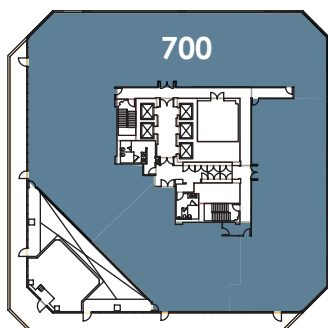
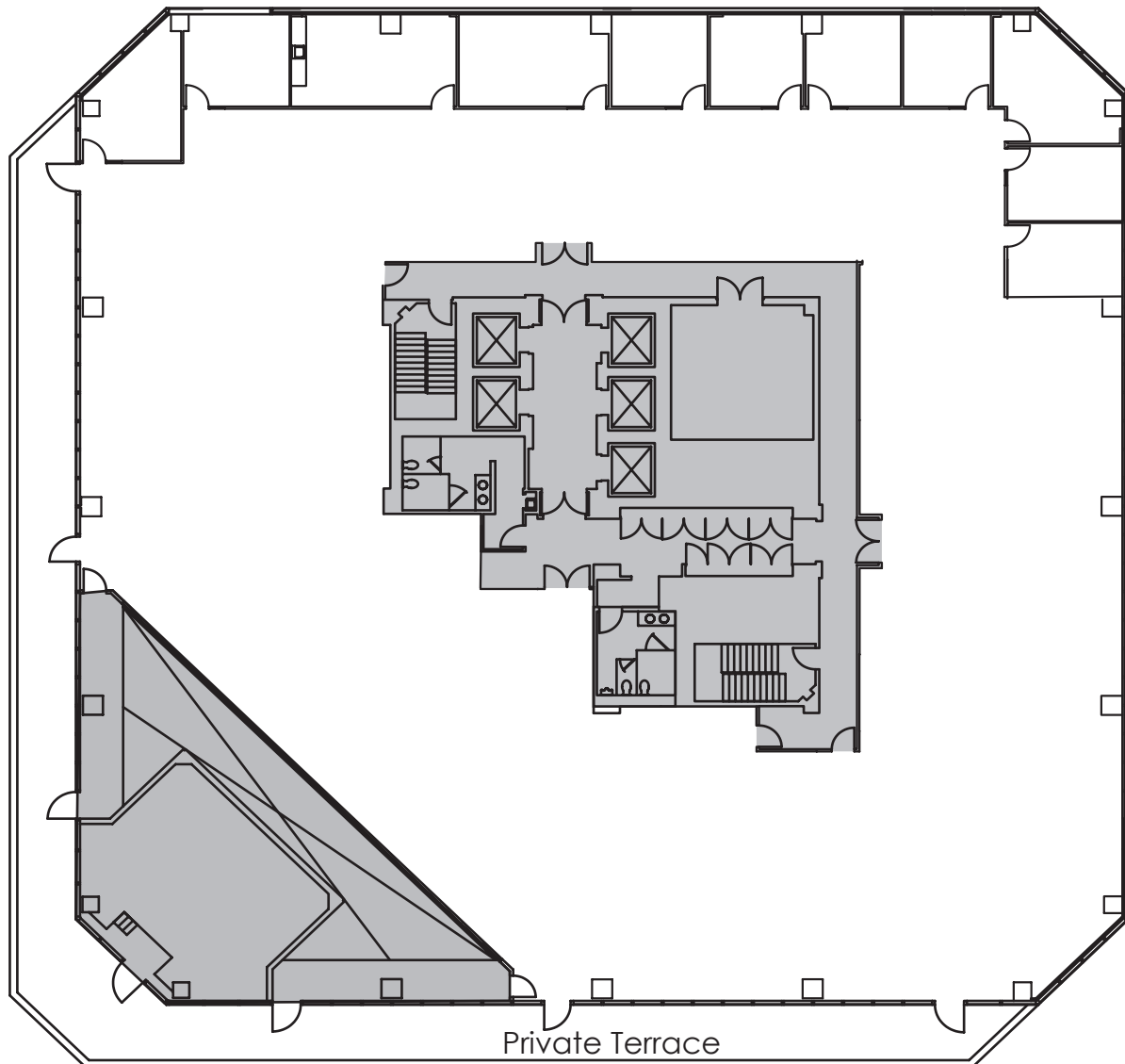
401 WEST A STREET SAN DIEGO CA 92101

LANDMARK DOWNTOWN

CLASS A OFFICE BUILDING

27 STORIES TOTALING 556,750 SF

SUITES 700



SUITE	700
RSF	20,428
VIEW	360°
STATUS	Avail. 5/1/19

*Suites 700 & 800 are contiguous for up to 40,483 RSF



For additional information:

Richard Gonor
858.410.1243
richard.gonor@am.jll.com

Bess Wakeman
858.410.1245
bess.wakeman@am.jll.com

Brandt Riedman
858.410.1247
brandt.riedman@am.jll.com

Owned & professionally managed by:

