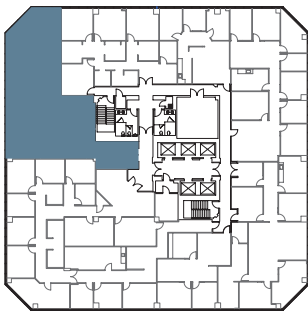
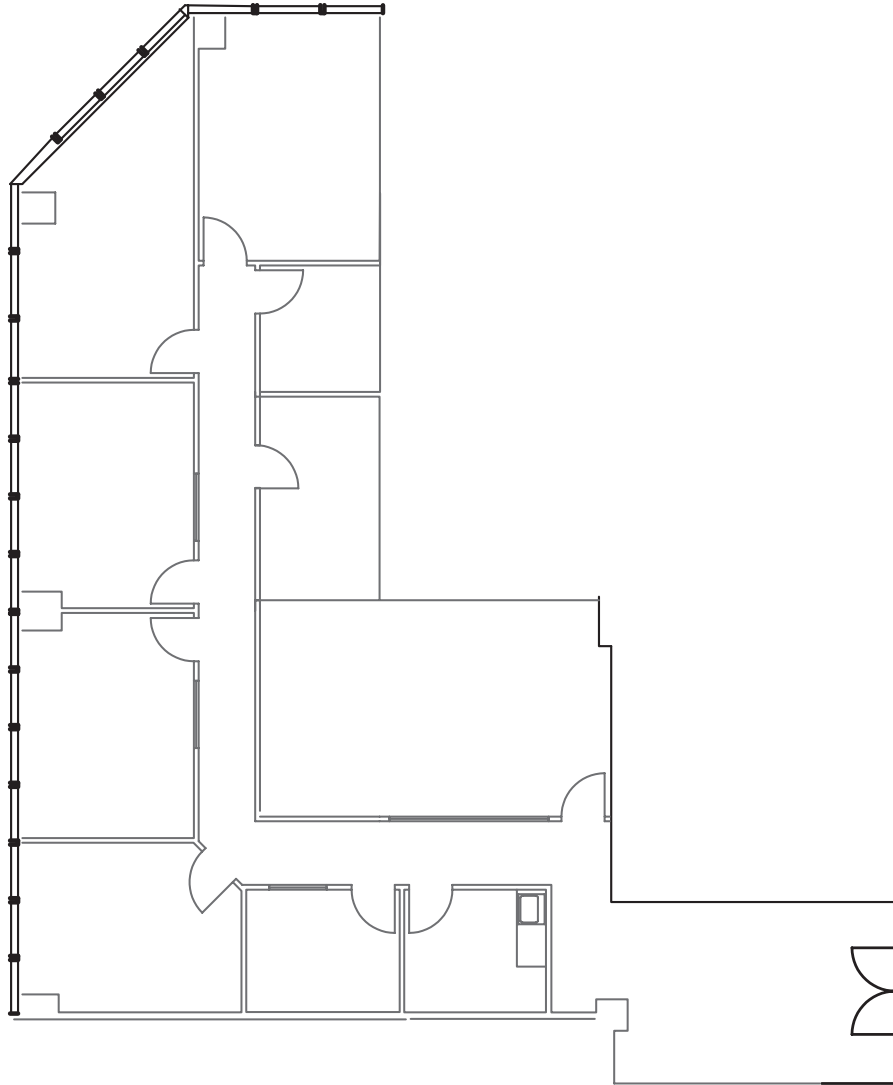


1 COLUMBIA PLACE

SUITES 2200

401 WEST A STREET SAN DIEGO CA 92101
LANDMARK DOWNTOWN
CLASS A OFFICE BUILDING
27 STORIES TOTALING 556,750 SF



SUITE	2200
RSF	2,953
VIEW	Northwest
STATUS	Avail. 4/1/19



For additional information:

Richard Gonor
858.410.1243
richard.gonor@am.jll.com

Bess Wakeman
858.410.1245
bess.wakeman@am.jll.com

Brandt Riedman
858.410.1247
brandt.riedman@am.jll.com

Owned & professionally managed by:

